

Meeting Planner's Guide **GYEONGGI**



GYEONGGI TOURISM
ORGANIZATION

MICE GYEONGGI
ALWAYS FOR U

CONTENTS

	Introduction 004	Gyeonggi Provides Everything you Need for your MICE Event 006	The ease of Access to MICE Destination 008	Unique Attractions, Unique Experience 010
4 Seasons with a Variety of Flowers 012	Gyeonggi MICE Bureau 014	NorthWestern Area 016	KINTEX 018	Ara Marina Convention 022
DMZ Ecotourism Information Center 024	The MVL Hotel Goyang 026	Hotel L'art 028	Hyundai Cruise 030	Onemount 032
Aqua Planet Ilsan 033	Hyundai Motor Studio Goyang 034	Camp Greaves DMZ Experience Center (Youth Hostel) 035	Panmunjeom 035	Aram Nuri 036
Korean Traditional Stone Pot Bibimbap Cultural Experience Hall 036	Hyundai Department Store – KINTEX Branch 037	Paju Premium Outlets, a Shinsegae Simon Center 037	Lotte Premium Outlet - Paju Branch 038	Hyundai Premium Outlet Gimpo 038
Lakins Mall 039	Western Dom 039	NorthEastern Area 040	CheongShim Peace World Center 042	Good Morning HRD Center 046
Island Castle Hotel&Resort 048	Hanwha Resorts Sanjeong Lake Annecy 050	Kensington Resort 052	W Jiwoo Resort 054	Chi-ong Art Center 056
Herb Island 058	Petite France 059	The Garden of Morning Calm 060	Pocheon Art Valley 061	Sandulsori Botanical Garden 061
Bears Town Resort 062	Amazing Park 062	Sansawon 063	Namyangju Organic Theme Park 063	Southwestern Area 064
SINTEX 066	Suwon Convention Center 070	Novotel Ambassador Suwon 072	Ramada Plaza Suwon 074	Royal Heritage Hotel 076
Rolling Hills Hotel 078	Shilla Stay Dongtan 080	Ibis Ambassador Suwon 082	Hotel Prumir 084	Hotel Square 086
Landmark Hotel 088	Value Hotel Suwon 090	Hotel Vella Suite 092	Suwon Silkroad Hotel 094	The Koryo Hotel 096

CONTENTS

	Ramada Pyeongtaek Hotel 098	La Vie D'or Resort 100	Gyeonggi-do Youth Center 102	Suwon Hwaseong Fortress 104
Gwangmyeong Cave 105	Seoul Land 106	Woongjin Playdoci 107	Aiins World 108	Bucheon Robo Park 108
Jebudo Island 109	Ansan Reed Marsh Park 109	Samsung Innovation Museum 110	Gyeonggi-Do Suwon Worldcup Stadium Foundation 110	Korea Manhwa Museum 111
Glass Island 111	Uiwang Rail Bike 112	Gyeonggi Arts Center 112	Pyeongtaek Gyodong Ferry Co. Ltd. 113	Suwon Traditional Culture Center 113
Southeastern Area 114	The Bloomvista 116	Daemyung Resort Yangpyeong 120	Chereville Paradise Institute 122	Adela Hanok 124
Courtyard by Marriott Seoul Pangyo 126	The soom Forest 128	Yongin Central CO'OP Hotel 130	Namhangang Sunvalley Hotel 132	Ramada Yongin Hotel 134
Yangji Pine Resort 136	Hanwha Resort Yangpyeong 138	Hanwha Resort Yongin Beseon 140	Konjiam Resort & Ski Course 142	Ocher Village 144
Yangpyeong Forest Pension 146	Sunning Leadership Center 148	Everland Themepark 150	Korean Folk Village 151	Semiwon Garden 152
Hwadamsup 153	Wild Flower Arboretum 154	Gonjiam Ceramic Park 155	Starlight Garden Ooozooo 156	Retro Museum Yangpyeong 156
Yangpyeong Rail Bike 157	Starfield Hanam Sports Monster 157	Yeoju Challenge Adventure 158	Yongin Daejanggeum Park 158	Dumehyanggi 159
Icheon Pig Museum 159	Yangpyeong The Greem 160	Anseong Farmland 160	Sumi Village 161	Chicken University 161
Icheon Lotte Premium Outlet 162	Yeoju Premium Outlets 162	Index 163	Information 168	Map 172

INTRODUCTION



KINTEX

MEET GYEONGGI, NEARER THAN EXPECTED AND LARGER THAN IMAGINED

Gyeonggi, a Global MICE Destination

Offering a New Experience Beyond Meetings

Located in the western central region of the Korean Peninsula, Gyeonggi Province is about 17 times the size of Seoul and 9 times the size of Hong Kong. Along with Seoul, the capital city of the Republic of Korea, Gyeonggi is the economic, historic, and cultural hub of the country. Surrounded by mountains and sea, Gyeonggi is home to living history. There is a wealth of UNESCO World Heritage sites across the province, including Suwon Hwaseong Fortress and Royal Tombs of the Joseon Dynasty, as well as the world's only active strip of division known as the DMZ (Demilitarized Zone).

Gyeonggi has an impressive range of meeting venues set amidst waterways and lush landscapes. Ara Marina on the west coast is a unique waterfront meeting facility, while Adela Hanok, located at the foot of Yongmunsan Mountain, offers a truly special experience.

We invite you to Gyeonggi Province, a perfect place for meeting, sightseeing, and relaxation.

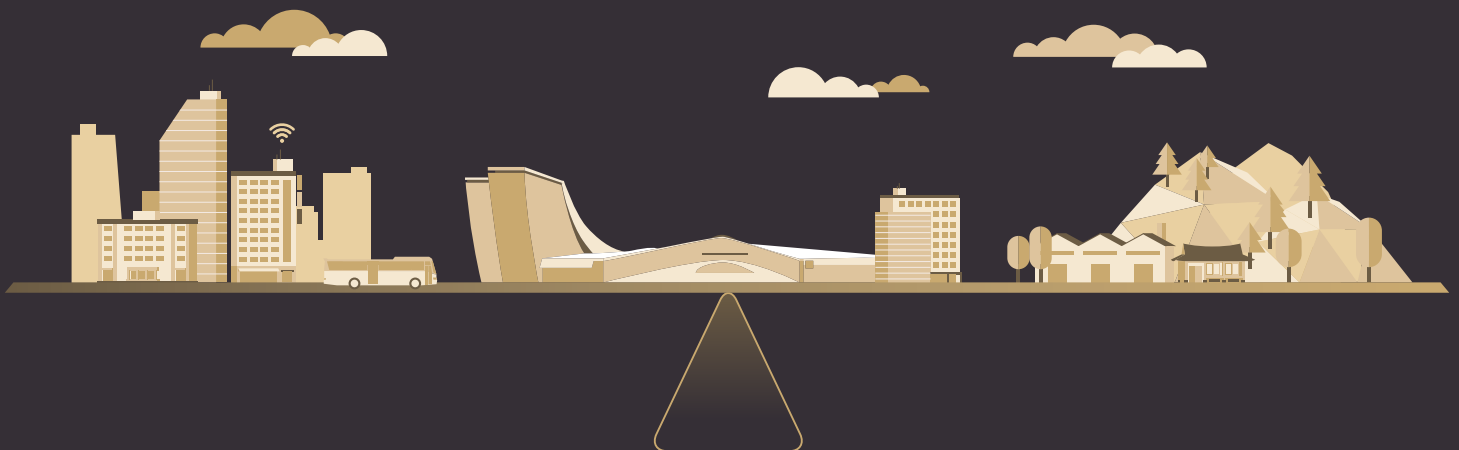
Make Your Next MICE Event a Success in Gyeonggi

Located Close to International Airports and Seoul

Gyeonggi Province is a global MICE destination with convenient transportation, great accessibility to the capital area, and a multitude of engaging tourist attractions. Incheon and Gimpo international airports, Seoul, and the major cities and attractions in the province can all be reached within an hour's drive, allowing efficient meetings and leisurely sightseeing.

Gyeonggi possesses KINTEX, the largest convention center in Korea, and a wide range of unique venues. Moreover, it is a one-stop destination for site inspection, historical and cultural exploration, and leisure activities. Discover the charm of Gyeonggi Province through MICE travel and stock up on refreshing experiences and new energy!

Gyeonggi Provides Everything you Need for your MICE Event



Gyeonggi, it's your MICE destination for your successful business and experience in Korea

Gyeonggi Province has diverse tourist attractions and MICE venues optimized for meetings, including KINTEX in Goyang and SINTEX in Hwaseong, successfully catering to large-scale international events. The world's only Demilitarized Zone, or DMZ, is a fascinating ecological tourist spot. Meanwhile, Everland, Herb Island, and the west coast, ranking among the world's top five wetlands, are some of the unique venues in the province. You can also check out the latest trends while shopping and visiting locations featured in popular Hallyu dramas. Gyeonggi Province, where tradition and modern times meet, is a MICE destination full of charm and wonder.



KINTEX



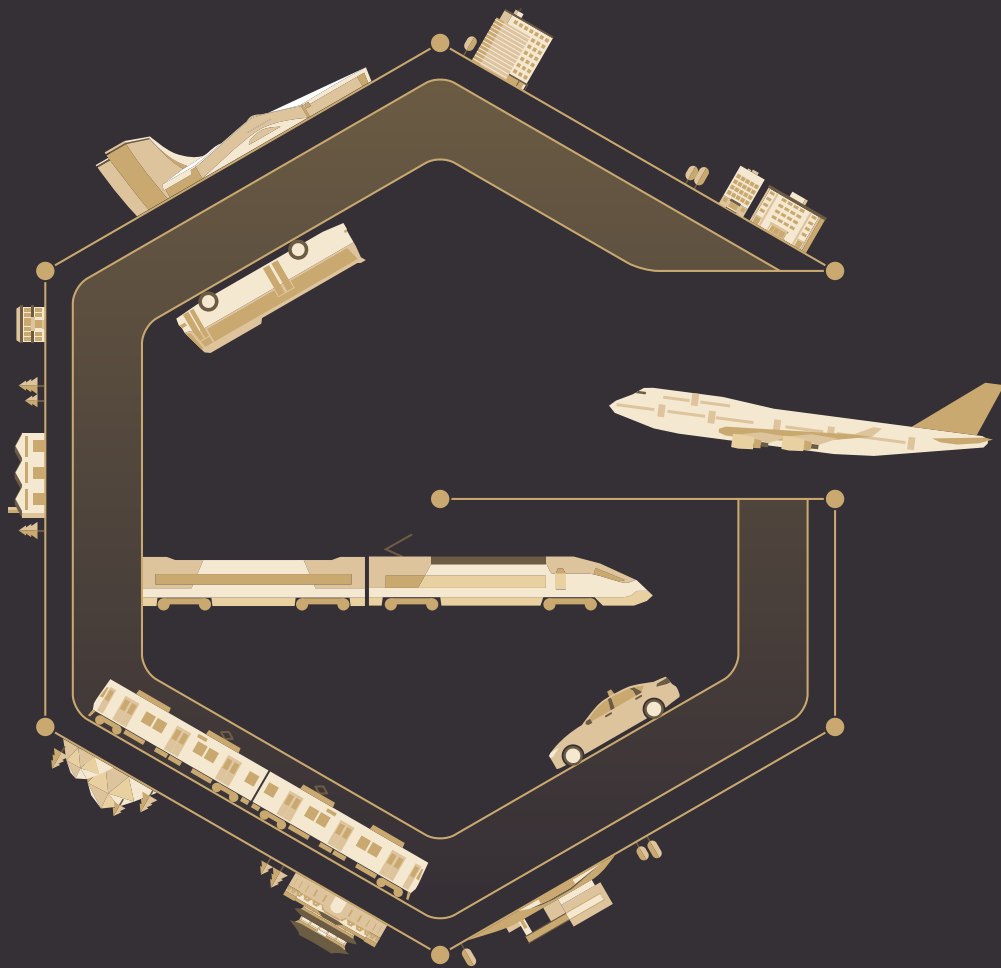
Daemyung Resort

The 2016 Rotary International Convention, held at KINTEX, Goyang, has demonstrated the competence of Gyeonggi Province as a global MICE destination. Over 50,000 Rotarians from 160 countries participated in the convention, making it the largest MICE event to be hosted in Korea. Participants enjoyed a memorable time touring various attractions of Gyeonggi, including the DMZ in Paju, Suwon Hwaseong Fortress, and Petite France in Gapyeong.



The Garden of Morning Calm

The ease of Access to MICE Destination

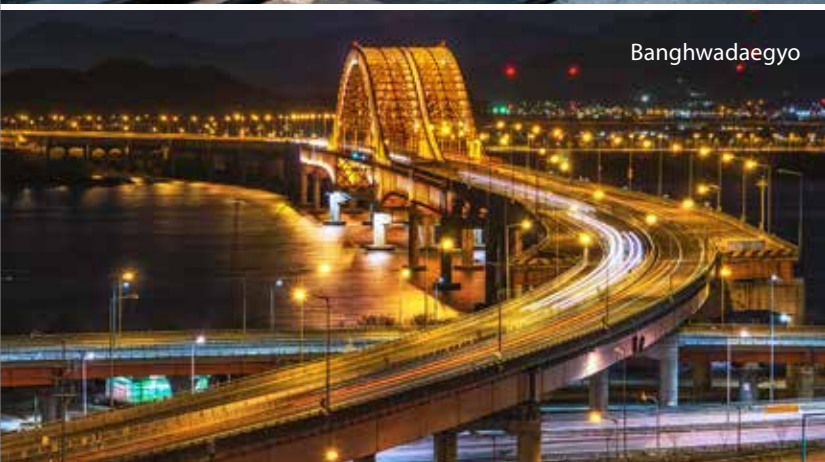


Just 40 minutes from Incheon Airport to KINTEX

Gyeonggi Province is an optimal MICE destination, courtesy of its proximity to Gimpo and Incheon international airports, easy access to Seoul, and advanced transportation infrastructure. KINTEX, the largest congress and exhibition venue in Korea, can be reached in just 20 minutes from Gimpo Airport and 40 minutes from Incheon International Airport. In addition, Seoul and most of the major cities in Gyeonggi are located within an hour's drive. Gyeonggi, a transportation hub blessed with splendid natural environment, fulfills business needs, where time management is essential. A variety of culture and tour programs are also available to add to the enjoyment.



KTX



Banghwa-daeygyo

Travelers can take advantage of the City Airport Terminals at Seoul Station, Samseong Station, and Gwangmyeong Station (opened in 2017). Departure procedures take just around 10 minutes, after which they can take the train (AREX) or limousine bus to the airport and proceed directly to the security check using the designated entrance. These services save time, allowing travelers to enjoy last-minute shopping at duty free.



Incheon International Airport

Unique Attractions, Unique Experience

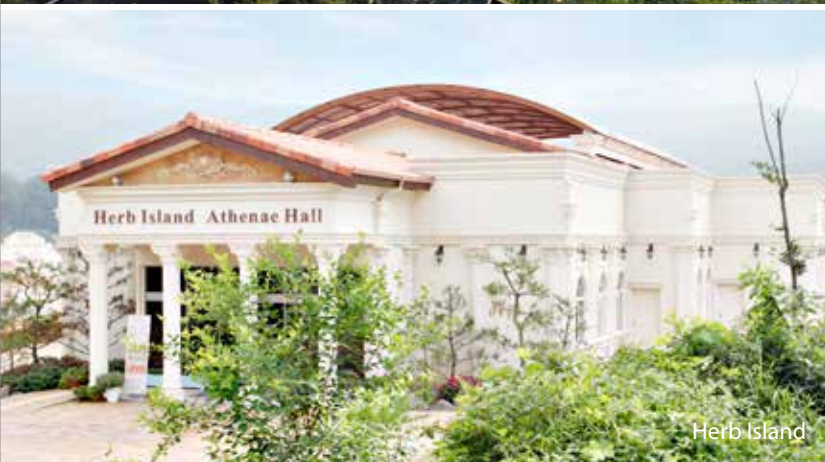


Unique Venues Embodying Distinct Culture and Sentiments of Gyeonggi

An array of unique venues in Gyeonggi are recently getting the limelight. Adding recreation, tourism and distinct cultural elements to convention, these places offer great satisfaction and special memories to MICE attendees. Visitors can take in the nature and exciting stories presented by the unique venues, where there is harmony of tradition and contemporary. To name a few, Adela Hanok in Yangpyeong is filled with Korean beauty and Onemount Snow Park in Goyang transforms into a wonderful party venue. For those looking for novelty beyond meetings, Gyeonggi Province is a perfect choice.

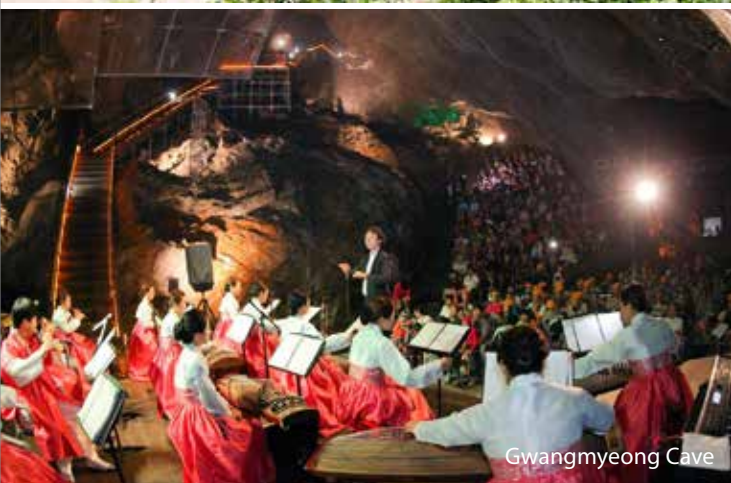


Everland

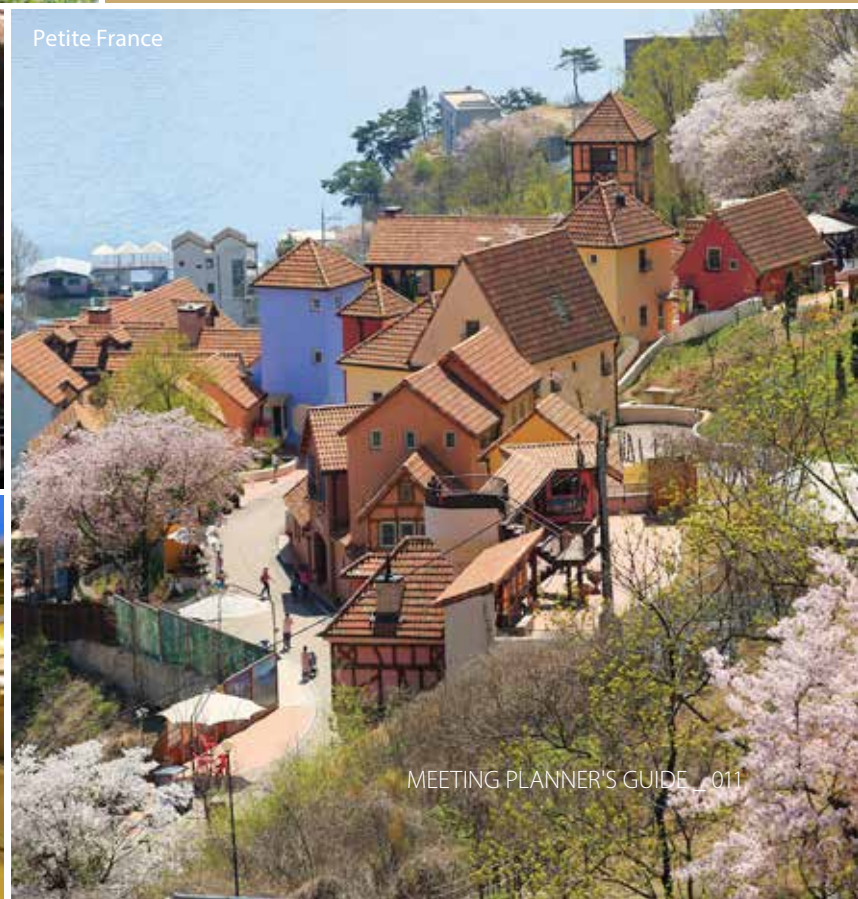


Herb Island

The unique venues in Gyeonggi feature a host of diverse experiences. Exhibitions and performances take place at the culture & arts park, established in what used to be a granite quarry. The cave housing Aqua World provides wine tasting opportunities among other events and concerts. The meeting venue featuring herb therapy is also gaining popularity. The vast range of experiences available at the unique venues of Gyeonggi are beyond imagination.



Gwangmyeong Cave



Petite France



Paju Premium Outlets, a Shinsegae Simon Center

4 Seasons with a Variety of Flowers



Year-round Flowers and Festivals in Gyeonggi

Visitors to Gyeonggi Province can see flowers all year round at places like mountains, lakes, parks, and theme parks. In the spring, tulips and snow-white cherry blossoms create picturesque scenery at Everland in Yongin. The cherry blossom path at Namhansanseong Fortress is also a scenic spring destination. In the summer, lotus flowers and water lilies are in full bloom at Semiwon and Dumulmeori in Yangpyeong. The Garden of Morning Calm in Gapyeong is well-known for autumn foliage and chrysanthemum of Chungnyeongsan Mountain. Last but not the least, the fir tree path at Korea National Arboretum in Pocheon provides a dazzling winter scene.



International Horticulture Goyang Korea



Seoul Land

A variety of hands-on events are available to add to the festivities. International Horticulture Goyang Korea, held in spring, allows visitors to experience traditional culture. Seoul Grand Park features fragrant summer roses and spectacular dance parades. Myeongseongsan Mountain offers a pleasant walk around the silver grass festival grounds in the fall. Cheongpyeong Snowflake Festival includes fun activities such as fishing and ice sledding.



Herb Island



Semiwon



Guri Cosmos Festival



Gyeonggi MICE Bureau

ABOUT US

Gyeonggi MICE Bureau was established in August 2011, as part of the Gyeonggi Tourism Organization's efforts to invigorate the province's MICE industry. The bureau's main operations include supporting the bidding and hosting of various business events in Gyeonggi and implementing PR and marketing initiatives.

Gyeonggi Province is the economic center of Korea with the nation's top technology and productivity. The province has diverse culture and tourism resources, including Everland, Korean Folk Village, DMZ, and Suwon Hwaseong Fortress. Moreover, Gyeonggi possesses KINTEX, Korea's largest convention center, along with numerous small to medium-scale MICE facilities across its 31 cities and counties, making the province an optimal destination for hosting events of various sizes and types.

WHAT WE DO



BIDDING AND HOSTING MICE EVENTS

- Finding and attracting MICE and international organizations
- Supporting attraction and opening of MICE
- Support for MICE Hosting and Attraction



PROMOTION AND MARKETING

- International/Domestic MICE event promotion
- Participation in MICE fairs and events
- Destination Marketing for MICE



RESEARCH & DEVELOPMENT

- MICE Alliance operation in Gyeonggi
- Research and DB development
- MICE education program



GYEONGGI-DO MICE ALLIANCE

As the global MICE industry gets increasingly competitive, cooperative network construction has emerged as an essential factor in successful bidding for and hosting of MICE events. Gyeonggi's MICE Alliance is a public-private cooperation force set up by Gyeonggi MICE Bureau in light of such growing importance. The alliance runs an efficient network by bringing together local governments, various facilities, and service providers, as well as conducting joint marketing initiatives in Korea and abroad.



024_DMZ Ecotourism Information Center

Paju

Gimpo

018_KINTEX •

• 026_The MVL Hotel Goyang

Goyang

028_Hotel L'art •

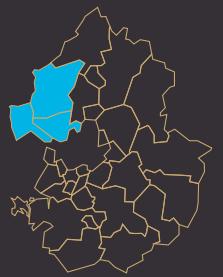
• 022_Ara Marina Convention

• 030_Hyundai Cruise

Seoul

Incheon

NORTH WESTERN AREA



📍 217-60, Kintex-ro, Ilsanseo-gu, Goyang-si, Gyeonggi-do

☎ +82-31-810-8114 📠 +82-31-810-8083

🌐 www.kintex.com 🖱



The Largest Exhibition Center in Korea

As the leading global MICE venue in Gyeonggi, KINTEX (Korea International Exhibition Center) has exhibition space that spans over 100,000m². Since the completion of the second expansion in 2011, KINTEX has successfully hosted large-scale international events such as "GASTECH 2014" and "Rotary International 2016." The center features high-speed wireless Internet access and cutting-edge green exhibition halls. Its third expansion project is currently on the way and with the opening of the GTX express rail service in the near future, it will take just 20 minutes to get to KINTEX from Samseong Station where the Trade Tower is located in Seoul

DIMENSIONS & FACILITIES

Type	Location	Size		Capacity			
		Area(m²)	Ceiling Height(m)	Theater	Classroom	Banquet	
Exhibition Center 1							
Room 204	2F	420	4	360	220	180	
Room 205~213	2F	234	4	200	120	80	
Room 212+213	2F	468	4	400	250	160	
Room 301	3F	225	4	160	100	60	
Room 302	3F	117	4	100	50	50	
Room 303~307	3F	234	4	200	120	80	
Room 306+307	3F	468	4	400	250	160	
Room 308	3F	234	4	Hallow-square type			34
Room 309A	3F	117	4	U type			12
Room 309B	3F	117	4	Hallow-square type			20
Grand Ballroom	3F	1,660	10	1,600	800	960	
Hall 1	1F	10,611	15	600 exhibition booths			
Hall 2	1F	10,173	15	600 exhibition booths			
Hall 3	1F	10,173	15	600 exhibition booths			
Hall 4	1F	10,173	15	600 exhibition booths			
Hall 5	1F	10,611	15	600 exhibition booths			
Exhibition Center 2							
Room 301~304	3F	314	6	250	130	110	
Room 301+302	3F	628	6	520	300	250	
Room 303+304	3F	628	6	520	300	250	
Room 305~308	3F	188	4	80	40	40	
Room 401~404	4F	314	6	250	130	110	
Room 401+402	4F	628	6	520	300	250	
Room 403+404	4F	628	6	520	300	250	
Room 405~408	4F	188	4	80	40	40	
Hall 6	1F	5,580	10	200 exhibition booths			
Hall 7	1F	11,290	12	510 exhibition booths			
Hall 8	1F	11,290	12	510 exhibition booths			
Hall 9	1F	13,238	15	550 exhibition booths			
Hall 10	1F	13,072	15	550 exhibition booths			



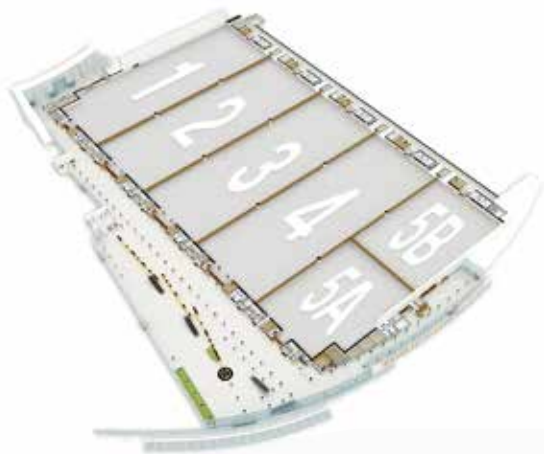
RESTAURANTS & BARS

Name	Location	Cuisine	Capacity
Exhibition Center 1			
Jeonju Danjine	1F	Korean Restaurant	90
Bon Dosirak	1F	Packed lunch / Etc.	64
Starfish	2F	Seafood Buffet	300
Food Court	2F	Popular Korean Dishes	400
Kummiduk Chinayo	2F	Traditional Chinese Food	170
Exhibition Center 2			
Myeongdong Noodles	1F	Noodles/Dumpling	104
Base Camp	1F	Beef Bone Soup Units	92
NARAMYUN NUNGIMBAP	1F	Popular Korean Dishes	78
Lotteria	1F	Fast Food	106
KINTEX WELBEING BUFFET	1F	Buffet	304
Tomato Dosirak	1F	Packed lunch	10
Goga	1F	Japanese pork cutlet, Noodle	92
PizzAzzip	1F	Pizza, Salad	270

KINTEX is equipped with state-of-the-art meeting facilities and provides banquet, catering, and accommodation services. Exhibition Center 1 has the Grand Ballroom, featuring simultaneous interpretation system in 8 languages, and various halls for events, meetings, and exhibitions. Exhibition Center 2 includes the Event Hall, offering simultaneous interpretation in 12 languages and the Main Conference Room, featuring infrared simultaneous interpretation system in major districts.

EXHIBITION CENTER 1

Exhibition Halls 1F



EXHIBITION CENTER 2

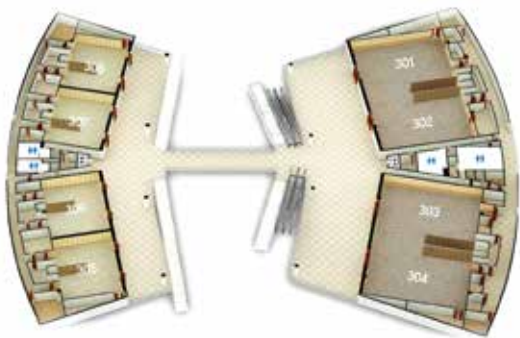
Exhibition Halls 1-2F



Convention Halls 2F



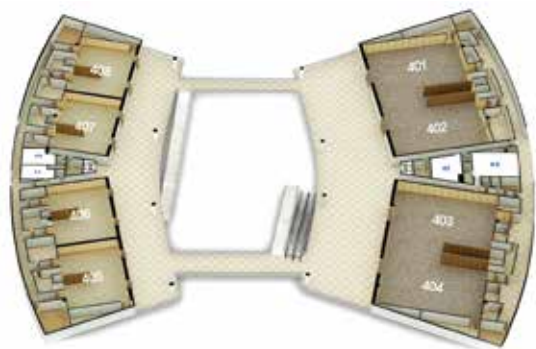
Convention Halls 3F



Convention Halls 3F



Convention Halls 4F



Ara Marina Convention

CAPACITY
800 Participants

📍 73, Arayuk-ro 270beon-gil, Jeonho-ri, Gochon-eup, Gimpo-si, Gyeonggi-do, Republic of Korea

☎ +82-1577-8764 📠 +82-31-984-6730

🌐 www.aramarina.wedding 🖱



Unique Convention Venue for Party on Board with Riverside Views

Located by Gyeongin Ara Waterway in Gimpo, Ara Marina Convention provides a special gathering environment consisting of yacht & marine facilities and exclusive meeting rooms. The convention center, easily accessible from Gimpo and Incheon international airports, is available for events of up to 800 people. Its main facilities include Marina Hall for large-size conventions, Ara Hall for seminars and conferences, and VIP room for private meetings and banquets. The center features state-of-the-art meeting equipment and haute cuisine by ex-hotel chef. Yacht tour program participants can enjoy scenic views of Ara Waterway and the center's rooftop terrace offers an offbeat atmosphere for special events.

DIMENSIONS & FACILITIES

Type	Location	Size		Capacity		
		Area(m ²)	Ceiling Height(m)	Theater	Classroom	Banquet
Banquet Room	2F	577.24	5.4	800	500	400



DMZ Ecotourism Information Center

CAPACITY
300 Participants

📍 148-40, Imjingak-ro, Majeong-ri, Munsan-eup, Paju-si, Gyeonggi-do, Republic of Korea

☎ +82-31-956-8310 📠 +82-31-956-8399

🌐 www.ggtour.or.kr 🖱



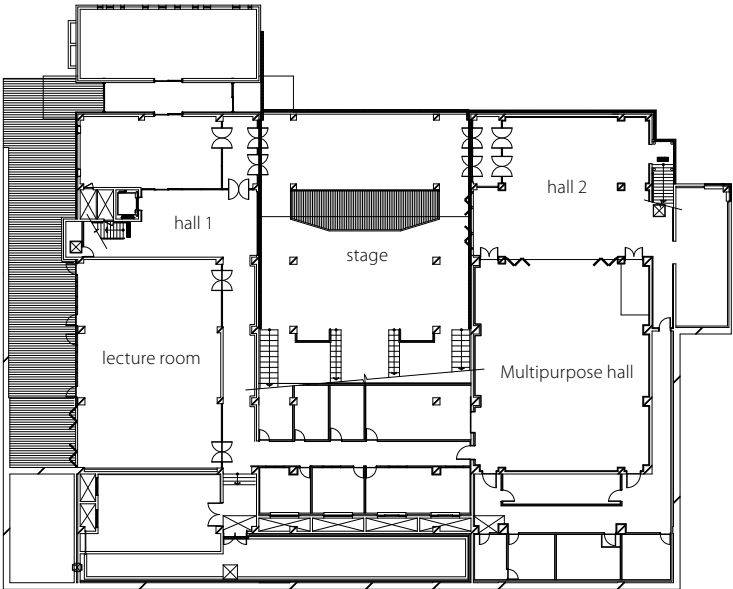
Hub of DMZ Ecotourism Embracing Peace and Nature

Located in Imjingak Pyeonghwa Nuri Park, the DMZ Ecotourism Information Center is a starting point for exploring the area’s profound history and pristine natural resources. The center runs hands-on education programs to highlight the biodiversity and ecological significance of the DMZ. The center also oversees the development of the DMZ environmental conservation projects in cooperation with the Ecosystem Services Partnership (ESP). In addition, multifunctional rooms are available for exhibitions, seminars, and other events.

DIMENSIONS & FACILITIES	Type	Location	Size		Capacity		
			Area(m ²)	Ceiling Height(m)	Theater	Classroom	Banquet
	Education Center	1F	216	4.0	-	70	-
	Multi-Functional Hall	1F	270	4.8	200	120	100
	Hall 2	1F	180	3.9	-	-	30

RESTAURANTS & BARS	Name	Location	Cuisine	Capacity
	The Brunch Annyeong	2F	Brunch, Coffee	80

1F



The MVL Hotel Goyang

CAPACITY
1,040 Participants

📍 20, Taegeuk-ro, Ilsandong-gu, Goyang-si, 10394, Gyeonggi-do (#1756 Janghang-dong), Korea ★ 5-star

☎ +82-31-927-7700 📠 +82-31-927-7652

🌐 www.mvlhotel.com/goyang 🖱



Special Accommodation for Visitors to KINTEX and Hallyu World

The MVL Hotel is at the heart of the Hallyu World, an entertainment mecca that integrates tourism, culture, and IT. As the first 5-star hotel in Gyeonggi Province, The MVL Hotel provides a high-quality business environment and the finest customer service. Located a 10-minute walk from KINTEX, the hotel houses a convention center with state-of-the-art interpretation system. The hotel features 377 guestrooms including 34 suites, restaurants, fitness club and business center.

DIMENSIONS & FACILITIES

Type	Location	Size		Capacity		
		Area(m ²)	Ceiling Height(m)	Theater	Classroom	Banquet
Grand Ballroom	2F	721	12	680	450	540
IRIS	1F	378	7.8	330	220	260
LILY, CALLA, DAISY	1F	58	3.4	30	20	25
Business Center	1F					-

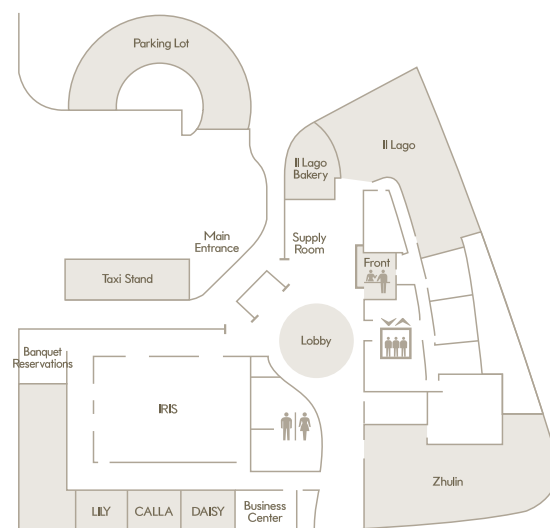
NUMBER OF ROOMS

Number of Rooms	Type							
	Superior (Double/Twin)	Family Twin	Deluxe Twin	Junior Suite (Twin)	Executive Suite (Double/Twin)	Ambassador Suite	Ambassador Suite	Presidential Suite
377	251	60	32	16	15	1	1	1

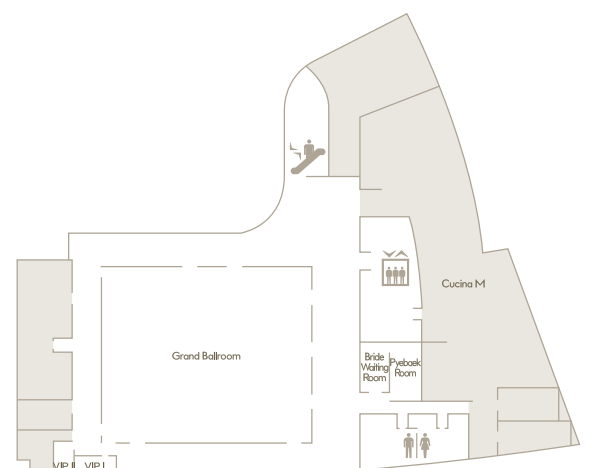
RESTAURANTS & BARS

Name	Location	Cuisine	Capacity
Cucina M	2F	Buffet	232
Zhulin	1F	Chinese Restaurant	132
IL Lago	1F	Lobby Lounge & Bar	65
Deli	1F	Bakery & Wine	-

1F
LILY, CALLA, DAISY



2F
Grand Ballroom



Hotel L'art

CAPACITY
150 Participants

📍 5-9, Jangcha-ro 5beon-gil, Sin-gok-ri, Gochon-eup, Gimpo-si, Gyeonggi-do, Republic of Korea

☎ +82-31-982-1322 📠 +82-31-982-4326(Front), +82-31-985-8408

💻 lartgimpo.com 🖱



Enjoy Comfort and Rest Near the Airports

Located a 5-minute drive from Gimpo Airport, Hotel L'art is an urban family hotel leading brand. In addition to 144 guestrooms featuring a refined modern design, the hotel has restaurants, a business center, and meeting rooms for the convenience of business travelers. It is also close to Incheon International Airport and downtown Seoul is only a half an hour away. Nearby attractions include KINTEX, Hyundai Premium Outlet, and Ara Falls.

DIMENSIONS & FACILITIES

Type	Location	Size		Capacity
		Area(m ²)	Ceiling Height(m)	Banquet
Banquet Hall	B1	-	-	150

NUMBER OF ROOMS

Number of Rooms	Type			
	Deluxe Twin	King Double	Junior Suite	Royal Suite
144	115	24	4	1

RESTAURANTS & BARS

Name	Location	Cuisine	Capacity
ShabuNara	2F	Breakfast Buffet, Shabu-Shabu & Salad Bar	100



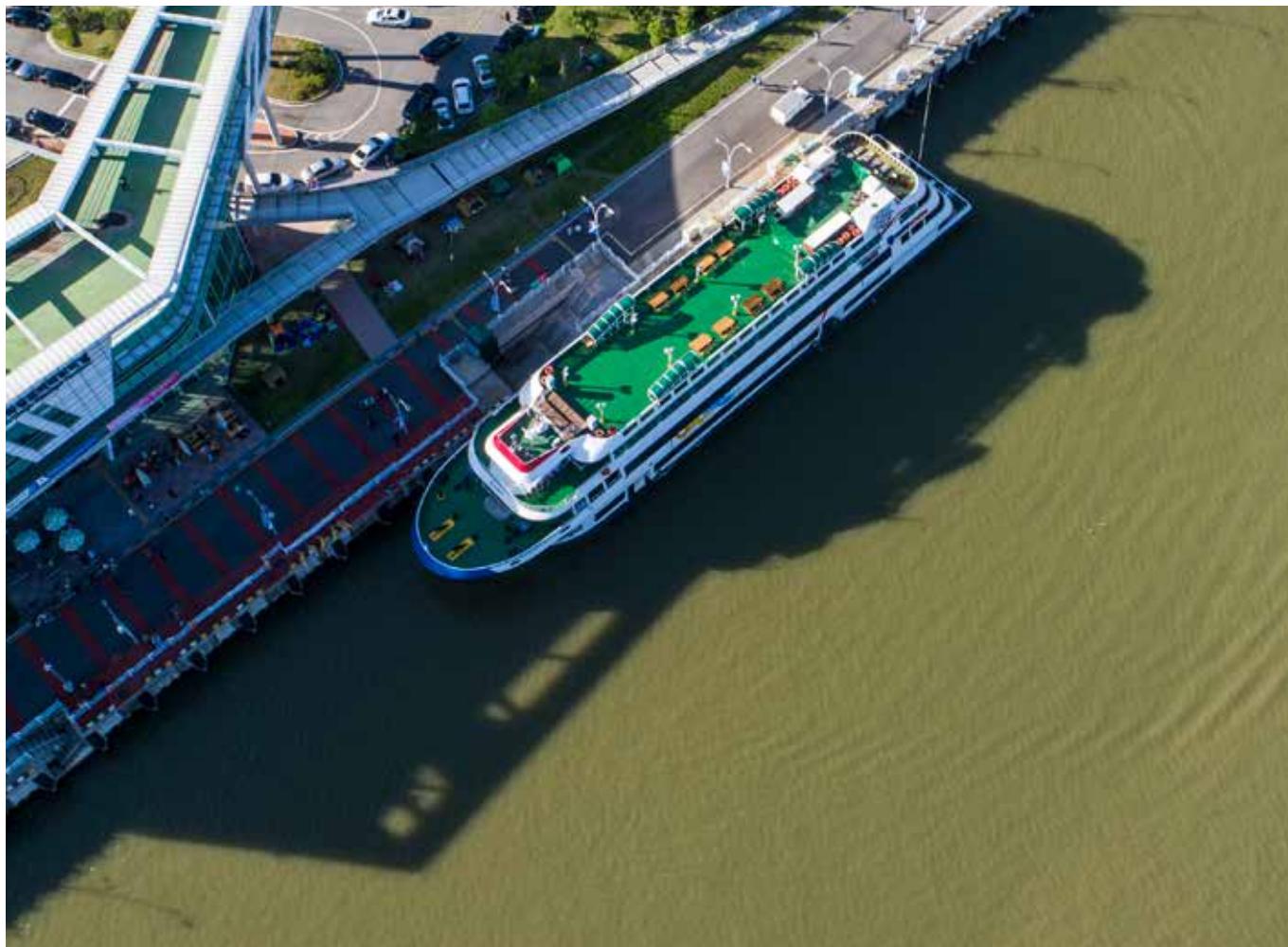
Hyundai Cruise

CAPACITY
1,000 Participants

📍 74, Arayuk-ro 270beon-gil, Gochon-eup, Gimpo-si, Gyeonggi-do, Republic of Korea

☎ +82-32-882-5555 📠 +82-32-885-6161 @ sangukkang@gmail.com

🌐 www.aracruise.co.kr 🖱



Special Banquet on Cruise Ship along Gyeongin Ara Waterway

Hyundai Cruise Ship is a 1,358-ton supersized cruise ship that can accommodate 1,000 people and it is operated in Korea's first canal, Gyeongin Ara Waterway. Ara Waterway is 18km long and connects the Hangang River and the Yellow Sea, and visitors can enjoy a luxury cruise sailing starting from Ara Gimpo Passenger Terminal to major sites such as Ara Waterfall and Ara Maru Observatory. Especially, on weekends it offers dinner cruise with fireworks, music and performances including Korean fusion percussion and magic shows. Enjoy a buffet-style dinner and stunning fireworks.

DIMENSION & FACILITIES

Type	Location	Size		Capacity		
		Area(m ²)	Ceiling Height(m)	Theater	Classroom	Banquet
Diamond Hall	1F	425	3.5	450	350	300
Sapphire Hall	2F	425	2.3	450	350	300
Open Garden	3F	425	2.5	350	250	120
Open Deck	4F	425	-	300	250	150

RESTAURANTS & BARS

Name	Location	Cuisine
Diamond Hall	1F	Buffet lunch, Dinner
Sapphire Hall	2F	



📍 300, Hallyu world-ro, Ilsanseo-gu, Goyang-si, Gyeonggi-do, Republic of Korea

☎ +82-1566-2232 🌐 www.onemount.co.kr 🖱



Indoor Theme Park with Summer Sledding and Winter Wave Pool

Onemount is a cultural complex consisting of a shopping mall and a theme park, where summer and winter coexist all year round. Key attractions of the indoor Water Park include Extreme Wave Pool and Kingball Ride. You can unwind at the warm Spa Pool after the thrilling rides. The highlight of the Snow Park is the Rainbow Slide, featuring fantastic lighting, and the fire art show on ice is another fun event.



Aqua Planet Ilsan

📍 282, Hallyu world-ro, Ilsanseo-gu, Goyang-si, Gyeonggi-do, Republic of Korea

☎ +82-31-960-8500 🌐 www.aquaplanet.co.kr/ilsan 📍



Aquarium Full of Magic and Fantasy

Aqua Planet Ilsan, combined with an indoor zoo, is the largest convergence aquarium in the metropolitan area. The highlight of the aquarium is the underwater performance “Aqua Dream” showcased in Deep Blue Sea, which is a large water tank of up to 2,000 tons. The synchronized show, presented by a shoal of fish and stingrays, is an incredible sight to behold.



📍 217-6, Kintex-ro, Ilsanseo-gu, Goyang-si, Gyeonggi-do, Republic of Korea
☎ +82-1899-6611 🌐 motorstudio.hyundai.com/goyang 🖱



New Automotive Journey to See and Experience Automobiles

Hyundai Motorstudio is Korea’s largest automotive theme park in Goyang. It is a multiplex cultural space of Hyundai Motors where visitors can experience and learn about its manufacturing process and functions. It also accommodates various facilities such as a restaurant with diverse and delicious cuisines, cozy cafés, and a special brand shop.

DIMENSION &
FACILITIES

Type	Location	Size		Capacity		
		Area(m ²)	Ceiling Height(m)	Theater	Classroom	Banquet
Multi-Functional Hall	3F	442	6	320	200	180

RESTAURANTS &
BARS

Name	Location	Cuisine	Capacity
Kitchen	4F	Korean Food, Western Food, Asian Food, Dessert, Drink	150



SIGHTSEEING &
HANDS-ON EXPERIENCE

Camp Greaves DMZ Experience Center (Youth Hostel)

📍 127, Jeoksipja-ro, Paju-si, Gyeonggi-do

☎ +82-31-953-6970, +82-31-953-6984 📠 +82-31-953-8977 🌐 www.dmzcamp131.or.kr 🖱



Camp Greaves, near the DMZ, is the one and only youth hostel to be located within the Civilian Control Line. The center had been a camp base for the U.S. Army Force for about 50 years. It gained even more popularity after appearing as the filming location of the TV drama "Descendants of the Sun (2015)"

DIMENSIONS &
FACILITIES

Type	Location	Size		Capacity
		Area(m ²)	Ceiling Height(m)	Classroom
Meeting Room	1F	31	2.4	15
Lecture Room	1F	72	2.4	60
Lecture Hall	1F	206	3.6	150
GYM	Annex	1,336	12.1	300

SIGHTSEEING

Panmunjeom

➡ Currently, logistics for visitors to tour Panmunjeom Joint Security Area (JSA) freely is under discussion.



It is the area on the DMZ military demarcation line where the Korean Armistice Agreement was signed on July 27, 1953 and also historic inter-Korean summit was held on April 27, 2018. Official name of Panmunjeom is 'JSA (Joint Security Area)' and it became even more famous after a movie released in 2000, 'Joint Security Area' by director Chan-wook Park. Visitors can see Bridge of No Return, old Jangdan railway station of Gyeongui line and abandoned steam locomotive. Also a fireworks cruise with buffet-style dinner is available.

VIEWING

Aram Nuri

📍 1286, Jungang-ro, Ilsandong-gu, Goyang-si, Gyeonggi-do, Republic of Korea
☎ +82-1577-7766 📠 +82-31-960-9717 @ artgy@artgy.or.kr 🌐 www.artgy.or.kr 🖱



Aram Nuri is a global art center housing multipurpose theaters, art gallery, and a concert hall exclusively for classical music performances. Notable facilities include an experimental theater with movable seat frames and Norumok Outdoor Theater surrounded by Jeongbalsan Mountain.

DIMENSIONS & FACILITIES	Type	Location	Size		Capacity
			Area(m ²)	Ceiling Height(m)	Theater
	Aram Opera house	Aram	1,690	12	1,887
	Aram Concert Hall	Aram	250	15	1,449
	Saerasae Digital Theater	Aram	249	6	300
	Norumok Outdoor Theater	Aram	470	-	1,000

HANDS-ON EXPERIENCE

Korean Traditional Stone Pot Bibimbap Cultural Experience Hall

📍 19-11, Yongdu-dong, Deogyang-gu, Goyang-si, Gyeonggi-do, Republic of Korea
☎ +82-2-386-9595 @ weiming800924@naver.com



It is a major tourist site in Goyang, Gyeonggi, where visitors can experience Korean traditional bibimbap. Visitors can make their own bibimbap with freshly made white rice on natural stone, colorful vegetables, fried meat and mix them with red-pepper paste. On the first floor, displays about the history of bibimbap and Korean specialties are exhibited and visitors can take photos in Korean traditional clothes before their meals.

SHOPPING

Hyundai Department Store – KINTEX Branch

📍 817, Hosu-ro, Ilsanseo-gu, Goyang-si, Gyeonggi-do, Republic of Korea

☎ +82-31-822-2233 📠 +82-31-822-2219

🌐 www.ehyundai.com 🖱



The department store offers a pleasant shopping experience with luxury brand fashion goods, spacious rooftop gardens, and a movie theater. Opened in 2016, the FX Mirror virtual fitting experience zone allows customers to virtually try out a wide range of clothing before purchase.

SHOPPING

Paju Premium Outlets, a Shinsegae Simon Center

📍 200, Pilseung-ro, Beopheung-ri, Tanhyeon-myeon, Paju-si, Gyeonggi-do, Republic of Korea

☎ +82-1644-4001 📠 www.premiumoutlets.co.kr/paju 🖱



Paju Premium Outlets, featuring an Art Deco style architecture with a fountain plaza and a clock tower, is reminiscent of the American downtown in the 1920s and 30s. The outlet center houses 220 high-end brands at affordable prices, offering a convenient shopping experience. It also recently opened a LINE FRIENDS store to showcase Korea's popular mobile messenger characters.

Lotte Premium Outlet - Paju Branch

📍 390, Hoedong-gil, Paju-si, Gyeonggi-do, Republic of Korea ☎ +82-31-960-2500

☎ +82-31-960-2510 🌐 store.lotteshopping.com/handler/Main-Start?subBrchCd=054 📍



The outlet consists of more than 250 premium brands such as Prada, Tag Heuer, Paul Smith, etc. It also features a movie theater, a varied array of eateries, and recreational facilities like the 4D racing stadium. Nearby attractions include Heyri Art Village and Paju Book City, allowing visitors to enjoy both shopping and leisure.

Hyundai Premium Outlet Gimpo

📍 100, Arayuk-ro 152beon-gil, Jeonho-ri, Gochon-eup, Gimpo-si, Gyeonggi-do, Republic of Korea

☎ +82-31-812-2233 ☎ +82-2-3416-5735 @ hr861207@naver.com

🌐 www.ehyundai.com/newPortal/outlet/DP/DP000000_V.do?branchCd=B00172000 📍



Hyundai Premium Outlet Gimpo, overlooking Ara Waterway, is the nearest outlet to Seoul. The outlet consists of more than 200 premium fashion brands and rest areas, most notably the Sky Garden on the rooftop. In addition to shopping, visitors can enjoy cruising along the waterway and fireworks on weekends.

SHOPPING

Lakins Mall

📍 817, Hosu-ro, Ilsanseo-gu, Goyang-si, Gyeonggi-do, Republic of Korea

☎ +82-31-912-1170 📠 +82-31-912-2170 @ move34@naver.com 🌐 www.lakins.co.kr 🖱



Lakins Mall is a one-stop shopping mall holding a department store, an outlet mall, and a movie theater. The mall provides a convenient shopping experience and spacious parking facilities. Nearby attractions include Ilsan Lake Park and Aqua Planet.

SHOPPING

Western Dom

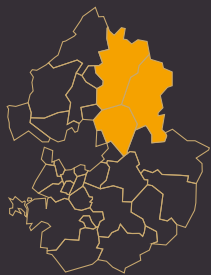
📍 24, Jeongbalsan-ro, Ilsandong-gu, Goyang-si, Gyeonggi-do, Republic of Korea

☎ +82-31-931-5114 @ ture2580@naver.com



Located in the new city, Ilsan, Western Dom (B2F to 10F) is an open street shopping mall and houses about 500 stores. It offers restaurants with diverse cuisines around the world, fashion, accessories, cosmetic stores and a multiplex movie theater. Lafesta complex shopping mall and Ilsan Lake Park are located nearby Western Dom.

NORTH EASTERN AREA





CheongShim Peace World Center

CAPACITY
25,200 Participants

📍 258, Misari-ro, Seorak-myeon, Gapyeong-gun, Gyeonggi-do, Republic of Korea

☎ +82-31-589-5200 📠 +82-31-589-5210 @ sfcom@cspwc.co.kr

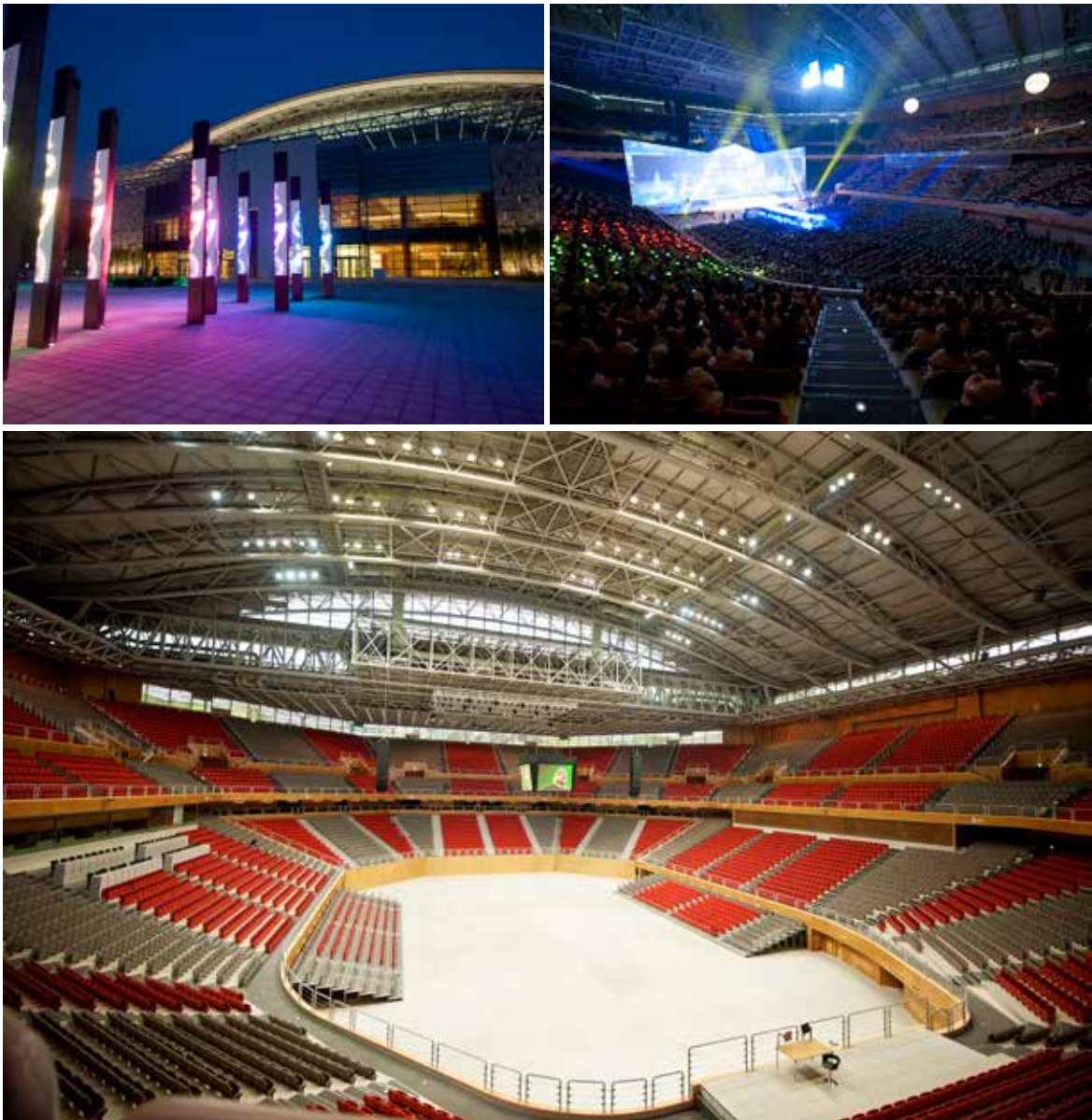
🌐 www.cspwc.co.kr 🖱



Unique Venue Holding Limitless Potential for Cultural Experience

CheongShim Peace World Center is an indoor arena-style cultural complex that can accommodate up to 25,000 people. This unique venue offers a chance to experience the breathtaking nature of Cheongpyeong Lake, arts and culture, and varied international events. The center is equipped with state-of-the-art facilities for hosting concerts, musicals, K-pop performances, etc. Key features include movable stages with arena seating, sliding chairs, and a top-notch AV system. The center is also an optimal venue for large-size MICE events and has studios for shooting Korean films, TV dramas, and music videos.

DIMENSIONS & FACILITIES	Type	Location	Size		Capacity		
			Area(m ²)	Ceiling Height(m)	Theater	Classroom	Banquet
	Main Floor	B1	137,217	45	25,000	25,000	6,000
	Event Hall	B1	280	3.8	-	200	100





The center provides a complete set of infrastructure to ensure successful hosting of all events. It has an event hall for banquets and seminars, VIP room, waiting room, dressing room, and simultaneous interpretation booths. As for lodging facilities, it has 104 guestrooms that can accommodate up to 600 people and there are other hotels and resorts in the vicinity. CheongShim International Center, located within 5 minutes away, is suitable for seminars, workshops, recreation activities and accommodation with an international conference hall and an auditorium for up to 300 people.



B1



1F



2F



Good Morning HRD Center

CAPACITY
1,265 Participants

📍 137-49, Myeongjisan-ro, Sangpan-ri, Jojong-myeon, Gapyeong-gun, Gyeonggi-do, Republic of Korea

☎ +82-31-584-3945 📠 +82-31-584-3954 @ gmhrd@naver.com

🌐 www.gmhrd.com 🖱



Workshop Venue Surrounded by Mountains and Rivers

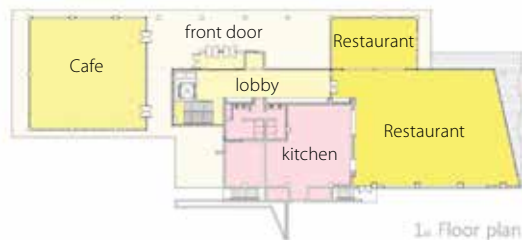
Good Morning HRD Center is nestled between Unaksan and Myeongjisan mountains in Gapyeong, the most pristine region in the metropolitan area. The center consists of 44 guestrooms and 10 meeting rooms, including seminar rooms and an auditorium that has a 450-seat capacity. The extensive lawn plaza traversed by Jojongcheon Stream provides an ideal place for a variety of events with a barbecue area for group gatherings.

DIMENSIONS & FACILITIES	Type	Location	Size		Capacity		
			Area(m ²)	Ceiling Height(m)	Theater	Classroom	Banquet
	Auditorium	2F	432	7	300	450	200
	Classroom 1	2F	212	5	150	220	120
	Classroom 2	B1	216	3	150	220	120
	Classroom 3	1F	151	3	80	120	60
	Seminar Room 1	2F	87	2.5	60	70	-
	Seminar Room 2	2F	58	2.5	30	45	-
	Seminar Room 3	2F	58	2.5	30	45	-
	Seminar Room 4	B1	55	2.5	30	45	-
	Seminar Room 5	1F	40	2.5	15	25	-
	Seminar Room 6	B1	36	2.5	15	25	-

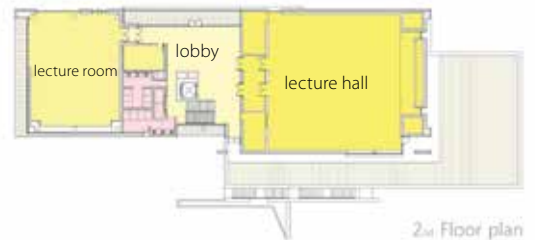
NUMBER OF ROOMS	Number of Rooms	Type		
	44	43m ²	83m ²	100m ²
		25	9	10

RESTAURANTS & BARS	Name	Location	Cuisine	Capacity
	Restaurant	Auditorium Bldg. 1F	Sit-Down Table / Banquet Style	300
	BBQ Patio	Main Bldg. 1F Terrace	Barbecue	400
	Cafe	Auditorium Bldg. 1F	Coffee, Tea	150

Auditorium Bldg. 1F



Auditorium Bldg. 2F



Island Castle Hotel & Resort

CAPACITY
1,550 Participants

📍 22, Janggok-ro, Uijeongbu-si, Gyeonggi-do, Republic of Korea

☎ +82-31-894-0300 📠 +82-31-894-0339 @ smt0332@island-castle.co.kr

🌐 Island-castle.co.kr 🖱



Urban Complex Resort Filled with 365 Days of Joy

Island Castle Uijeongbu consists of an indoor/outdoor water park, spa facilities, hotel, condominium and restaurants. It offers comfortable and modern rooms with scenic views of Suraksan Mountain and Dobongsan Mountain, a large grand ballroom, banquet halls and seven independent medium-and-small banquet rooms for corporate and convention events. Especially, Maya civilization themed water park features exciting attractions such as large slides and wave pools. Visitors can relax and pamper themselves with spa facilities including sulfur hot spring water bade pool, red clay and charcoal saunas.

DIMENSION & FACILITIES

Type	Location	Size		Capacity		
		Area(m ²)	Ceiling Height(m)	Theater	Classroom	Banquet
Grandball Room	2F	558	7.9 (front 5.3)	700	408	400
Diamond	3F	366	2.8	300	140	140
Emerald	3F	169	3.2	120	60	63
Crystal	3F	152	3.2	130	80	63
Sapphire	3F	115	2.8	80	-	54
Topaz	3F	115	3.2	90	50	54
Ruby A	3F	84	3.2	65	-	36
Ruby B	3F	84	3.2	65	-	36

NUMBER OF ROOMS

Number of Rooms	Type					
	Deluxe Double Room	Deluxe Twin Room	Corner Double Room	Island Twin Room	Junior Suite Room	Castle Suite Room
101	14	56	14	14	1	2

RESTAURANTS & BARS

Name	Location	Cuisine	Capacity
Lastella	2F	Breakfast Buffet, International Buffet, Western Set Menu, Beef Marrow Bone Thick Soup, Bibimbap table d'hote, Pork Casserole Etc	48



Hanwha Resorts Sanjeong Lake Annecy

CAPACITY
850 Participants

📍 402, Sanjeonghosu-ro, Yeongbuk-myeon, Pocheon-si, Gyeonggi-do, Republic of Korea

☎ +82-2-789-5192 📠 +82-2-789-5525

🌐 www.hanwharesort.co.kr 🖱



Clean Resort Surrounded by Sky, Mountain and Lake

Pocheon Sanjeong Lake Anney is an all-year-round resort that was renovated in 2013, inspired by 'Annecy', a village in the French Alps. Sanjeong Lake, which means 'a clear lake like a well in the mountains', offers a variety of activities in all seasons. In spring and autumn, guests can enjoy walking around the lake and trekking among flame grass in Myeongseongsan Mountain. Also other activities are available: rafting in the Hantangang River during summer and snow sled during winter. It houses royal suites and family rooms, training and educational space, and a multipurpose hall which can accommodate about 100 to 200 people for a lecture or banquet. Furthermore, it is famous for its hot spring sauna, and it features an outdoor garden for barbeques, and entertainment facilities such as table tennis, billiards, and karaoke.

DIMENSION & FACILITIES	Type	Location	Size		Capacity			
			Area(m ²)	Ceiling Height(m)	Theater	Classroom	Divisible Room	Banquet
	Blan I	B1	-	3	200	150	90	200
	Blan II	B1	-	3	120	80	81	
	Noir	B1	-	2.9	150	110	72	100
	Forum 1	B1	-	2.9	80	60	54	-
	Forum 2	B1	-	2.9	80	60	54	-
	Forum 3	B1	-	2.9	50	30	27	-
	Forum 4	B1	-	2.9	50	30	27	-
	Forum 5	B1	-	2.9	30	18	-	-
	Forum 6	B1	-	2.9	30	18	-	-
	Forum 7	B1	-	2.9	30	18	-	-
	Forum 8	B1	-	3	30	18	-	-

NUMBER OF ROOMS	Number of Rooms	Type	
	212	Family	Royal
		206	6

RESTAURANTS & BARS	Name	Location	Cuisine	Capacity
	Arte	B1	Sausage stew, Braised spicy chicken, Pork with leaf wrapped rice	188
	Café Lac	1F	Breakfast Buffet	74



Kensington Resort

CAPACITY
1,710 Participants

📍 430, Cheonggun-ro, Deokhyeon-ri, Sang-myeon, Gapyeong-gun, Gyeonggi-do, Republic of Korea

☎ +82-31-584-9380 📠 +82-31-584-4205 @ kencp_front@eland.co.kr

🌐 www.kensingtonhotel.com 🖱



Healing Resort for Meetings, Leisure, and Forest Therapy

Located a 40-minute drive from Seoul, Kensington Resort offers a truly relaxing time in nature. The resort is a perfect site for corporate training and popular attractions like the Garden of Morning Calm, Namiseom Island, and Petite France are within a 30-minute drive. The resort's Mugunghwa Hall can accommodate up to 300 people and provides a beam projector, movable screen, and VTRs for meetings. Additional facilities include a swimming pool, outdoor barbecue garden, fun station, karaoke rooms, and more.

DIMENSIONS & FACILITIES

Type	Location	Size		Capacity		
		Area(m ²)	Ceiling Height(m)	Theater	Classroom	Banquet
Main Building						
Onyx Hall	1F	96	3	70	45	50
Beach Hall	1F	156.68	3	180	90	80
Sapphire Hall	1F	152.07	3	150	80	60
Diamond Hall	1F	152.07	3	150	80	60
Annex						
Mugunghwa Hall	2F	396.7	5	550	350	250
Bigarim Hall	1F	185.12	3	200	130	100
Rose Hall	2F	95.87	5	70	50	40
Chrysanthemum Hall	2F	95.87	5	70	50	40
Camellia Hall	2F	95.87	5	70	50	40

NUMBER OF ROOMS

Number of Rooms	Type			
176	82.2m ²	91.33m ²	109.6m ²	181.775m ²
	96	52	24	4

RESTAURANTS & BARS

Name	Location	Cuisine	Capacity
Main Building			
Hanyang Restaurant	1F	Korean / Western / Buffet	100
Lobby Lounge (Cafe)	1F	Coffee / Drink / Bread	50
Annex			
Dumesangol	1F	Group Dining	300



W Jiwoo Resort

CAPACITY
400 Participants

📍 970-9, Bukhangangbyeon-ro, Gapyeong-eup, Gapyeong-gun, Gyeonggi-do, Republic of Korea

☎ +82-31-581-7770 📠 +82-0502-280-7730 @ wjiwooresort@naver.com

🌐 wjiwooresort.com 🖱



Single-Family House with View of Namiseom & Jaraseom Islands, Gapyeong

Located between Gapyeong and Chuncheon, W Jiwoo Resort boasts beautiful views overlooking the Bukhangang River. There are various types of rooms catering to customers: a two-storey room, a home theater room with a beam projector and a large screen, a room with a private pool, and a penthouse. It offers Korean breakfast and buffet-style BBQ service for dinner, an outdoor swimming pool and a 24-hour convenience store. It is located near Namiseom Island, which Gapyeong is famous for, and Jaraseom Island, which is well known for its international jazz festival.

DIMENSION & FACILITIES

Type	Location	Size		Capacity
		Area(m ²)	Ceiling Height(m)	
A type	3F	48.15	5.4	-
B type	2F	48.15	2.5	-
C type	1F	48.15	2.5	-
F type	2F	162.5	2.4	-
Outdoor Pool	1F	-	-	-

NUMBER OF ROOMS

Number of Rooms	Type			
98	A type	B type	C type	F type
	34	34	26	4

RESTAURANTS & BARS

Name	Location	Cuisine	Capacity
Restaurant	1F	Buffet	100
Café	1F	-	-
Convenience Store	1F	-	-



Chi-ong Art Center

CAPACITY
253 Participants

📍 300, Sumogwon-ro, Haenghyeon-ri, Sang-myeon, Gapyeong-gun, Gyeonggi-do, Republic of Korea

☎ +82-31-585-8649 @ sookueng49@hanmail.net

🌐 www.chi-ong.co.kr 🖱



Art Space in a Traditional Hanok

The whole art center is set in a hanok (traditional Korean house). Hanok stay experience is highly recommendable for those who want to feel the quaint beauty of its lofty gate, wooden patio, pond, and pavilion. At the entrance of the three-storied center is a Korean restaurant serving healthy meals using organic ingredients. The second floor contains an art gallery and seminar rooms for up to 80 people, while the third floor consists of traditional Korean-style guestrooms. Guests can participate in a variety of cultural programs such as tea ceremony, traditional songs, natural dye, and traditional mask making.

DIMENSIONS & FACILITIES

Type	Location	Size		Capacity	
		Area(m ²)	Ceiling Height(m)	Classroom	Banquet
Seminar Room	1F	926	2	40	-
Art Gallery	1F	926	2	-	60
Lounge	1F	694	2	-	50
Chionsan Room	1F	347.12	2	15	-
Yukgakjeong	2F	694	2	-	30
Baeksongjae	1F	1,041	2	-	20
Suhyangheon	1F	625	2	-	13
Seokidang	1F	926	2	-	25

NUMBER OF ROOMS

Number of Rooms	Type		
	3 person Room	5 person Room	10 person Room
11	6	4	1

RESTAURANTS & BARS

Name	Location	Cuisine	Capacity
Chungneong Inn	1F	Korean	50



📍 35, Cheongsin-ro 947beon-gil, Samjeong-ri, Sinbuk-myeon, Pocheon-si, Gyeonggi-do, Republic of Korea
☎ +82-31-535-6497 📠 +82-70-8282-8293 @ webmaster@herbisland.co.kr 🌐 www.herbisland.co.kr



Herb-themed Meeting Venue filled with Healing and Romance

Herb Island is a theme park showcasing Mediterranean herbs and the world's first herb museum. Delivering an ultimate healing experience with herb therapy, it is also a great corporate meeting venue for various workshops, seminars, and other events. Herb Island offers a wide range of team building programs such as herb scented candle and soap making. Visitors can enjoy the night views of the herb garden during festival periods.

DIMENSIONS & FACILITIES

Type	Location	Size		Capacity	
		Area(m ²)	Ceiling Height(m)	Theater	Classroom
Outdoor Stage	Venice Village	330	-	-	-
Banquet Hall	Athens hall restaurant	991	3.5	-	500
Workshop Center (Wedding Hall)	Athens hall restaurant	264	5.7	100	100
Seminar Room A (Neroli Hall)	Athens hall restaurant	264	3.5	100	100
Seminar Room B (Rose Hall)	Athens hall restaurant	264	3.5	100	100
Seminar Room B (Lavender Hall)	Athens hall restaurant	264	3.5	100	100
Seminar Room C (Healing Hall)	Herbs Healing Center	99	2.8	50	-
A (Neroli) VIP Hall	Athens hall restaurant	66	3.5	20	20
B (Rose) VIP Hall	Athens hall restaurant	66	3.5	20	20



Petite France

📍 1063, Hoban-ro, Cheongpyeong-myeon, Gapyeong-gun, Gyeonggi-do, Republic of Korea

☎ +82-31-584-8200 📠 +82-31-8078-6812 @ 8200camp@naver.com 🌐 www.pfcamp.com 📱



French Cultural Village with Flower, Star and Little Prince

Petite France Gapyeong is located at the foot of Homyeongsan Mountain and it is a cultural village and a theme park based on the concept of 'Little France in Korea'. It offers various European cultural exhibitions including a memorial hall dedicated to famous French writer, Antoine de Saint-Exupéry, 'Maison d'Orgel' or Orgel House, and 'Salle de Séjour' featuring European style living rooms. Visitors can experience unique European art performances, such as the French traditional hand puppet show, 'Guignol', a marionette puppet show, and little prince plaster art.



The Garden of Morning Calm

📍 432, Sumogwon-ro, Haenghyeon-ri, Sang-myeon, Gapyeong-gun, Gyeonggi-do, Republic of Korea

☎ +82-1544-6703 📠 +82-31-584-9768 @ koreangarden@naver.com

🌐 www.morningcalm.co.kr/html/main.php 🖱



Theme Garden with Festival of Four Seasons Flowers and Lights

At the foot of Chungnyeongsan Mountain is a Korean-style garden capturing the image of a calm morning. Dubbed as a heaven of flowers, the arboretum features 22 different themed gardens and scenic walkways spanning across 330,000m². The Lighting Festival in the winter offers a great spectacle.



SIGHTSEEING &
HANDS-ON EXPERIENCE

Pocheon Art Valley

📍 234, Art valley-ro, Giji-ri, Sinbuk-myeon, Pocheon-si, Gyeonggi-do, Republic of Korea

☎ +82-31-538-3485 📠 +82-31-538-3045 @ lsj9932@korea.kr 🌐 www.artvalley.pocheon.go.kr 📍



Pocheon Art Valley is a culture and arts complex established in an abandoned granite quarry. Take the monorail to the summit to be greeted by majestic cliffs overlooking the emerald Cheonjuho Lake. There is also a very interesting Astronomical Science Museum, where you can observe the night sky. Walking along the stone sculpture park, you will feel that culture, arts, nature and human beings are in harmony as one.

DIMENSIONS &
FACILITIES

Type	Location	Size		Capacity	
		Area(m ²)	Ceiling Height(m)	Theater	Classroom
Astronomical Science Center Classroom	Astronomical Science Museum 3F	719.377	3	-	40
Education Exhibition Center Classroom	Education Exhibition Center 2F	479.83	-	-	40
Sanmaru Performance Hall	Outdoor	1,510	-	400	-
Lake Performance Hall	Outdoor	1,165	-	400	-

SIGHTSEEING &
HANDS-ON EXPERIENCE

Sandulsori Botanical Garden

📍 48-31, Buramsan-ro 59beon-gil, Namyangju-si, Gyeonggi-do, Republic of Korea

☎ +82-31-574-3252 📠 +82-31-574-3254 @ sdsori@naver.com 🌐 www.sandulsori.co.kr 📍



Sandulsori Botanical Garden is a natural eco-botanical garden with more than 1,200 species of plants growing on 140,000m² of land. The garden features a gallery café and healing center, as well as space for meetings, exhibitions, and banquets. Visitors can enjoy a meditative stroll through the garden filled with wildflowers and herbs.

Bears Town Resort

📍 27, Geumgang-ro 2536beon-gil, Sohak-ri, Naechon-myeon, Pocheon-si, Gyeonggi-do, Republic of Korea
 ☎ +82-31-540-5151 📠 +82-31-534-2877 @ bearstown12@naver.com 🌐 www.bearstown.com 📍



Just a 50 minute-drive away from Seoul is Bears Town Resort, an all-year-round leisure complex with the largest ski resort in the metropolitan area. The resort features 11 ski slopes, including a FIS approved slope, exclusively for expert skiers, and a condominium with 300 guestrooms.

DIMENSIONS & FACILITIES

Type	Location	Size		Capacity		
		Area(m ²)	Ceiling Height(m)	Theater	Classroom	Banquet
Medium Banquet Hall	Tower Condo 4F	347.11	-	250	200	1,000
Convention Hall	Tower Condo 1F	337.19	-	300	250	100
Seminar Hall 1	Tower Condo 4F	89.26	-	100	50	50
Seminar Hall 2	Tower Condo 4F	89.26	-	100	50	50
Seminar Hall 3	Tower Condo 4F	214.88	-	150	50	50
Medium Banquet Hall 2	Tower Condo 14F	181.82	-	250	200	100
Soho Room	Tower Condo 2F	26.45	-	40	30	20

Amazing Park

📍 860, Tapsin-ro, Geumdong-ri, Sinbuk-myeon, Pocheon-si, Gyeonggi-do, Republic of Korea
 ☎ +82-31-532-1881 📠 +82-31-532-5890 @ pcn2013@naver.com 🌐 www.amazingpark.co.kr 📍



Amazing Park is a cultural complex incorporating play, rest, and science experience in nature. Special features include Nature Zone with pathways shrouded in wood and Science Zone, which showcases over 200 science instruments. The 300-meter-long Hidden Bridge is a healing attraction filled with the delightful scent of evergreen trees.

SIGHTSEEING &
HANDS-ON EXPERIENCE

Sansawon

📍 25, Hwadong-ro 432beon-gil, Hwahyeon-ri, Hwahyeon-myeon, Pocheon-si, Gyeonggi-do, Republic of Korea
 ☎ +82-31-531-9300 📠 +82-31-531-0442 @ sansawonin@soolsool.co.kr
 🌐 www.sansawon.co.kr 🖱



Sansawon is a traditional Korean brewery in Pocheon, a city known for its clean mountains and rivers. A wide range of hands-on programs, such as traditional liquor tasting and brewing, take place at the hanok (traditional Korean house) and pavilion, used for storing malt and fermenting liquor.

SIGHTSEEING &
HANDS-ON EXPERIENCE

Namyangju Organic Theme Park

📍 881, Bukhangang-ro, Sambong-ri, Joan-myeon, Namyangju-si, Gyeonggi-do, Republic of Korea
 ☎ +82-31-560-1471~2 📠 +82-0303-0900-1510 🌐 www.organicmuseum.or.kr 🖱



Opened in 2011, it is the world's first museum of organic agriculture. After holding meetings at the 360-seat multifunctional auditorium, participants can enjoy healthy meals at the organic restaurant "Farmers Market." The place offers diverse hands-on programs like strawberry picking and Kimchi making.

DIMENSIONS &
FACILITIES

Type	Location	Size		Capacity	
		Area(m ²)	Ceiling Height(m)	Theater	Classroom
Multi-Functional Auditorium	1F	493	-	300	-
Kimchi Experience Center	Farmers Market Bldg.	354	-	-	100

SOUTH
WESTERN
AREA



Seoul

Incheon

Bucheon

• 096_The Koryo Hotel

Gwang-
myeong

Gwacheon

Uiwang

Ansan

086_Hotel Square •

076_Royal Heritage Hotel

Suwon

074_Ramada Plaza Suwon

070_Suwon
Convention
Center

072_Novotel Ambassador Suwon •

090_Value Hotel Suwon

082_Ibis Ambassador Suwon

092_Hotel Vella Suite

088_Landmark
Hotel

094_Suwon Silkroad Hotel

• 102_Gyeonggi-do Youth Center

078_Rolling Hills Hotel •

084_Hotel Prumir •

066_SINTEX

080_Shilla Stay
Dongtan

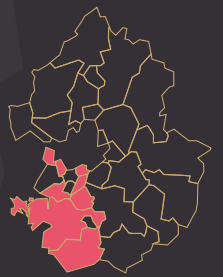
100_La Vie D'or Resort

Hwaseong

098_Ramada Pyeongtaek Hotel

Pyeongtaek

SOUTH WESTERN AREA



📍 286, Seja-ro, Botong-ri, Jeongnam-myeon, Hwaseong-si, Gyeonggi-do, Republic of Korea

☎ +82-31-350-4800~3 📠 +82-31-810-8083

🌐 <https://laviedorresort.co.kr/convention.asp> 🖱



Perfect Venue for Successful Business and Relaxation at the Resort

Run by Korea's La Vie D'or Resort, SINTEX (Suwon International Exhibition) is a representative convention center in southern Gyeonggi Province. Center visitors can take advantage of La Vie D'or Resort's diverse facilities, including its guestrooms, golf course, indoor swimming pool, sauna, and more. SINTEX's Grand Ballroom, divisible into three smaller halls, can accommodate more than 1,000 people. The center also has Marronnier Room, ideal for meetings and seminars with a capacity of 150, and Maple Room and Oak Room for small-sized meetings. The outdoor garden is a popular site for large banquets.

DIMENSIONS & FACILITIES

Type	Location	Size		Capacity		
		Area(m ²)	Ceiling Height(m)	Theater	Classroom	Banquet
Grand Ballroom(1+2+3)	1F	1,680	7.2	2,000	1,200	1,000
Ballroom I	1F	560	7.2	400	200	200
Ballroom II	1F	560	7.2	600	300	300
Ballroom III	1F	560	7.2	600	300	300
Marronnier (1+2)	2F	316	3.9	-	120	-
Marronnier I	2F	155	3.9	-	60	-
Marronnier II	2F	155	3.9	-	60	-
Oak	2F	151	3.9	-	60	-
Maple	2F	88	3.9	-	32	-

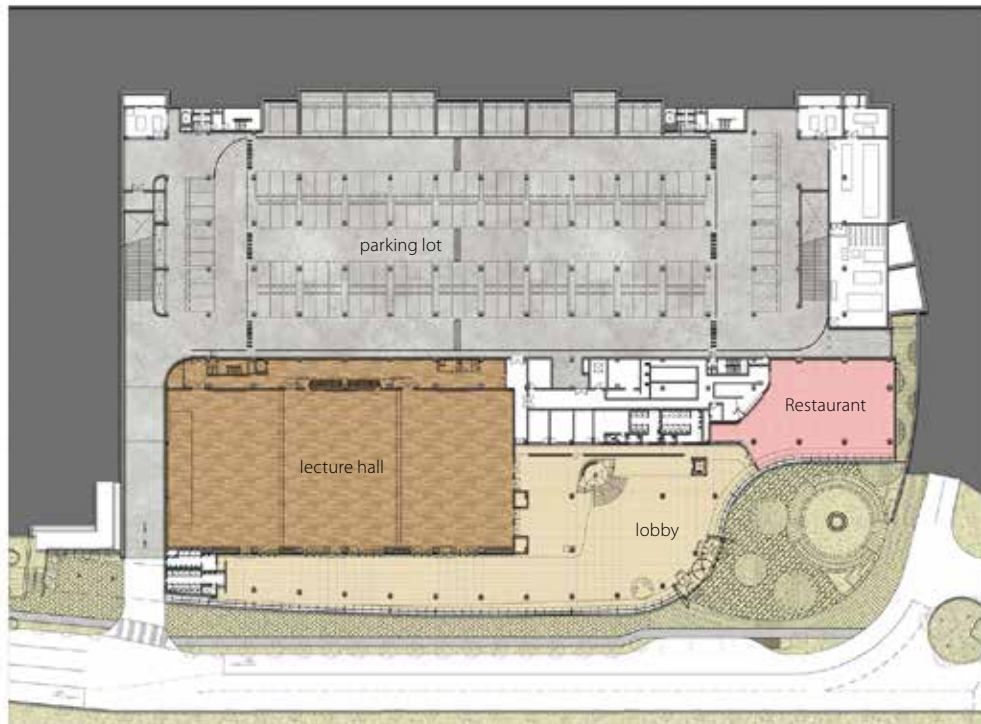




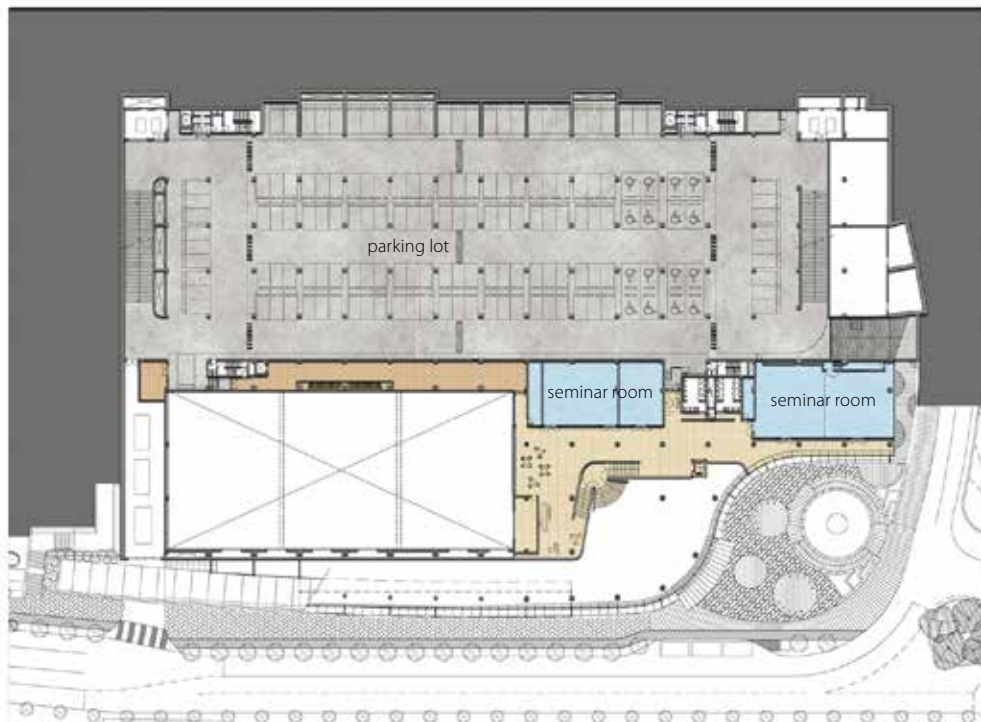
La Vie D'or Resort, featuring European-style architecture in harmony with nature, is a famed shooting location for TV dramas and commercials. The resort offers 241 rooms of 6 different types, including 91 deluxe twin rooms and 150 Korean-style rooms, that can accommodate up to 1,200 people. The golf course allows guests to enjoy the nature in addition to conducting business meetings. The resort has a range of subsidiary facilities including a swimming pool, sauna, fitness center, and a nice bar with karaoke.



SINTEX 1F



SINTEX 2F



Suwon Convention Center

TO BE COMPLETED
IN 2019

📍 Gwanggyohosu-ro, Yeongtong-gu, Suwon-si, Gyeonggi-do, Republic of Korea



Business Mecca, Connects People and Leads the World

Suwon Convention Center will be established as a new MICE destination in southern Gyeonggi Province and become a landmark of historical and cultural city, Suwon. Suwon Convention Center is scheduled to be completed in March 2019 and its total ground area is 97,000m² with two floors underground and five stories above ground. By 2020, the complex will be constructed as an MICE complex housing hotels, department stores, aquarium and more. Gwanggyo City, where Suwon Convention Center will be built, is an international business hub where Samsung Digital City and Gwanggyo Techno Valley are located together. In addition, guests can feel seasonal changes of nature as it is near Lakeside Park of Gwanggyo City, which has received the grand prize for outstanding landscape in Korea. The center is located at the important traffic hub; adjacent to Yeongdong, Gyeongbu and Yongin Seoul Expressways and Gangnam Station is accessible within 30 minutes. Suwon will develop even further as an international MICE city where history, culture and nature coexist.

DIMENSION & FACILITIES

Type	Location	Size		Capacity
		Area(m ²)	Ceiling Height(m)	
Exhibition Hall	1F	7,877	15.7	500 exhibition booths
Exhibition Hall 1		2,085		130 exhibition booths
Exhibition Hall 2		3,672		235 exhibition booths
Exhibition Hall 3		2,120		135 exhibition booths
Conference room	3F	3,040	15.5	3,000
Conference room 1		1,105		1,100
Conference room 2		1,105		1,100
Conference room 3		830		800
Meeting Room (28 room)	1F~4F	4,230	4.5~5.1	4,200



Novotel Ambassador Suwon

CAPACITY
1,790 Participants

📍 902, Deogyong-daero, Paldal-gu, Suwon-si, Gyeonggi-do, Republic of Korea 🌟 4-star

☎ +82-31-547-6600 📠 +82-31-547-6601

🌐 www.novotelsuwon.com 🖱



Hotel where Every Guest is a VIP

Novotel Ambassador Suwon is a 4-star global hotel as one of the hotel chains run by Accor, the French hotel group. The hotel holds 287 rooms featuring the latest designs. The 700m² Grand Ballroom with natural lighting is optimized for large conferences, seminars, and banquets. The banquet hall with a 600-seat capacity is also available for conferences, exhibitions, and other events. The hotel offers exclusive know-how and service to contribute to guests' business success. All guestrooms have wireless internet access and the hotel runs a 24-hour fitness center. It is located in the heart of Suwon with direct access to Suwon Station and the downtown.

DIMENSIONS & FACILITIES	Type	Location	Size		Capacity		
			Area(m ²)	Ceiling Height(m)	Theater	Classroom	Banquet
	Champagne (A+B)	2F	700	4.7	700	360	500
	Champagne A	2F	350	4.7	350	180	210
	Champagne B	2F	350	4.7	350	180	270
	Azalea (1+2+3)	2F	170	2.7	140	70	120
	Azalea 1	2F	60	2.7	40	24	30
	Azalea 2	2F	65	2.7	40	24	30
	Azalea 3	2F	45	2.7	40	24	30
	Board Room	2F	90	2.7	70	30	50
	Nante	3F	90	2.7	60	48	60

NUMBER OF ROOMS	Type						
	Number of Rooms						
287	Superior King	Superior Twin	Deluxe King	Deluxe Twin	Executive King	Suite room	Executive Suite
	50	54	106	35	28	6	8

RESTAURANTS & BARS	Name	Location	Cuisine	Capacity
	The Square	1F	Buffet	230
	Lobby Bar	1F	Snacks & Drinks	30



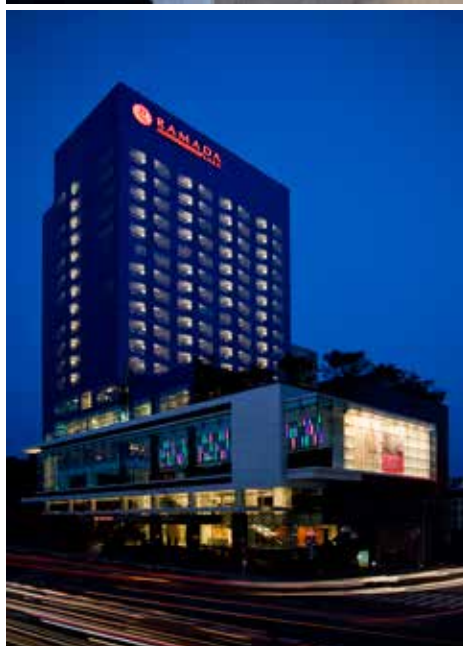
Ramada Plaza Suwon

CAPACITY
2,060 Participants

📍 150, Jungbu-daero, Paldal-gu, Suwon-si, Gyeonggi-do, Republic of Korea 🌟 4-star

☎ +82-31-230-0001 📠 +82-31-230-0005

🌐 www.ramadaplazasuwon.com 🖱



Premium Hotel Known for Its Acclaimed Customized Services

Ramada Plaza Suwon is a 4-star hotel of Wyndham Hotel Group. It is the only hotel in Gyeonggi Province to have been selected as one of the best hotels in Korea according to TripAdvisor Travelers' Choice Awards 2017. All of its facilities provide guest-oriented services. The hotel features stylish and comfortable guest rooms for business travelers and a banquet hall fit to host international-scale seminars. The Executive Floor and Presidential Suite cater to VIP guests, offering secretarial services, free breakfast buffet, laundry services, and access to business center meeting rooms. The hotel's Chinese restaurant serves invigorating cuisine made with medicinal ingredients.

DIMENSIONS & FACILITIES	Type	Location	Size		Capacity		
			Area(m²)	Ceiling Height(m)	Theater	Classroom	Banquet
Large Banquet Hall							
Grand Ballroom(A+B)	3F	605	6.5	600	500	500	
Grand Ballroom A	3F	278.9	6.5	300	240	250	
Grand Ballroom B	3F	269.3	6.5	300	240	250	
Medium Banquet Hall							
Plaza Hall(A+B)	2F	254.2	3.4	200	180	200	
Plaza Hall A	2F	126.5	3.4	90	80	100	
Plaza Hall B	2F	126.5	3.4	90	80	100	
New Wing							
Topaz Hall	2F	207.6	3	180	88	100	
Jade Hall	2F	134.4	3	120	70	80	
Orchid Hall	1F	134.4	3	120	70	80	
Small Banquet Hall							
Maple Room	2F	55.4	3.4	30	30	20	
Oak Room	2F	49.2	3.4	30	30	20	
Board Room	2F	51.7	3.4	Board Rooms 14			
Outdoor Terrace	5F	835.2	-	-	-	200	

NUMBER OF ROOMS	Number of Rooms	Type								
		Superior King	Deluxe Twin	Deluxe King	Premier King	Executive Deluxe	Executive Premier	Korean Suite	Junior Suite	Premier Suite
	288	31	91	87	27	40	7	1	2	1

RESTAURANTS & BARS	Name		Location		Cuisine		Capacity	
	Vistore&Lounge		1F (Main Lobby)		Italian Cuisine & Bar		110	
	The Deli		1F (Main Lobby)		Bakery		-	
	Jinmao		4F		Chinese		132	
	Chefoo's(Outdoor Terrace)		5F		Buffet		230	

Royal Heritage Hotel

CAPACITY
1,500 Participants

📍 869, Jungang-daero, Danwon-gu, Ansan-si, Gyeonggi-do, Republic of Korea ★ 3-star

☎ +82-31-413-2222 📠 +82-70-8170-3890

🌐 www.royalheritage.co.kr 🖱



Ansan's Deluxe Hotel Offering a Large Banquet Hall with Scenic Views

Royal Heritage Hotel is the largest 3-star hotel in Ansan, an industrial city that boasts a green coverage of more than 70%. The hotel has 401 comfortable rooms of various types including Deluxe Twin, Business Double, Triple Rooms, and Suites. The banquet hall, known for its scenic views, can accommodate up to 1,800 people and is suitable for various occasions such as seminars and corporate events. The hotel also features a business center, sky lounge, and fine dining buffet for business travelers. It is conveniently located near Pyeongtaekhang Port and Gwangmyeong Station on the KTX Gyeongbu Line, as well as Lotte Department Store and Lotte Cinema.

DIMENSIONS & FACILITIES	Type	Location	Size		Capacity
			Area(m ²)	Ceiling Height(m)	Banquet
	Amoris Hall	B1F	1,650	6	500
	Grace Hall	2F	-	6	200
	Amber Hall	2F	-	6	200
	Lucia Hall	3F	-	6	200
	Odellia Hall	5F	-	6	200
	Syaina Hall	5F	-	6	200

NUMBER OF ROOMS	Number of Rooms	Type			
	401	Business Single	Deluxe Twin	Triple Room	Suite Room
		50	332	14	5

RESTAURANTS & BARS	Name	Location	Cuisine	Capacity
	Breakfast restaurant	B1F	Buffet	600
	Banquet Hall	2F, 5F	Buffet	1,200



Rolling Hills Hotel

CAPACITY
906 Participants

📍 290, Sicheong-ro, Hwalcho-ri, Namyang-eup, Hwaseong-si, Gyeonggi-do, Republic of Korea 🌟 4-star

☎ +82-31-268-1000 📠 +82-31-369-7534

🌐 www.rollinghills.co.kr 🖱



Hwaseong's 4-Star Hotel Close to Sea and Hot Spring

Rolling Hills Hotel is a 4-star hotel located near Hwaseong City Hall and Hyundai Kia Namyang Technology Research Center. The hotel contains 228 cozy rooms and 10 meeting spaces including a banquet hall to support successful hosting of large events. The hotel is known for providing excellent breakfast, dinner course and spa with dry therapy, accounting for its high number of return guests. Guests can try delectable dishes freshly cooked in an open kitchen while enjoying picturesque views from the restaurant window. Wolmun Hot Spring is 30 minutes away and other nearby attractions include Suwon Hwaseong Fortress and Jebudo Island.

DIMENSIONS & FACILITIES	Type	Location	Size		Capacity		
			Area(m ²)	Ceiling Height(m)	Theater	Classroom	Banquet
	Seminar Room A, B	B1	115	3	-	60	-
	Seminar Room E, F	B1	83	3	-	40	-
	Seminar Room C	B1	60	3	-	20	-
	Seminar Room D	B1	52	3	-	20	-
	Forum	B1	244	3	108	150	100
	Lean Burn	2F	112	2.4	56	32	-
	Theta	2F	112	2.4	56	32	-
	Grand Ballroom	2F	638	5.7	504	357	300

NUMBER OF ROOMS	Number of Rooms	Type						
		Superior King	Superior Twin	Deluxe King	Deluxe Twin	Family Twin	Studio Suite	Business Suite
	228	30	35	37	83	39	2	2

RESTAURANTS & BARS	Name	Location	Cuisine	Capacity
	Blue Sapphire	1F	-	246
	The Kitchen	1F	-	100
	The Lounge	1F	-	42
	The Bar	1F	-	104



Shilla Stay Dongtan

CAPACITY
64 Participants

📍 161, Nojak-ro, Hwaseong-si, Gyeonggi-do, Republic of Korea ★ 3-star

Integrated room reservation ☎ +82-2-2230-0700 ☎ +82-2-2230-0726 **Front office** ☎ +82-31-8036-9000

🌐 www.shillastay.com/dongtan 🖱



Guest-Oriented Business Hotel in Dongtan

Shilla Stay Dongtan is an upscale business hotel launched by Hotel Shilla. It is where Lei Jun, the chairman of Xiaomi, chose to stay when he visited Korea. There are around 600,000 businesses located in the city of Hwaseong and the hotel provides specialized services to cater to business needs. The hotel lobby features a communal table and comfortable sofa, providing space for brief meetings and personal tasks. There is also a meeting room equipped with an LCD projector and screen. The hotel provides beddings and amenities of a first-class hotel in every guest room. Subsidiary facilities include a business corner, coin-operated laundry, buffet restaurant, and lounge bar.

DIMENSIONS & FACILITIES

Type	Location	Size		Capacity		
		Area(m ²)	Ceiling Height(m)	Theater	Classroom	Banquet
Meeting Room (1+2+3)	7F	79	3	64	45	15
Meeting Room (1+2)	7F	53	3	40	27	21
Meeting Room 1	7F	26	3	24	-	15
Additional seminar rooms will be built in Jan~Feb, 2019						
Business Corner	1F					

NUMBER OF ROOMS

Number of Rooms	Type	
286	Standard	Deluxe
	143	143

RESTAURANTS & BARS

Name	Location	Cuisine	Capacity
Bar	1F	Drinks & Snacks	45
Café	7F	Casual Buffet	191

7F



Ibis Ambassador Suwon

CAPACITY
1,910 Participants

📍 132, Gwongwang-ro, Paldal-gu, Suwon-si, Gyeonggi-do, Republic of Korea 🌟 3-star

☎ +82-31-230-5000 📠 +82-31-230-5007

🌐 www.ibissuwon.com 🖱



Global Hotel Brand with Refined Services

Ibis Ambassador Suwon is a major international hotel located in the heart of Suwon's business district with easy access to the international airport and other cities in the province like Suwon, Pangyo, and Hwaseong. The hotel offers a variety of banquet spaces to accommodate events of all kinds. The Grand Ballroom can hold seminars and conventions of up to 500 people, while the hotel restaurant houses four private dining rooms for special occasions. Subsidiary facilities include a business corner, coin-operated laundry room, and vending machines for bathroom products. The hotel also has a duty-free shop for convenient shopping.

DIMENSIONS & FACILITIES	Type	Location	Size		Capacity		
			Area(m ²)	Ceiling Height(m)	Theater	Classroom	Banquet
	Cannes 1, 2	3F	360	2.7	230	180	150
	Montmartre 1, 2, 3	3F	640	2.7	400	250	300
	Nice 1, 2	6F	671	2.7	230	180	150
	Lyon	6F	367	2.7	400	250	300
	Versailles	15F	651	7.2	650	400	400

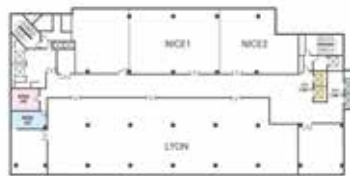
NUMBER OF ROOMS	Number of Rooms	Type			
	240	Standard Double	Standard Twin	Junior Suite	Ondol
		140	94	5	1

RESTAURANTS & BARS	Name	Location	Cuisine	Capacity
	Le Fontina	2F	International Buffet	330

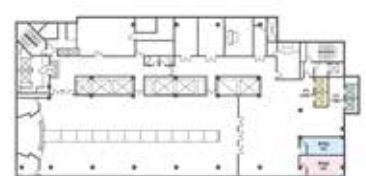
3F
Cannes, Montmartre



6F
Nice, Lyon



15F
Versailles



Hotel Prumir

CAPACITY
1,500 Participants

📍 480, Hyohaeng-ro, Hwaseong-si, Gyeonggi-do, Republic of Korea ★ 4-star

☎ +82-31-8020-0000 📠 +82-31-8020-0002 @ hotelprumir@hotelprumir.com

🌐 www.hotelprumir.com 🖱



Hwaseong's 4-Star Hotel Neighboring a World Heritage Site

Located next to the UNESCO World Heritage site in Hwaseong, Hotel Prumir is a 4-star hotel built on a propitious site determined by geomancy. It stands in harmony with Yungneung and Geolleung Royal Tombs (for Crown Prince Sado and King Jeongjo), as well as Yongjusa Temple. All of its 239 guestrooms face east and there are 5 banquet halls ready to hold international-scale events. The Grand Ballroom is used for hosting large banquets, exhibitions, and seminars, while the Onyx Room accommodates various small to medium sized events.

DIMENSIONS & FACILITIES

Type	Location	Size		Capacity		
		Area(m ²)	Ceiling Height(m)	Theater	Classroom	Banquet
Grand Ballroom	1F	600	4.6	550	432	350
SAPPHIRE HALL	B1F	250	4.2	250	168	150
TOPAZ HALL	B1F	210	4.2	200	135	110
AMBER ROOM	1F	180	2.9	200	135	100
ONYX ROOM	1F	105	2.9	100	72	60
SECRET GARDEN	3F	105	2.9	200	-	150

NUMBER OF ROOMS

Number of Rooms	Type								
	SUPERIOR Double	SUPERIOR Twin	Deluxe Double	Deluxe Twin	PREMIER DELUXE	ONDOL SUITE	JUNIOR SUITE	EXECUTIVE SUITE	PRUMIR SUITE
239	76	50	2	90	14	3	2	1	1

RESTAURANTS & BARS

Name	Location	Cuisine	Capacity
THE KITCHEN	B1F	Buffet Restaurant	316
BLANCA	1F	Lounge & Bistro	87
CLUB SECRET	1F	Wine Bar	-
LOLLYPOLLY	1F	Bakery	-



Hotel Square

CAPACITY
1,510 Participants

📍 81, Dongsan-ro, Danwon-gu, Ansan-si, Gyeonggi-do, Republic of Korea 🌟 3-star

☎ +82-31-490-2000 📠 +82-31-490-2125 @ rsvn@hotelsquare.co.kr

🌐 hotelsquare.co.kr 🖱



Bringing Together the Ansan Smart Hub, Travel, and Leisure

Hotel Square is a three-star hotel in Ansan, a city rich in natural resources and cultural diversity. The hotel is conveniently located near the international airport, Daebudo Island, Gungpyeonghang Port, and Reed Marsh Park. Ansan Smart Hub is home to some 17,000 businesses and it is Hotel Square where meetings and leisure come together for successful business results. The hotel offers 8 banquet halls, including the 400-seat Grand Ballroom and 7 small to medium sized halls, equipped with the latest meeting facilities. Other features include ondol (floor heating system) rooms and S Lounge, serving breakfast and lunch buffet.

DIMENSIONS & FACILITIES	Type	Location	Size		Capacity		
			Area(m ²)	Ceiling Height(m)	Theater	Classroom	Banquet
	CARNATION	2F	81.6	3.5	80	50	50
	COSMOS	2F	75.3	3.5	70	45	45
	JASMINE	2F	84.6	3.5	80	50	50
	LILAC	2F	86.6	3.5	80	50	50
	GRAND BALLROOM	2F	474.3	6.5	500	250	300
	ROSE	3F	170	3.5	250	180	120
	TULIP	3F	200	3.5	300	220	150
	LILY	3F	87.9	3.5	150	100	80

NUMBER OF ROOMS	Number of Rooms	Type							
		STANDARD DOUBLE	STANDARD TWIN	STANDARD ONDOL	DELUXE DOUBLE	DELUXE ONDOL	FAMILY SUITE	JUNIOR SUITE	DELUXE SUITE
	203	75	81	4	27	2	11	1	1

RESTAURANTS & BARS	Name	Location	Cuisine	Capacity
	S Lounge	1F	Lunch Box Korean Food Western Food	80 70 150



Landmark Hotel

CAPACITY
100 Participants

📍 1591, Bongyeong-ro, Yeongtong-gu, Suwon-si, Gyeonggi-do, Republic of Korea 🌟 2-star

☎ +82-31-202-3773 📠 +82-31-202-5405

🌐 www.landmarkhotel1.com 🖱



Parkside Hotel Conveniently Located in New Town

Situated in Yeongtong new town area of Suwon, Landmark Hotel is a 2-star hotel neighboring Cheongmyeongsan Mountain and Yeongtong Bandal Park. It is a stone's throw away from Yeongtong Station (Subway Bundang Line), allowing guests to enjoy a mix of downtown and nature. The hotel is frequented by business travelers, courtesy of its proximity to Samsung Digital City. It offers 104 spacious and comfortable guestrooms, meeting rooms and a business center. All guestrooms have wireless internet access and travel adapters are available for international guests. Large supermarkets and other convenience facilities are found nearby.

DIMENSIONS & FACILITIES

Type	Location	Size		Capacity	
		Area(m ²)	Ceiling Height(m)	Classroom	Banquet
ASTA Restaurant	B1F	293	3	-	80
Meeting Room	B1F	40	3	20	-

NUMBER OF ROOMS

Number of Rooms	Type						
	STANDARD DOUBLE	STANDARD TWIN	DELUXE DOUBLE	DELUXE TWIN	DUPLEX	SUITE DOUBLE	SUITE TWIN
104	25	28	33	10	3	3	2

RESTAURANTS & BARS

Name	Location	Cuisine	Capacity
ASTA Restaurant	B1F	Steak & Buffet	80



Value Hotel Suwon

CAPACITY
240 Participants

📍 299, Hyowon-ro, Paldal-gu, Suwon-si, Gyeonggi-do, Republic of Korea

☎ +82-31-230-6000 📠 +82-31-230-6001

🌐 www.valuehighend.com 🖱



High-class Business Space in the Center of Suwon

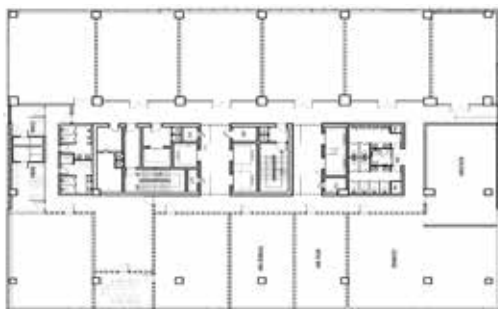
Value Hotel Suwon, a hotel brand by the Vantage Hospitality Group, is the largest business hotel in Gyeonggi Province. It is located in Ingye-dong, known as Suwon's center of administration, finance, and business. The airport limousine to and from the Incheon International Airport stops at the hotel. It contains 300 guestrooms, coin-operated laundry, a fitness center, and a large banquet hall for various occasions. The hotel restaurant "Value Plate" features a special guest room for smaller size events. The open-air terrace on the 9th floor is the perfect spot to unwind and take in the view of downtown Suwon.

DIMENSIONS & FACILITIES	Type	Location	Size		Capacity		
			Area(m ²)	Ceiling Height(m)	Theater	Classroom	Banquet
BQ ROOM		6F	330.57	3.9	120	120	130
Meeting Room		6F	49.58	3	30	30	-

NUMBER OF ROOMS	Number of Rooms		Type		
	300	Superior	Deluxe		Jr. Suite
		118	154		28

RESTAURANTS & BARS	Name		Location	Cuisine	Capacity
	Value plate		6F	Buffet	130
	Banquet		6F	Buffet	130

6F
BQ ROOM, Meeting Room



Hotel Vella Suite

CAPACITY
210 Participants

📍 18-15, Gwongwang-ro 180beon-gil, Paldal-gu, Suwon-si, Gyeonggi-do, Republic of Korea

☎ +82-31-231-2121 📠 +82-31-231-2299 @ vellasuite@vellasuitehotel.co.kr

🌐 vellasuitehotel.co.kr 🖱



Haven for Relaxation in the Heart of Suwon City

Vella Suite Hotel Suwon is a relaxing haven, located in the heart of Suwon's business, shopping and sightseeing attractions. Its facilities include 99 tastefully furnished rooms, a business center for work efficiency and a women-only floor. Also it is located at the important traffic hub that it takes 80 minutes from Incheon International Airport by limousine bus and one minute from Suwon City Hall subway station. It is near a department store, a large shopping mall, and Na Hye-seok Street, where you can enjoy a variety of foods, which is just 3 minutes away. Also it is close to Suwon Hwaseong Fortress, a UNESCO World Heritage Site.

DIMENSION & FACILITIES

Type	Location	Size		Capacity
		Area(m ²)	Ceiling Height(m)	Banquet
Business center	2F	12	-	10
Small banquet hall	B1	132	-	60
Restaurant	2F	176	-	100

NUMBER OF ROOMS

Number of Rooms	Type				
99	Business single	Standard double	Standard Twin	Family Twin	Junior Sweet
	7	36	33	14	8



Suwon Silkroad Hotel

CAPACITY
150 Participants

📍 1022, Ingye-dong, Paldal-gu, Suwon-si, Gyeonggi-do, Republic of Korea

☎ +82-31-232-9981 📠 +82-31-232-9982 @ hotelsilkroad@hanmail.net

🌐 www.hotelsilkroad.co.kr 🖱



Best Service for Business Travelers

After a remodeling in November 2017, Suwon Silkroad Hotel offers relaxation and the best service experience in a more spacious and pleasant ambience. It provides a total of 130 comfortable rooms, Incheon airport pick-up service and laundry service. The hotel also has a business center with the Internet, a conference room equipped with a beam projector, a meeting room, a banquet hall, a fitness center and a screen golf course. It is close to Suwon City Hall, Gyeonggi Arts Center, Hyowon Park and Suwon Bridge which are great places for walking.

DIMENSION & FACILITIES

Type	Location	Size		Capacity		
		Area(m ²)	Ceiling Height(m)	Theater	Classroom	Banquet
Conference room	B1	535	4	150	150	150

NUMBER OF ROOMS

Number of Rooms	Type				
	Superior Double	Superior Twin	Junior Suite	Royal Suite	Family room
130	50	50	15	5	10

RESTAURANTS & BARS

Name	Location	Cuisine	Capacity
Silkroad Restaurant	2F	-	150
Coffee road	1F	-	30



The Koryo Hotel

CAPACITY
516 Participants

📍 66, Gilju-ro, Bucheon-si, Gyeonggi-do, Republic of Korea ★ 4-star

☎ +82-32-329-0001 📠 +82-32-324-0648 @ roomrsvn@hotelkoryo.net

🌐 www.hotelkoryo.net 🖱



The Only Luxury Hotel in Bucheon with City Overview

Situated in Sangdong, the center of arts, culture and business of Bucheon, Koryo Hotel is a luxury hotel close to Lake Park and other major attractions. Of the 127 rooms, the Presidential Suite is ideal for important business meetings as it accommodates a meeting room, a VIP reception room and an attendant room. It also houses various banquet halls, seminar rooms, restaurants, a business center, and fitness facilities. It provides Incheon / Gimpo airport pick-up service for long-term foreign guests. Nearby tourist attractions include Aiins World theme park and Hanok (traditional Korean house) Village.

DIMENSION & FACILITIES

Type	Location	Size		Capacity		
		Area(m ²)	Ceiling Height(m)	Theater	Classroom	Banquet
Diamond Room	2F	273.1	3.5	-	-	160
Coral Room	3F	22.5	3.5	120	60	48
Grand Ball Room	3F	343.22	3.5	270	180	180
Crystal Room	4F	163.8	3.2	120	80	80
Hallasan Room	5F	41.2	3.0	30	18	12
Baekdusan Room	5F	36.7	3.0	30	18	12

NUMBER OF ROOMS

Number of Rooms	Type							
	Standard Double	Standard Twin	Superior Double	Deluxe Double	Deluxe Twin	Premior Double	Royal Suite	Presidential Suite
127	29	36	16	23	8	11	3	1

RESTAURANTS & BARS

Name	Location	Cuisine	Capacity
Besito	1F	Coffee&Tea	64
		Korean A La Carte	64
		Western A La Carte	64
Terrace	2F	Korean Table d'hote	40



Ramada Pyeongtaek Hotel

CAPACITY
595 Participants

📍 3-24, Pyeongtaekhang-ro 184beon-gil, Poseung-eup, Pyeongtaek-si, Gyeonggi-do, Republic of Korea

☎ +82-31-220-7800 📠 +82-31-220-7810 @ rsvn@ramadapyeongtaek.com

🌐 www.ramadapyeongtaek.com 🖱



Premium Hotel with Beautiful Night View of Pyeongtaekhang Port and Seohaedaegyo Bridge

Part of Wyndham Hotel Group, Ramada Pyeongtaek Hotel is located in the heart of Pyeongtaek, the city of new growth and economic development. It has 4 floors underground, 17 floors above ground and a total 476 rooms which guests can choose various types of concept rooms. This includes a cozy ondol (traditional floor heating system) room and a Superior Corner Double room where guests can enjoy the night view of the Yellow Sea. The hotel has a large banquet hall for up to 300 people, a business center and a fitness facility, and the 17th floor rooftop terrace offers a beautiful view. Also it is located near Pyeongtaek Tourist Complex where visitors can enjoy Asan Spavis, a hot spring theme park, and water sports facilities.

DIMENSION & FACILITIES

Type	Location	Size		Capacity	
		Area(m ²)	Ceiling Height(m)	Classroom	Banquet
Emerald	2F	454	4	120	90
Diamond	2F	1,028	4	320	300
Ruby	3F	-	-	30	16
Topaz	3F	-	-	30	16
Sky Lounge	16F	400	4	-	95

NUMBER OF ROOMS

Number of Rooms	Type								
	Standard Double	Standard Twin	Ondol	Deluxe Double	Triple	Deluxe Twin	Harbor Family Twin	Superior Corner Double	Harbor Suite
476	129	99	32	26	76	70	18	24	2

RESTAURANTS & BARS

Name	Location	Cuisine	Capacity
bordeaux	2F	Buffet	190



La Vie D'or Resort

CAPACITY
340 Participants

📍 286, Seja-ro, Botong-ri, Jeongnam-myeon, Hwaseong-si, Gyeonggi-do, Republic of Korea

☎ +82-31-352-7150 📠 +82-31-352-4618

🌐 www.laviedor.com 🖱



European-style Resort with Top-notch Services

Located 30 minutes from Seoul, La Vie D'or Resort offers the largest convention facilities in southern Gyeonggi Province. The resort features SINTEX's convention space for up to 2,500 people and a 9-hole public golf course. The 1,200-person capacity Grand Ballroom and various types of seminar rooms are equipped with the latest sound and lighting systems. Other features include a spacious lobby that can be used to hold events and exhibitions, an outdoor garden available for banquets, and restaurants with private rooms. In addition to its 241 guestrooms offering expansive views, the resort has a fitness center, golf driving range, and an indoor swimming pool. The nearby Mulhyanggi Arboretum is a great place for a stroll.

DIMENSIONS & FACILITIES	Type	Location	Size		Capacity
			Area(m ²)	Ceiling Height(m)	Classroom
	Large Banquet Hall	2F	353	4.2	180
	ROOM 7	3F	89	-	40
	ROOM 8	3F	41	-	15
	ROOM 9	B1F	36	-	15
	ROOM 10	B1F	99	-	30
	ROOM 11	B1F	133	-	60

NUMBER OF ROOMS	Number of Rooms	Type					
		Superior	Ondol	Deluxe	Junior Suite	Executive Suite	Parkhill Suite
	241	26	150	14	31	18	1

RESTAURANTS & BARS	Name	Location	Cuisine	Capacity
	Bistro	1F	Korean, Western	160
	Castle	2F	Coffee, Tea, Desserts	60
	Sports Bar	-	-	-
	Petrus	2F	Chinese	90
	Zooka	1F	Drinks & Snacks	Hall 40 / Room 8



Gyeonggi-do Youth Center

CAPACITY
406 Participants

📍 255, Seongam-ro, Danwon-gu, Ansan-si, Gyeonggi-do, Republic of Korea

☎ +82-32-886-6900 📠 +82-32-886-2917 @ ggyc@ggyc.kr

🌐 www.ggyc.kr 🖱



Healing and Leisure in Nature of Daebudo Island

Gyeonggi-do Youth Training Center is located on Daebudo Island with mountains, sea, and mud flats. It is a training facility established by Gyeonggi Province and it has customized facilities for workshops, seminars, and other group events, and offers various experience programs. In addition, it accommodates a 400-seat auditorium, an indoor gymnasium and a seminar room for up to 500 people, an outdoor swimming pool, an artificial turf stadium at international standards, and a camping ground. It offers a variety of training, including one-night, two-day training programs for students as well as executives, and two-night, three-day programs for corporate training. Furthermore, sport and leisure activities are available such as marine training courses: exploring mudflats and sea rafting, beach hiking and artificial rock climbing.

DIMENSION & FACILITIES	Type	Location	Size		Capacity		
			Area(m ²)	Ceiling Height(m)	Theater	Classroom	Banquet
	Large Auditorium	3F	724	7	400	-	-
	Seminar Room	2F	154.65	3.5	-	120	-
	Seminar Room (Medium)	2F	98.25	3.5	-	60	-
	Seminar Room (Medium)	2F	98.25	3.5	-	50	-
	Gymnasium	1F	864	10	-	-	500
	Swimming Pool	1F	1.932	-	-	100	-
	Indoor Hall	1F	187.20	3.5	-	100	-
	Artificial Turf	1F	10.071	3.0	-	-	1,000
	Mudflats	-	-	-	-	-	1,000

NUMBER OF ROOMS	Number of Rooms		Type				
			Taeyang Hall (10 persons)	Bada Hall (5 persons)	Bada Hall (6 persons)	Bada Hall (7 persons)	Bada Hall (8 persons)
47			25	4	7	8	1
							2

RESTAURANTS & BARS	Name		Location		Cuisine		Capacity	
	Restaurant		1F		Korean Food, Western Food		250	



Suwon Hwaseong Fortress

📍 11, Haenggung-ro, Paldal-gu, Suwon-si, Gyeonggi-do, Republic of Korea

☎ +82-31-290-3600 📠 +82-31-290-3620 🌐 www.swcf.or.kr 🖱



Unique Structure in Korea's History of Architecture

Suwon Hwaseong Fortress, designated as a UNESCO World Cultural Heritage, is a majestic fortress that is considered the crown jewel of the Joseon Dynasty's fortress construction. It was built by King Jeongjo in his aspiration for national prosperity and military power. A variety of events are held on the fortress grounds, such as trying on royal garments, practicing archery, and martial arts performances. Visitors to the fortress can also go on a hot air balloon ride to enjoy the night view of the downtown. Other recommended experiences include night trekking along the fortress trails and visiting the famous chicken alley in Suwon.

Gwangmyeong Cave

📍 142, Gahak-ro 85beon-gil, Gwangmyeong-si, Gyeonggi-do, Republic of Korea

☎ +82-70-4277-8902, +82-2-2680-6550 📠 +82-2-2680-6677 🌐 www.gm.go.kr/cv/index.do 📍



Gold Mine full of Culture, Art, and Fantasy

Dubbed as the “miracle of an abandoned mine,” Gwangmyeong Cave is the only cave theme park in the metropolitan cities. With the cave’s temperature remaining at a cool 12 degrees Celsius throughout the year, the place offers an excellent summer retreat. The cave is full of interesting attractions, including the Plant Factory, Aqua World, Golden Paths, Golden Waterfall, and a giant mystical dragon installation. Located near KTX Gwangmyeong Station, the cave is easily accessed from Seoul and Incheon International Airport.

DIMENSIONS & FACILITIES

Type	Size		Capacity
	Area(m ²)	Ceiling Height(m)	Theater
Cave Art Center	1,315	10	350

📍 181, Gwangmyeong-ro, Gwacheon-si, Gyeonggi-do, Republic of Korea
☎ +82-2-509-6000 📠 +82-2-509-6192 @ cjd0816@seoul.land.co.kr 🌐 www.seoul.land.co.kr 📱



Korea's First Theme Park with Cutting-Edge Attractions

Seoul Land is an amusement park located inside Seoul Grand Park that features various fun facilities, a children's zoo, and a museum. Seoul Land hosts an array of seasonal festivals and a spectacular laser show in the evening. The park also offers corporate team building survival games.

DIMENSIONS & FACILITIES

Type	Location	Size		Capacity		
		Area(m ²)	Ceiling Height(m)	Theater	Classroom	Banquet
Rose Hill	2F~3F	288	7	-	-	300
Event Hall	1F	140	3.5	1,200	-	50
Samchulli Theater	-	-	-	3,000	-	-
Log Stage	-	-	-	400	-	-
Earth-A-Star Hall	-	-	-	-	450	-
World Plaza Hall	4F	140	3.5	-	100	50



Woongjin Playdoci

📍 2, Jomaru-ro, Bucheon-si, Gyeonggi-do, Republic of Korea

☎ +82-1577-5773 📠 +82-32-310-8003 @ picphoto@playdoci.com 🌐 www.playdoci.com 📱



Theme park with All-Year-Round Water Park, Ski and Golf

It is an indoor theme park located in Bucheon, Gyeonggi Province, which is about 40 minutes away from Incheon International Airport. It offers both an exciting and a relaxing experience, allowing visitors to enjoy all-year-round warm water park and spa facilities called Spa Santé. It is an optimized destination for sports holidays as visitors can enjoy indoor skiing and snowboarding regardless of weather conditions. Also it contains a 360-yard golf driving range with 200 tee stations and restaurants for large groups of visitors. Various events and programs are offered in each season; flower festival in spring, aqua festival in summer, Thanksgiving and Halloween festivals in autumn and outdoor snowflake spa in winter.



Aiins World

📍 1, Doyak-ro, Bucheon-si, Gyeonggi-do, Republic of Korea

☎ +82-32 320-6000 📠 +82-32-326-6009 @ bill1@aiinsworld.com 🌐 www.aiinsworld.com 📍



Aiins World is a theme park displaying miniature recreations of famous cultural heritages and landmarks from around the world. Visitors would feel as if they are in Gulliver's Lilliput as the miniatures of architectures from 25 countries have been so finely crafted with detail by WonderWorks, a well-known American special effects company. In addition, it offers a spectacular night event called World Nightview Fantasy Lighting Festival.

Bucheon Robo Park

📍 655, Pyeongcheon-ro, Bucheon-si, Gyeonggi-do, Republic of Korea

☎ +82-70-7094-5479 📠 +82-32-321-1748 @ chassuk@naver.com 🌐 www.robotpark.org 📍



At this robot exhibition center, visitors can see and interact with future AI robots. On display are a humanoid transformer robot with 60 joints and robots that can climb stairs, play musical instruments, or do sports. Visitors can have a go at controlling the robots at the experience zone.

DIMENSIONS & FACILITIES

Type	Location	Size		Capacity	
		Area(m ²)	Ceiling Height(m)	Theater	Banquet
Exhibition Hall & Education Center	1F~3F	2,812	-	40	80

SIGHTSEEING &
HANDS-ON EXPERIENCE

Jebudo Island

📍 Seosin-myeon, Hwaseong-si, Gyeonggi-do, Republic of Korea ☎ +82-1577-4200



Jebudo is an island where the sea parts twice a day during the low tide. The island offers a pleasant coastal walking path flanked by fantastic rock formations. Maebawi (falcon rock) on the southern tip of the island is a popular sunset spot and the west coast beach is a noted mud flat experience site.

SIGHTSEEING &
HANDS-ON EXPERIENCE

Ansan Reed Marsh Park

📍 820-116, Hae-an-ro, Sangnok-gu, Ansan-si, Gyeonggi-do, Republic of Korea

☎ +82-31-481-3810 🌐 wetland.iansan.net 🖱



Ansan Reed Marsh Park is an ecological park, where visitors can take in nature's serene beauty and learn about the history of Sihwaho Lake that became a haven for migratory birds. Course A features wildflower paths, while Course B contains an artificial island and bird watching decks.

📍 129, Samsung-ro, Yeongtong-gu, Suwon-si, Gyeonggi-do, Republic of Korea

☎ +82-31-200-3113 @ sim.sec@samsung.com 🌐 www.samsunginnovationmuseum.com 🖱



The museum, operated by the global corporation Samsung, sheds light on the history of electronic industry and innovations ranging from invention of electricity to latest smart devices. Exhibits feature how electronic devices and cutting-edge technology has changed our lives. Visitors can also experience the latest Smart Home technology led by Samsung Electronics.

DIMENSIONS & FACILITIES

Type	Location	Size		Capacity
		Area(m ²)	Ceiling Height(m)	
Hall 1: The Era of Inventors	5F	2,630	5.2	80
Hall 2: The Era of Corporate Innovation	3F	2,610	4	100
Hall 3: The Era of Creation	2F	2,620	3.5	80
History of Samsung	1F	2,680	3.5	40

Gyeonggi-Do Suwon Worldcup Stadium Foundation

📍 310, Worldcup-ro, Paldal-gu, Suwon-si, Gyeonggi-do, Republic of Korea

☎ +82-31-202-2002 📠 +82-31-259-2019, 2059 🌐 suwonworldcup.gg.go.kr 🖱



This world-class stadium successfully hosted four major FIFA events and World Cup matches during the 2002 FIFA World Cup Korea/Japan. The stadium contains WI Convention, consisting of the 320-seat I Hall and a 1000-seat capacity convention hall. The Auxiliary Stadium, Artificial Stadium, and Futsal Stadium are available for venue rental, as well as corporate and cultural events.

DIMENSIONS & FACILITIES

Type	Area(m ²)	Capacity(Audience)
Main Stadium	8,778	43,168
Auxiliary Stadium	16,688 (2 fields)	319
Artificial Stadium	16,573 (2 fields)	256
Futsal Stadium	8,214 (6 fields)	-
World Cup Sports Center	19,320 (4 ground, 2 sub-ground levels)	-

VIEWING &
HANDS-ON EXPERIENCE

Korea Manhwa Museum

📍 1, Gilju-ro, Bucheon-si, Gyeonggi-do, Republic of Korea

☎ +82-32-310-3090~1 📠 +82-32-661-3744 🌐 komacon.kr/comicsmuseum 📍



Located in Bucheon, the Korea Manhwa Museum is a cultural venue dedicated to comics and cartoon arts. The museum showcases the 100-year history of Korean cartoons, as well as a wide range of fun hands-on activities. Notable attractions include a permanent exhibition featuring popular cartoon characters and a 4D adventure ride with movable seats.

DIMENSIONS &
FACILITIES

Type	Location	Size		Capacity	
		Area(m ²)	Ceiling Height(m)	Theater	Classroom
Animation Cinema	1F	614.65	8.50	386	-
Experience Educational Room	2F	67.31	3.00	-	30
Creative Educational Room	2F	91.87	3.00	-	50
4D Cinema	3F	118.10	6.60	60	-

VIEWING &
HANDS-ON EXPERIENCE

Glass Island

📍 254, Buheung-ro, Danwon-gu, Ansan-si, Gyeonggi-do, Republic of Korea

☎ +82-32-885-6262 📠 +82-32-888-6264 🌐 www.glassisland.co.kr 📍



Glass Island is a museum dedicated to glass crafts on Daebudo, the largest island on the west coast of Korea. In addition to showcasing fascinating glass artworks, the museum allows visitors to see the making process of glass crafts and experience making their own glass cups.

Uiwang Rail Bike

📍 209, Wangsongmotdong-ro, Uiwang-si, Gyeonggi-do, Republic of Korea

☎ +82-31-462-3001 📠 +82-31-462-3091 @ kuwrailpark@naver.com 🌐 www.uwrailpark.co.kr 📱



The rail bike in Uiwang City circulates along Wangsong Lake, allowing visitors to enjoy scenic lakeside vistas throughout the year. Various themed sections along the course, such as pop-up book zone, speed zone, and photo zone, add fun to the ride. The Railroad Museum is also located nearby.

Gyeonggi Arts Center

📍 20, Hyowon-ro 307beon-gil, Paldal-gu, Suwon-si, Gyeonggi-do, Republic of Korea

☎ +82-31-230-3200 📠 +82-31-230-3239 @ webmaster@ggac.or.kr 🌐 www.ggac.or.kr 📱



Gyeonggi Arts Center, opened in June 1991, is the leading performing arts center in Gyeonggi Province. It has a grand theater with 1,556 seats, a small theater with 502 seats, an outdoor theater, a gallery and a convention center. It offers performances by the Gyeonggi Provincial Theater Company, as well as seasonal performances, and various festivals every year.

DIMENSION & FACILITIES

Type	Location	Size		Capacity
		Area(m ²)	Ceiling Height(m)	
Grand Theater	1F	13,295	21	1,556
Small Theater		3,157	12	502
Outdoor Theater		620	-	192

VIEWING &
HANDS-ON EXPERIENCE

Pyeongtaek Gyodong Ferry Co. Ltd.

📍 2FL Pyeongtaek Ferry Terminal, 75, Pyeongtaekhangman-gil, Poseung-eup, Pyeongtaek-si, Gyeonggi-do, Republic of Korea
 ☎ +82-31-684-5999 📠 +82-31-684-5933 @ passenger@jiaodongferry.com 🌐 www.pjferry.co.kr 📱



Pyeongtaek Gyongdong Ferry Co., Ltd. is a subsidiary of Weihai Port Group, the largest state-owned enterprise in Shandong Province, China, and operates a ferry service between Weihai, China and Pyeongtaek, Korea. The 33,000-ton ferry, 'New Grand Peace,' runs three times per week on the Pyeongtaek- Weihai route, and the sailing time is about 13 hours. It accommodates up to 880 passengers, a cargo with a capacity of 316TEUs, and its facilities include a duty-free shop, restaurants, convenience stores, a movie theater, a mahjong room and a karaoke.

NUMBER OF
ROOMS

Capacity	Type						
	VIP	S-RYL	RYL	S-DLX	DLX	S-FST	FST
880	4	4	36	46	320	436	34

HANDS-ON EXPERIENCE

Suwon Traditional Culture Center

📍 893, Jeongjo-ro, Paldal-gu, Suwon-si, Gyeonggi-do, Republic of Korea
 ☎ +82-31-247-5615 📠 +82-31-247-3768



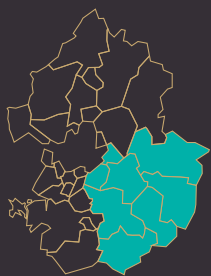
Located near Hwaseong Haenggung Palace, Suwon Traditional Culture Center offers opportunities to experience traditional Korean culture in a quaint hanok. Visitors can gain an understanding of the traditional food culture and take part in various hands-on programs like making Korean snacks and wearing hanbok.

DIMENSIONS &
FACILITIES

Type	Location	Size		Capacity
		Area(m ²)	Ceiling Height(m)	Classroom
Education Room	1F	113	-	48
Special Exhibition Room	1F	76.5	-	20

SOUTH EASTERN AREA

Incheon



Seoul

Hanam

146_Yangpyeong
Forest Pension

138_Hanwha Resort Yangpyeong

•144_Ocher Village

116_The Bloomvista

Yangpyeong-gun

120_Daemyung Resort Yangpyeong

122_Cherville Paradise Institute

124_Adela Hanok

Seongnam

126_Courtyard by Marriott Seoul Pangyo

Gwangju

•142_Konjiam Resort & Ski Course

132_Namhangang Sunvalley Hotel

Yongin

128_The soom Forest

134_Ramada Yongin Hotel

•130_Yongin Central CO'OP Hotel

136_Yangji Pine Resort

Yeoju

Icheon

148_Sunning Leadership Center

140_Hanwha Resort
Yongin Besançon

Anseong

The Bloomvista

CAPACITY
939 Participants

📍 316, Gangnam-ro, Gangha-myeon, Yangpyeong-gun, Gyeonggi-do, Republic of Korea

☎ +82-31-770-8888 📠 +82-31-770-8899

🌐 www.bloomvista.co.kr 🖱



Integration of Leisurely Relaxation and Top-notch Educational Facilities

The Bloomvista is the only hotel and conference complex to be located within a nature preservation area. It has 292 guestrooms of 7 different types, each offering gorgeous year-round views of the surrounding nature. In addition, a wide range of meeting rooms and banquet halls are available to ensure successful business events. Notable facilities include the Grand Ballroom that can accommodate up to 400 people, Bloomvista Hall with Namhangang River views on three sides, and Honors Room equipped with video conferencing capabilities.

DIMENSION & FACILITIES

Type	Location	Size		Capacity		
		Area(m ²)	Ceiling Height(m)	Theater	Classroom	Banquet
Grandballroom	D Bldg. 2F	628	-	-	400	300
Asan Hall / Geumgang Hall	C Bldg. 1F	394	-	-	180	-
Bloomvista Hall	A Bldg. 5F	373	-	-	180	-
Honors Room	C Bldg. B1F	175	-	54	-	-
Seminar Room (medium)	A Bldg. 1~4F	125~165	-	-	50	-
Seminar Room (small)	A Bldg. 1~4F	66~112	-	-	30	-
Main Conference Room	C Bldg. B1F	75	-	-	30	-
Divisible Conference Room	A, B, D Bldg.	26~46	-	-	15	-





NUMBER OF ROOMS

Number of Rooms	Type								
	Standard Twin	Standard Double	Deluxe Twin	Family Twin	Character Room (3 types)	Grand Deluxe	Junior Suit	Business Suite	Penthouse
292	64	12	96	96	18	2	2	1	1



RESTAURANTS & BARS

Name	Location	Cuisine	Capacity
Sky Lounge	B Bldg. 15F	Breakfast buffet, Lunch/Dinner (Korean/Western), A la carte menu, Tea & Beverages	140
Bistro B	D Bldg. B1F	Korean Food, Western Food	390
Cafe	C Bldg. 1F	Coffee & Tea, Fresh juice, Snacks	50

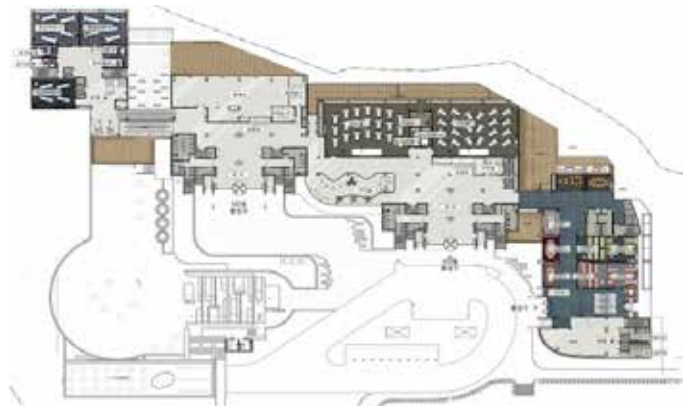
The Bloomvista houses three restaurants and various convenience facilities. The breakfast buffet features both Asian and Western cuisine and special banquet menus are available for group guests. Guests can enjoy exquisite night views of Namhangang River while dining at the Sky Lounge on the top floor. Other facilities include a 9-hole golf putting course, climbing site, fitness club, and well-kept walking paths.

BLOOMVISTA

B1F



1F

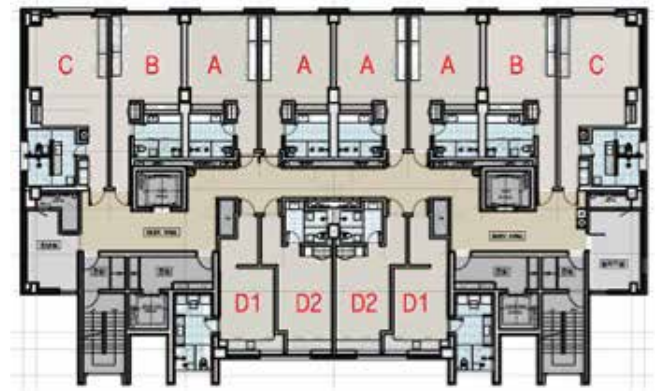


HOTEL B

Odd Number Floor



Even Number Floor

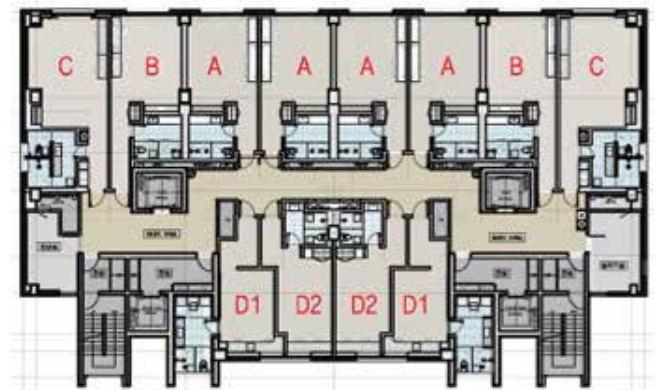


HOTEL C

Odd Number Floor



Even Number Floor



Daemyung Resort Yangpyeong

CAPACITY
1,130 Participants

📍 55, Sinnae-gil 7beon-gil, Gongse-ri, Gaegun-myeon, Yangpyeong-gun, Gyeonggi-do, Republic of Korea

☎ +82-2-2222-8964~5 📠 +82-2-2222-8959

🌐 www.daemyungresort.com 🖱



Suburban Healing Resort by Namhangang River

Located next to the beautiful Namhangang River, Daemyung Resort Yangpyeong is a leisure and culture venue optimized for business meetings and banquets. The 450-person capacity main banquet hall is fit to host various events from international conferences to corporate trainings, and receptions. Catering to smaller events, the Orange Box is conveniently equipped with meeting rooms, mini bars and even bedrooms and balconies. The resort provides 198 guestrooms of 3 different types and over 20 subsidiary facilities, including 6 banquet halls, grass field used as a recreation area, karaoke room, and bowling alleys.

DIMENSIONS & FACILITIES	Type	Location	Size		Capacity		
			Area(m ²)	Ceiling Height(m)	Theater	Classroom	Banquet
	Main building						
	Dongbae k	B1F	135	2.8	80	60	50
	Baekhap	B1F	66	2.8	100	70	60
	Moran	B1F	39	2.8	30	20	-
	Grandballroom	lobby	406	4.5	450	300	250
	Jangmi	2F	112	2.3	70	50	40
	Orange Box	8F	171	2.3	Buzz Session Room (20 fixed seats)		
	Daemyung						
Mindeulle	1F	390	2.9	200	150	120	
Cosmos	2F	390	3.8	200	150	120	

NUMBER OF ROOMS	Number of Rooms	Type		
		Family	Suite	Gold Suite
	191	77	111	3

RESTAURANTS & BARS	Name	Location	Cuisine	Capacity
	Dayeon	B1F	Korean Restaurant	280
	Patio	1F	Italian Restaurant	80
	Self BBQ Zone	outside	Self BBQ	212



Chereville Paradise Institute

CAPACITY
633 Participants

📍 389-2, Gongse-ri, Gaegun-myeon, Yangpyeong-gun, Gyeonggi-do, Republic of Korea

☎ +82-31-774-4101~3 📠 +82-31-772-4767

🌐 www.cherevillehotel.com 🖱 www.cherevilletrain.com 🖱



Leisurely Meetings and Healing Amid Beautiful Natural Scenery

Located in Yangpyeong, Chereville Paradise is a resort-type training institute that incorporates meeting facilities, hot springs, and lodging. The guestrooms combine the benefits of both hotel and condominium. The picturesque outdoor garden provides three spaces that can accommodate banquets or events of up to 300 guests. As for indoor facilities, there are various sized halls for 30 to 250 people, catering to large-scale events, as well as small group seminars. The lawn plaza and the walking paths offer relaxation away from the hustle and bustle of the city. In addition, Chereville Hotel's sulfur and open-air hot springs are popular places for relaxation and refreshment.

DIMENSIONS & FACILITIES	Type	Location	Size		Capacity		
			Area(m²)	Ceiling Height(m)	Theater	Classroom	Banquet
	Main building						
	Emerald Hall	1F	-	-	120	100	80
	Diamond Hall	2F	-	-	-	27	-
	Annex						
	Crystal Hall	1F	-	-	120	100	80
	Training building						
	VIP Hall	1F	-	-	30	20	20
	Paradise Hall	2F	-	-	300	250	200
Ruby Hall	2F	-	-	36	30	30	

NUMBER OF ROOMS	Number of Rooms	Type				
		Royal Suite room	Deluxe Suite room	Standard Grand room	Standard Korean room	Family Condominium
	68	2	5	21	26	7
						7

RESTAURANTS & BARS	Name	Location	Cuisine	Capacity
	Migayeon	1F	Korean, Western	220
	Chereville Banquet	Garden	BBQ, Korean, Buffet	150
	Lawn Plaza	Garden	BBQ, Korean, Buffet	300
	Cafeteria	Terrace	Western, Drinks, Snacks	100



Adela Hanok

CAPACITY
100 Participants

📍 49, Gongseomul-gil, Gaegun-myeon, Yangpyeong-gun, Gyeonggi-do, Republic of Korea

☎ +82-31-772-1908 📠 +82-31-772-1908

🌐 www.아델라한옥.com 🖱



Unique Meeting Space in a Traditional Setting

Adela Hanok is a unique cultural complex offering guests the opportunity to experience hanok, or traditional Korean house. Adela, meaning “elegant” and “noble,” is a perfect venue for important guests and special celebrations. The complex consists of five quaint hanoks that blend in beautifully with the natural surroundings. On-site facilities include a seminar room, a banquet hall, three houses for accommodation, and an extensive grass square with a barbecue area. The interior of each facility features traditional elegance along with modern conveniences, making Adela Hanok a truly special MICE venue.

DIMENSIONS & FACILITIES	Type	Location	Size		Capacity		
			Area(m ²)	Ceiling Height(m)	Theater	Classroom	Banquet
	Seminar room	1F	60	-	100	100	100

NUMBER OF ROOMS	Number of Rooms	Type		
	13	Sun Room	Moon Room	Star Room
		4	5	4

RESTAURANTS & BARS	Name	Location	Cuisine	Capacity
	Banquet hall	1F	BBQ	100



Courtyard by Marriott Seoul Pangyo

CAPACITY
262 Participants

📍 12, Pangyoyeok-ro 192beon-gil, Bundang-gu, Seongnam-si, Gyeonggi-do, Republic of Korea ★ 4-star

☎ +82-31-8060-2000 📠 +82-31-8060-2007

🌐 www.courtyardpangyo.com 🖱️ 🌐 www.marriott.com/selpn 🖱️



Sophisticated Business Hotel in Pangyo Techno Valley

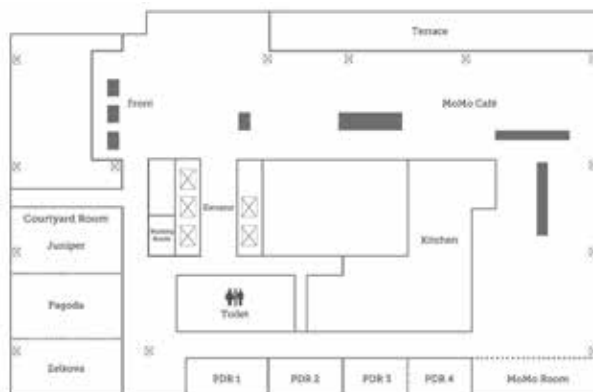
Courtyard by Marriott Seoul Pangyo is the first Marriott-branded business hotel in Pangyo. It provides an efficient one-stop service with 282 cozy guestrooms, 7 multi-functional meeting rooms, restaurants, and a bar. Other facilities include a concierge desk, an executive lounge, and four special rooms for private business meetings. The all-day-dining restaurant serves daily international buffet breakfast. The hotel is conveniently located in the heart of Pangyo Techno Valley, known as Korea's emerging IT business hub. Gangnam Station can be reached within 16 minutes and Pangyo Station is only a 3-minute walk away. Hyundai Department Store and Avenue France Shopping Mall are located close by.

DIMENSIONS & FACILITIES	Type	Location	Size		Capacity		
			Area(m ²)	Ceiling Height(m)	Theater	Classroom	Banquet
	Courtyard Room	8F	151.91	3.3	132	90	80
	Zelkova Room	8F	48.98	3.3	30	24	20
	Pagoda Room	8F	52.05	3.3	30	24	20
	Juniper Room	8F	50.88	3.3	30	24	20
	PDR 1	8F	20.07	3	-	10	-
	PDR 2	8F	20.07	3	-	10	-
	PDR 3&4	8F	40.14	3	-	20	-

NUMBER OF ROOMS	Number of Rooms	Type		
	282	Premier Room	Deluxe Room	Junior Suite Room
		201	49	32

RESTAURANTS & BARS	Name	Location	Cuisine	Capacity
	MoMo Café	8F	International buffet	156
	MoMo Bar	8F	Beverage and snack	48

8F



Thesoom Forest

CAPACITY
120 Participants

📍 633, Seongsan-ro, Jeondae-ri, Pogok-eup, Cheoin-gu, Yongin-si, Gyeonggi-do, Republic of Korea

☎ +82-1522-2777 📠 +82-31-336-1778

🌐 www.hotelthesoom.com 🖱



Pension-style Resort Accompanied by First-class Services

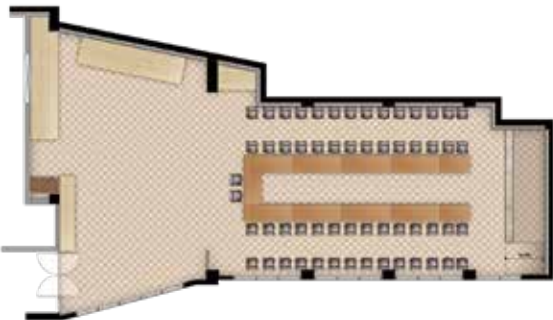
Hotel Thesoom Forest is a European pension-style resort near Everland theme park. Combining the luxury of a hotel with the comforts of a pension, the resort provides various themed guestrooms, including hotel-type rooms, pension-type self-catering rooms, maisonette-type rooms with separate living room and bedroom areas, and villa-type rooms each with its own barbecue area. The western-fusion restaurant Cielo serves breakfast buffet with Western and Korean dishes. Additional facilities include a barbecue garden, outdoor swimming pool, meeting rooms for workshops and seminars, and other convenience facilities.

DIMENSIONS & FACILITIES	Type	Location	Size		Capacity		
			Area(m ²)	Ceiling Height(m)	Theater	Classroom	Banquet
	Thesoom Banquet	1F	317	3.5	120	100	80

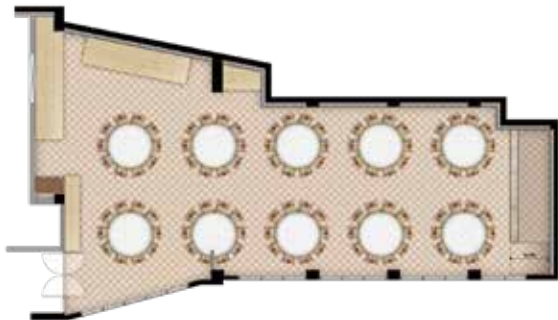
NUMBER OF ROOMS	Number of Rooms	Type						
	83	Villa Terrace	Villa	Duplex	Superior Terrace	Superior	Deluxe	Deluxe Twin
		3	4	10	4	24	6	32

RESTAURANTS & BARS	Name	Location	Cuisine	Capacity
	Cielo Restaurant	1F	Western Buffet Restaurant	80
	Thesoom Banquet	1F	Steak Buffet/Buffer	100

1F



2F



Yongin Central CO'OP Hotel

CAPACITY
240 Participants

📍 1216, Jungbu-daero, Cheoin-gu, Yongin-si, Gyeonggi-do, Republic of Korea

☎ +82-31-336-1100 📠 +82-31-336-1101 @ rsvn@yongincoop.co.kr

🌐 www.yongincoop.co.kr 🖱



Yongin's Landmark in front of Yongin City Hall

Opened in 2017, Yongin Central Co'Op Hotel is located in front of the city hall, with an easy access to transportation, and it is close to tourist attractions such as Korean Folk Village and Everland theme park. The hotel accommodates 726 guest rooms, including Standard Double/Twin, Deluxe Family Twin and Suite Double. It houses a banquet hall for up to 200 people and a meeting room, as well as a 24-hour business center, and a rooftop terrace with a view of the city. Concierge and dry cleaning services are available for guest convenience. Everland theme park is accessible by subway after 7 stops from City Hall-Yongin University Station, which is located near the hotel. Korean Folk Village is also a 20-minute drive.

DIMENSION & FACILITIES

Type	Location	Size		Capacity	
		Area(m ²)	Ceiling Height(m)	Theater	Banquet
Banquet Hall	2F	382	3.5	200	150
Meeting room	2F	57	3.5	40	20

NUMBER OF ROOMS

Number of Rooms	Type						
726	Standard Double	Standard Twin	Deluxe Family Twin	Deluxe Quadruple	Suite Double	Suite Family Twin	KIDS Suite
	47	64	290	10	17	6	1

RESTAURANTS & BARS

Name	Location	Cuisine	Capacity
Breakfast Room	2F	Semi buffet	150



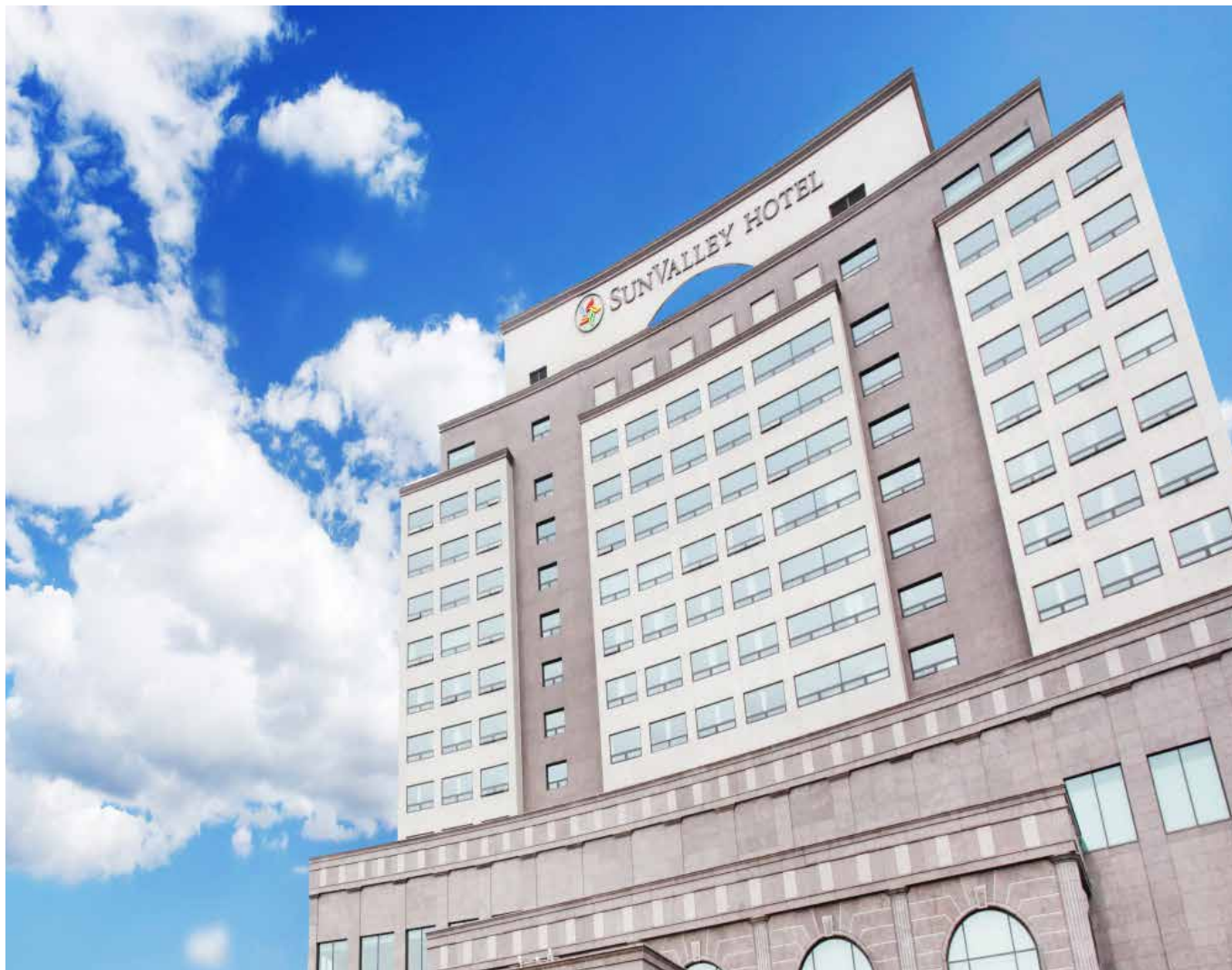
Namhangang Sunvalley Hotel

CAPACITY
650 Participants

📍 45, Gangbyeonyuwonji-gil, Yeosu-si, Gyeonggi-do, Republic of Korea ★ 4-star

☎ +82-31-880-3889 📠 +82-31-880-3801

🌐 www.sunvalleyhotel.co.kr 🖱



Hotel with All-Year-Round Water Park & Namhangang River Views

Located on the bank of the Namhangang River in Yeosu, Gyeonggi Province, Sun Valley Hotel is a 4-star hotel where leisure, relaxation and business coexist. It accommodates a total of 202 rooms ranging from Standard Twin to Sun Valley Suites. Especially, terrace ondol (traditional floor heating system) room on the 5th floor offers an outdoor swimming pool and scenic views of the Namhangang River. There are six banquet halls including a Grand Ballroom which can accommodate up to 1,000 people for a banquet and seminar. On the top floor, various facilities are available such as Cielo Sky Lounge restaurant, a fitness center and an indoor screen golf. In addition, Greek-style water park offers a wave pool, an extreme slide and various kinds of spas throughout the year.

DIMENSION & FACILITIES

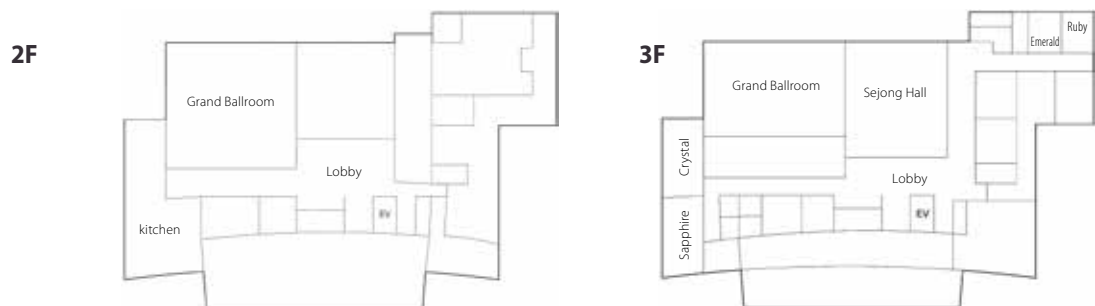
Type	Location	Size		Capacity		
		Area(m ²)	Ceiling Height(m)	Theater	Classroom	Banquet
Grand Ballroom	2F	1,076	8.5	800	450	400
Sejong Hall	3F	620	3.1	400	200	250
Crystal Room	3F	158	3.1	120	80	70
Sapphire Room	3F	132	3.1	100	70	60
Emerald Room	3F	97	3.1	70	40	40
Ruby Room	3F	86	3.1	60	40	40

NUMBER OF ROOMS

Number of Rooms	Type										
	Standard Twin	Double Twin	Triple	Family Twin	Double Ondol	Double	Single Ondol	Terrace Ondol	Parlor Suite	Sunvalley Family Suite	Sunvalley Suite
202	16	37	18	36	9	35	17	15	7	4	7

RESTAURANTS & BARS

Name	Location	Cuisine	Capacity
Cielo	13F	Western Food	-
Daon	13F	Korean Food	-



Ramada Yongin Hotel

CAPACITY
370 Participants

📍 420, Maseong-ro, Pogok-eup, Yongin-si, Gyeonggi-do, Republic of Korea

☎ +82-31-8097-6500 📠 +82-31-8097-7555

🌐 www.ramadayongin.com 🖱



Luxury Hotel Near Everland Theme Park

Part of Wyndham Hotel Group, Ramada Yongin Hotel features 2 floors underground and 18 floors above ground. A total of 399 rooms are available in 11 types such as Deluxe Double/Twin, Family Twin and Premier Twin. Also depending on the size and nature of the event, small and medium-sized banquet halls with a cutting-edge AV system are available, including Herb Hall that can accommodate up to 320 people. Guests can enjoy the night view of Everland and fireworks from the rooftop on the 18th floor and relax in Classic Gardens on the 3rd floor. Especially, it is a 5-minute drive from Everland and Caribbean Bay, and it is located near Yongin's tourist attractions such as Korean Folk Village and the Nam June Paik Art Center.

DIMENSION & FACILITIES

Type	Location	Size		Capacity		
		Area(m ²)	Ceiling Height(m)	Theater	Classroom	Banquet
Herb hall(Lavender+Jasmine)	2F	383	3.1	320	250	200
Lavender hall		176	3.1	160	120	100
Jasmine hall		178	3.1	160	120	100
PDR1		66	3.1	50	36	32

NUMBER OF ROOMS

Number of Rooms	Type						
	Deluxe Double	Deluxe Twin	Delux Quad	Deluxe Family Twin	Deluxe Premier Twin	Kids Room	Party Suite Room
399	62	48	68	140	72	8	1

RESTAURANTS & BARS

Name	Location	Cuisine	Capacity
Restaurnant Rosemary	2F	Breakfast buffet, Group meal (lunch&dinner buffet, korean A La Carte, western set)	150



Yangji Pine Resort

CAPACITY
1,250 Participants

📍 112, Nampyeong-ro, Namgok-ri, Yangji-myeon, Cheoin-gu, Yongin-si, Gyeonggi-do, Republic of Korea

☎ +82-31-338-2001 📠 +82-31-338-2260

🌐 www.pineresort.com 🖱



Year-round Vacation Resort for Golf, Ski, and Hot Springs

Located a 40-minute drive from Seoul, Yangji Pine Resort is an all-season recreational complex in a wonderful natural environment. The resort features Pine Golf Club, a 27-hole golf course surrounded with exuberant pine grove, and Pine Ski Valley that makes good use of the geographical features of Dokjosa Mountain and is well-equipped for night time skiing. The resort has 10 ski slopes and 6 lifts, spanning over 360,000m². Skiers can wind down by dipping in the alkaline hot spring water that is extracted from 970m deep underground. The resort offers a total of 302 guest rooms, along with alpine slider and artificial rock climbing facilities.

DIMENSIONS & FACILITIES

Type	Location	Size		Capacity		
		Area(m²)	Ceiling Height(m)	Theater	Classroom	Banquet
Condo						
Fine Hall	11F	397	-	300	250	200
Maestro 1	1F	-	-	-	-	-
Maestro 2	1F	-	-	-	-	-
Rental House						
Rental 1	2F	826	-	500	400	300
Rental 2	3F	165	-	150	120	80
Rental 3	3F	165	-	150	120	80
Knox 1	3F	132	-	100	80	70
Knox 2	3F	66	-	50	30	-
Snack House						
Oliy Oliy	1F	-	-	120	100	100

NUMBER OF ROOMS

Number of Rooms	Type					
	23 (75.3m ²)	34 (113.1m ²)	42 (137.8m ²)	48 (160m ²)	49 (163m ²)	69 (228.1m ²)
296	153	102	19	9	10	3

RESTAURANTS & BARS

Name	Location	Cuisine	Capacity
Biwon	Condo 1F	Korean	150
Ops	Condo 1F	Western	200
Snack House	Snack House	Restaurant for groups	500
Oliy Oliy	-	Rock Cafe	150



Hanwha Resort Yangpyeong

CAPACITY
1,700 Participants

📍 188, Okcheon-ri, Okcheon-myeon, Yangpyeong-gun, Gyeonggi-do, Republic of Korea

☎ +82-31-772-3811 📠 +82-31-772-5588

🌐 www.hanwharesort.co.kr 🖱



Nature-surrounded Meeting Venue with Leisure and Sports Facilities

Nestled in the midst of nature near Namhangang River and Yumyeongsan Mountain, Hanwha Resort Yangpyeong is an optimal place for corporate trainings. The resort has a wide array of seminar rooms and banquet halls, along with a forest therapy garden and various recreational facilities, such as a camping site, an outdoor swimming pool in summer and a sledding park in winter. The resort houses 387 family rooms and 14 royal suites, while corporate training programs are offered at the Yangpyeong Challenge Course. The resort's signature menu, Yumyeongsan Bibimbap, is a savory dish made with Jeju pork and seasonal wild vegetables.

DIMENSIONS & FACILITIES	Type	Location	Size		Capacity		
			Area(m ²)	Ceiling Height(m)	Theater	Classroom	Banquet
	Sanbeot	1F	-	2.5	80	60	54
	Suyeon Hall	1F	135	2.5	80	60	54
	Yuchae Hall	1F	397	2.5	80	60	54
	Baek Hall	1F	826	2.4	80	60	54
	Song Hall	1F	165	2.4	80	60	54
	Mae Hall	1F	165	2.4	80	60	54
	Nan Hall	1F	132	2.4	80	60	54
	Guk Hall	1F	66	2.4	40	30	27
	Juk Hall	1F	-	2.4	-	21	-
	Namhangang	2F	-	3.8	300	180	120
	Cheong Hall	8F	-	2.4	150	100	81
	Hong Hall	8F	182	2.4	150	100	81
	Yeon Hall	8F	182	2.4	150	100	81
	Mugunghwa	9F	448	3.4	350	250	150

NUMBER OF ROOMS

Number of Rooms	Type	
401	Family	Royal
	387	14

RESTAURANTS & BARS

Name	Location	Cuisine	Capacity
Nymph Garden	1F	Korean (Jeju black pork)	250
Sanmaehwa Restaurant	2F	Korean (Yumyeongsan Bibimbap)	200



Hanwha Resort Yongin Besançon

CAPACITY
1,248 Participants

📍 79, Bongmu-ro 153beon-gil, Tongsam-ri, Namsa-myeon, Cheoin-gu, Yongin-si, Gyeonggi-do, Republic of Korea

☎ +82-31-332-1122 📠 +82-31-332-7185

🌐 www.hanwharesort.co.kr 🖱



Green Vacation Spot Aspiring to be a MICE Mecca

Located an hour way from the Gangnam area of Seoul, Hanwha Resort Yongin Besançon is the best MICE-oriented resort in the southern metropolitan region. Resembling the leisureliness of France's first green city, Besançon, the resort is popular among business travelers as a green space for relaxation. The resort offers 261 simple, yet classy guestrooms, as well as 15 seminar rooms equipped with beam projectors and electronic podiums, and a 400-seat capacity conference hall that is divisible into two separate areas. It also has restaurants, barbecue space, and sauna facilities. Nearby attractions include NJP Art Center, Haedoollee Yongin Horseriding Course, and the Korean Folk Village.

DIMENSIONS & FACILITIES	Type	Location	Size		Capacity		
			Area(m ²)	Ceiling Height(m)	Theater	Classroom	Banquet
	Harmonie 1	B1	195	4.1	220	189	280
	Harmonie 2	B1	182	4.1	180	148	
	Forum 1	1F	102	3.2	120	96	-
	Forum 2	1F	76	3.2	88	64	-
	Forum 3	1F	76	3.2	88	64	-
	Forum 4	1F	40	3.2	-	24	-
	Forum 5	1F	50	3.2	40	32	-
	Forum 6	1F	36	2.7	-	24	-
	Forum 7	1F	36	2.7	-	24	-
	Forum 8	1F	56	2.7	54	45	-
	Forum 9	1F	36	2.7	-	24	-
	Forum 10	1F	59	2.7	54	45	-
	Forum 11	1F	59	2.7	54	45	-
	Forum 12	1F	59	2.7	54	45	-
	Arpege	2F	323	3.8	200	166	-

NUMBER OF ROOMS	Number of Rooms	Type	
	261	Family	Royal
		243	18

RESTAURANTS & BARS	Name	Location	Cuisine	Capacity
	Arte	B1F	Restaurant exclusively for groups	200
	Raffine	1F	Breakfast Buffet, Korean	200
	Le Grill	1F	BBQ	-



Konjiam Resort & Ski Course

CAPACITY
2,622 Participants

📍 278, Docheogwit-Ro, Docheok-Myeon, Gwangju-Si, Gyeonggi-Do, Korea

☎ +82-1661-8787 📠 +82-31-8026-5085

🌐 www.konjiamresort.co.kr 🖱



Premium Resort & Ski Course 40 minutes from Seoul

Located in Gwangju, Gyeonggi Province, Gonjiam Resort & Ski Resort is Korea's premium resort with the largest ski area and spa facilities in the metropolitan area. It houses a total of 29 convention facilities and provides various meeting spaces including the Grand Ballroom with a floor area over 500m² and theater-style meeting rooms. Furthermore, as it has a soccer field, a basketball court, an outdoor stage, and mountain trails, diverse events can be held at the resort. It accommodates a variety of restaurants and cafés including a cave wine restaurant 'Lagrotta', a buffet restaurant run by Chef Raymond Kim, and a Korean restaurant. Guests can also visit Hwadam Botanic Garden which is an eco-friendly arboretum that has won the award of '2017 Korea Tourism Star'.

DIMENSION & FACILITIES	Type	Location	Size		Capacity		
			Area(m ²)	Ceiling Height(m)	Theater	Classroom	Banquet
	Grand Ballroom	EW Village B2	452	5.2	500	400	350
	Convention Hall	EW Village B2	245	4.6	250	200	150
	Opus 1~2	EW Village B2	160	5.2	-	96	-
	Conference L1~L2	EW Village B1	119	2.6	100	80	-
	Conference L3~L5	EW Village B1	88	2.6	80	70	-
	Conference L6~L8	EW Village B2	88	2.6	80	70	-
	Conference M1	EW Village B1	48	2.7	80	60	-
	Conference M2		30	2.7	52	30	-
	Conference M3~4		30	2.7	52	26	-
	Conference M5		24	2.7	50	24	-
	Conference M6		30	2.7	52	24	-
	Conference M7		36	2.7	60	36	-
	Conference M8		36	2.7	60	50	-
	Conference M9		64	2.7	100	80	-
	Skadi 1~2	Ski House 1F	41	3	70	60	-
	Skadi 3		47	3	80	70	-
	Skadi 4~7		24	3	50	36	-
	Suryeon	Village Center 2F	126	2.7	-	70	70

NUMBER OF ROOMS	Number of Rooms	Type			
	476	Prime Room	Deluxe Suite	Noble Suite	Royal Suite
		92	226	129	29

RESTAURANTS & BARS	Name	Location	Cuisine	Capacity
	La Grotta	Ski House 1F	Italian winery restaurant St.	114
	Mirasia	Village Center 1F	Buffet & Pizza	206
	Damha	Village Center 2F	Korean	104
	Cafeteria	Ski House 2F	Korean · Japanese · Chinese · Western	620
	Kraze Burgers	Village Center 1F	Burgers	92
	Kisoya		Casual Japanese	40
	Steff Hotdog		Denmark Hotdog	24
	bbq Premium Café		K-Chicken & Casual Western	100
	Café Lounge	EW Village 1F	Café · Tea Lounge	100
	Ballroom	EW Village B2	Buffet or Custom Order	450

Ocher Village

CAPACITY
122 Participants

📍 22, Jangsu-gil, Yeonsu-ri, Yongmun-myeon, Yangpyeong-gun, Gyeonggi-do, Republic of Korea

☎ +82-31-775-5071 📠 +82-31-775-5074

🌐 www.ocher.kr 🖱



Yangpyeong’s Ocher House for Health and Rest

Surrounded by gorgeous mountains and rivers, Yangpyeong is a reputed destination for leisure, sports, and relaxation. At its center is the Ocher Village, a camping site combining auto camping, glamping, caravans, and pensions. The village offers multi-functional meeting rooms and seminar rooms equipped with meeting facilities like beam projectors, A/V devices, wireless internet access, etc. The village’s biggest features are its 5 caravans and 13 ocher houses that provide eco-friendly and health-conscious accommodation options. Guests can enjoy barbecue on the second-floor balcony and throw garden parties in the open-air stage.

DIMENSIONS & FACILITIES	Type	Size		Capacity
		Area(m ²)	Ceiling Height(m)	Theater
	Ocher A Dong	39.7	-	16
	Ocher B Dong	49.6	-	24
	Ocher C Dong	66	-	50
	Caravan	-	-	20
	Glamping	-	-	12

NUMBER OF ROOMS	Number of Rooms	Type				
	21	Ocher A Dong	Ocher B Dong	Ocher C Dong	Caravan	Glamping
		4	4	5	5	3



Yangpyeong Forest Pension

CAPACITY
100 Participants

📍 777, Seoksan-ro, Saneum-ri, Danwol-myeon, Yangpyeong-gun, Gyeonggi-do, Republic of Korea

☎ +82-31-771-4471 📠 +82-31-774-7326

🌐 ypforest.modoo.at 🖱



Independent Pensions for Meetings and Relaxing Breaks

Yangpyeong Forest Pension consists of two luxury pool villa pensions nestled among the greenery of Yangpyeong. It is a popular corporate meeting venue with a large-size seminar room that can accommodate up to 120 attendees and two 46-seat capacity seminar rooms. Meeting facilities include supersized screens with projectors and home theater systems. The two independent pensions are specialized to accommodate group guests, each providing 5 bedrooms, 5 bathrooms, a large living room, and a hotel-style lobby. Other features include foot volleyball, volleyball, and badminton facilities, swimming pools, and barbecue services.

DIMENSIONS & FACILITIES

Type	Location	Size		Capacity		
		Area(m ²)	Ceiling Height(m)	Theater	Classroom	Banquet
A Bldg. Seminar Room	Grand A Bldg.	54 (6mX9m)	3	80	50	40
B Bldg. Seminar Room	Grand B Bldg.	54 (6mX9m)	3	80	50	40
Large Seminar Room& Banquet Hall	Large Banquet Hall	135 (9mX15m)	10	160	120	80

NUMBER OF ROOMS

Number of Rooms	Type	
12	Grand A Bldg. (3-story pension)	Grand B Bldg. (3-story pension)
	6	6

RESTAURANTS & BARS

Name	Location	Cuisine	Capacity
Indoor Large Restaurant & BBQ	Large Banquet Hall	BBQ	120
Grand A Bldg. Tent BBQ	Grand A Bldg.	BBQ	70
Grand B Bldg. Tent BBQ	Grand B Bldg.	BBQ	70
Outdoor Grass Garden BBQ	Outdoor	BBQ	400



Sunning Leadership Center

CAPACITY
720 Participants

📍 205, Goan-ro 51beon-gil, Goan-ri, Baegam-myeon, Cheoin-gu, Yongin-si, Gyeonggi-do, Republic of Korea

☎ +82-31-329-0705 📠 +82-31-329-0715

🌐 www.sunningleader.co.kr 🖱



Educational Complex for Meetings and Golf

Sunning Leadership Center is the only educational complex in Korea to feature a combination of a corporate training institute and a public golf course. The center provides a variety of lecture facilities including seminar rooms and a large hall for up to 250 people. Its lawn plaza and barbecue area are available for corporate and cultural events, while the culture square can hold outdoor performances. Located across the leadership center is Sunning Point Country Club, characterized by an impressive 18-hole, 73-par golf course spread over 330 acres of land. The center also has banquet halls and restaurants with a maximum capacity of 200 participants.

DIMENSIONS & FACILITIES	Type	Location	Size		Capacity	
			Area(m ²)	Ceiling Height(m)	Theater	Classroom
	1F Grand Lecture Hall	1F	681	6	200	-
	2F Grand Lecture Hall	2F	384	5	-	150
	1 Seminar	1F	207	5	-	60
	2 Seminar	2F	207	4	-	60
	3 Seminar	2F	103	4	-	40
	4 Seminar	2F	103	4	-	40
	5 Seminar	2F	103	4	-	40
	6 Seminar	3F	103	4	-	40
	7 Seminar	2F	52	4	-	15
	8 Seminar	1F	52	4	-	15
	Language Lecture Hall 1	3F	52	4	-	15
	Language Lecture Hall 2	3F	52	4	-	15
	Language Lecture Hall 3	3F	52	4	-	15
	Language Lecture Hall 4	3F	52	4	-	15

NUMBER OF ROOMS	Number of Rooms	Type		
	156	Standard Room (double)	VIP Room (single)	Suite Room (double)
		153	2	1

RESTAURANTS & BARS	Name	Location	Cuisine	Capacity
	Restaurant	1F	Group Meals	180
	Grand Restaurant	2F	Course Menu	150



📍 199, Everland-ro, Jeondae-ri, Pogok-eup, Cheoin-gu, Yongin-si, Gyeonggi-do, Republic of Korea

☎ +82-31-320-5000 📠 +82-2-759-1999 🌐 www.everland.com 🖱



Land of Fantasy and Year-Round Festivals

Everland is a resort complex with a world-class amusement park, a water park, and seasonal festivals. Popular attractions include the thrilling wooden roller coaster “T-Express,” the world’s largest water park “Caribbean Bay,” and the amphibious safari “Lost Valley.” The 4D video and VR experience at the digital history center is also interesting. Other unique attractions are Ho-Am Art Museum and Glenross golf course inhabited by peacocks.

DIMENSION & FACILITIES

Type	Size		Capacity	
	Area(m ²)	Ceiling Height(m)	Theater	Classroom
Grand Stage	-	-	1,500	-
Hello Turning Adventure	-	-	973	-
Animal Wonder Stage	-	-	1,000	-
Sea Lion Stadium	-	-	1,000	-
Cabin Hostel New Wing Room 1~5	-	-	-	20
Cabin Hostel New Wing Room 1+2+3	-	-	-	60
Cabin Hostel New Wing Room 4+5	-	-	-	40
Cabin Hostel Main Building	528	-	250	140

Korean Folk Village

📍 90, Minsokchon-ro, Giheung-gu, Yongin-si, Gyeonggi-do, Republic of Korea

☎ +82-31-288-4000 📠 +82-31-697-2336 @ kfv4000@ikfv.co.kr 🌐 www.koreanfolk.co.kr 📱



Cultural Heritage Theme Park Displaying the Life of the Joseon Dynasty

A popular tourist destination, Korean Folk Village is a traditional culture theme park that features the realistic reconstruction of houses and life during the Joseon period. The village also offers a wide range of hands-on programs and events such as traditional games, craft workshops, and events that show the everyday practices of the time. A demonstration of a traditional wedding ceremony takes place twice a day and other regular performances include farmers' music, martial art on horseback, tightrope walking, and more.



📍 93, Yangsu-ro, Yongdam-ri, Yangseo-myeon, Yangpyeong-gun, Gyeonggi-do, Republic of Korea

☎ +82-31-775-1835 📠 +82-31-775-1845 @ ourculture@hanmail.net

🌐 www.semiwon.or.kr 🖱



Garden with Pavilion, Café, Lotus Flower Museum

Semiwon, known as “the garden of water and flowers”, is an ecological park located on the riverside of two rivers where the Bukhangang and Namhangang Rivers meet. In summer, the 200,000m² park outdoor garden is filled with lotus flowers and water lilies. In spring, autumn and winter, the garden showcases seasonal changes and decoration. Its popular sites are stepping stones, the fountain, the lotus museum, and the bridge. The two major festivals are Lotus Cultural Festival held from June to August and Water Lily Cultural Festival from September to October. During the festivals the park is open until 10pm and visitors can enjoy different night view of the ambience.



Hwadamsup

📍 278, Docheogwit-ro, Docheog-myeon, Gwangju-si, Gyeonggi-do, Republic of Korea

☎ +82-31-8026-6666~7 @ hwadam@serveone.co.kr

🌐 www.hwadamsup.com 🖱



Arboretum where People and Nature Interact

Opened in June, 2013, Hwadam Botanic Garden was established by the LG Evergreen Foundation to restore and protect the ecosystem of our forests. There are about 4,000 types of exquisite and domestic plants in 15 theme gardens on 1.4km² land. Visitors can enjoy beautiful nature of Korea on a monorail ride that circulates in Hwadam Botanic Garden or walk along the wooden deck walkway of 5.3km. Various festivals are held every season and the garden is open from mid-March until the end of November.



📍 16, Sumogwon-gil, Obin-ri, Yangpyeong-eup, Yangpyeong-gun, Gyeonggi-do, Republic of Korea
☎ +82-31-772-1800, +82-31-771-1733 📠 +82-31-771-1732 @ songgu83@naver.com
💻 www.nemunimo.co.kr 🖱



Healing Destination with Korean Wild Flowers and Herbs

Situated on the Namhangang Riverside, the Wild Flower Arboretum allows visitors to experience wild flowers and herbs. Notable attractions include the wildflower exhibition hall, herb garden, lotus flower covered pond, and tropical arboretum. Fun activities like grass sledding and water sports are available.



SIGHTSEEING &
HANDS-ON EXPERIENCE**Gonjiam Ceramic Park**

📍 727, Gyeongchung-daero, Sam-ri, Gonjiam-eup, Gwangju-si, Gyeonggi-do, Republic of Korea

☎ +82-31-799-1500 📠 +82-31-799-1528 🌐 www.kocef.org 🖱

**Cultural Complex to Experience and Enjoy Korean Ceramics**

The 160-acre Gonjiam Ceramic Park in Gwangju, Gyeonggi, is an Old Stone Age site, as well as the place where porcelain was made and sold to the royal palace during the Joseon Period. The park facilities include a mosaic garden, Gyeonggi Ceramic Museum, traditional crafts center, ceramic shopping mall, and performance hall.



Starlight Garden Ooozooo

📍 287-76, 154beon-gil, Deogi-ro, Majang-myeon, Icheon-si, Gyeonggi-do, Republic of Korea

☎ +82-31-645-0002 📠 +82-31-645-0044 @jmlee7909@kolon.com 🌐 www.oozooo.co.kr 🖱



It is an all-year-round illumination theme park decorated with the theme of 'mysterious light garden'. There are various unique themes such as starry 'Flower Garden', and 101m Milky Way 'Tunnel Galaxy 101'. It is famous for Asia's first space tower to be installed 35 meters above the ground, and it is a café offering a magnificent view from the tower.

Retro Museum Yangpyeong

📍 620, Yongmunsan-ro, Yongmun-myeon, Yangpyeong-gun, Gyeonggi-do, Republic of Korea

☎ +82-31-775-8907 📠 +82-31-775-8908 @7080museum@gmail.com 🌐 www.retromuseum.co.kr 🖱



It is an exhibition hall with reproduction of the 1970s alley, shops, and railroad tracks of Korea. Visitors can experience past recreation culture such as Dalgona and slap-match with paper card, wear past school uniforms and visit a tailor shop, a photo studio and a comic bookstore of the 70s and 80s.

SIGHTSEEING &
HANDS-ON EXPERIENCE

Yangpyeong Rail Bike

📍 277, Yongmun-ro, Samseong-ri, Yongmun-myeon, Yangpyeong-gun, Gyeonggi-do, Republic of Korea

☎ +82-31-775-9911 📠 +82-31-775-9915 🌐 www.yprailbike.com 🖱



Visitors to Yangpyeong can take a scenic rail bike ride along an abandoned railway. Passing along a gleaming river, lush mountains, and a refreshingly cool tunnel, the bike ride delivers picturesque scenery all year round. The rail bike journey is full of romance and fun, allowing visitors to enjoy the scent of crisp forest air and the sound of the running river.

HANDS-ON EXPERIENCE

Starfield Hanam Sports Monster

📍 750, Misa-daero, Hanam-si, Gyeonggi-do, Republic of Korea

☎ +82-31-8072-8502 🌐 www.sportsmonster.co.kr 🖱



Located inside Starfield Hanam shopping theme park, Sports Monster is a new concept space blending sports and entertainment. It offers unique team building programs incorporating the latest technology and extreme sports contents. Visitors can experience diverse activities like the VR exercise machine and indoor bike racing.

Yeoju Challenge Adventure

📍 1389, Gwangyeo-ro, Baekja-ri, Sanbuk-myeon, Yeoju-si, Gyeonggi-do, Republic of Korea

☎ +82-2-3436-2567 📠 +82-2-3437-6104 🌐 www.challengekorea.com 📧 challengetop.blog.me 📍



It is an outdoor experience facility providing large-scale team building programs. A popular site for seminars and workshops, the facility promotes cooperation and creativity through exciting adventure sports. Notable programs include the Challenge High Course, Zip-line, and Quick Jump. Also available are a camping site, hiking trails, and seminar rooms.

DIMENSIONS & FACILITIES

Type	Size		Capacity
	Area(m ²)	Ceiling Height(m)	
Adventure course	7,263	-	120

Yongin Daejanggeum Park

📍 778-1, Yongcheon-ri, Baegam-myeon, Cheoin-gu, Yongin-si, Gyeonggi-do, Republic of Korea

☎ +82-31-337-3241 📠 +82-31-323-0038 @ djgpark@mbc.co.kr 🌐 djgpark.imbc.com 📍



Daejanggeum Park is a historical drama open set in Yongin. Visitors to the park can experience traditional Korean culture and tour the places that appeared in popular drama series, such as "Dae Jang Geum (also known as Jewel in the Palace)," "Moon Embracing the Sun," and "Jumong." The park features a truthful reproduction of architecture and living spaces from different periods in history. Visitors can try on traditional Korean clothing and feel as if they have traveled back in time.

SIGHTSEEING &
HANDS-ON EXPERIENCE

Dumehyanggi

📍 62-59, 592beon-gil, Mokwhang-ro, Yangseo-myeon, Yangpyeong-gun, Gyeonggi-do, Republic of Korea
 ☎ +82-31-774-3114 📠 +82-31-774-5114 @ dumeh@naver.com 🌐 doomeh.kr 📱



Dumehyanggi is a wild greens theme park with beautiful wild flowers and located at the foot of Cheonggye Mountain in Yangpyeong. Measuring approximately 165,290m², the park has facilities such as a theme garden, a gallery café, and a restaurant where you can enjoy bibimbap with wild vegetables. It offers an all-year-round starlight festival and the farming experience of harvesting in all seasons.

SIGHTSEEING &
HANDS-ON EXPERIENCE

Icheon Pig Museum

📍 129-7, Imosan-ro 372beon-gil, Wolpo-ri, Yul-myeon, Icheon-si, Gyeonggi-do, Republic of Korea
 ☎ +82-31-641-7540 📠 +82-31-641-7541 🌐 pigpark.co.kr 📱



Located in Icheon, it is the first pig-themed hands-on museum in Asia. The museum exhibits a host of pig-related articles from 18 countries around the world. Visitors can also watch pig performances and take part in the sausage making experience program, after which they can enjoy a barbecue party featuring healthy recipes.

Yangpyeong The Greem

📍 175, Sanasa-gil, Yongcheon-ri, Okcheon-myeon, Yangpyeong-gun, Gyeonggi-do, Republic of Korea

☎ +82-70-4257-2210 @jesceo@hanmail.net 🌐 www.thegreem.com 📍



The Greem offers picturesque scenery of a red brick house, hexagonal café, open-air terrace, and green grass covering its spacious garden. The place is well known as the filming location of numerous TV dramas, commercials, and movies. Visitors can hold seminars and workshops, as well as enjoy a healing experience amid pine forest.

DIMENSIONS &
FACILITIES

Type	Location	Size		Capacity	
		Area(m ²)	Ceiling Height(m)	Theater	Banquet
Seminar Room	Seminar Bldg.	77.76	5.5	45	30

Anseong Farmland

📍 28, Daesindu-gil, Sindu-ri, Gongdo-eup, Anseong-si, Gyeonggi-do, Republic of Korea

☎ +82-31-8053-7979 ☎ +82-31-8053-7914 @asfarmland@naver.com 🌐 www.nhasfarmland.com 📍



It is a livestock theme park where visitors can enjoy a stroll through its 1.3km² meadows, farm experience and horse riding. It is also a unique convention venue with an indoor event hall that can accommodate up to 2,000 people, along with medium and small sized meeting rooms for seminars and banquets. It hosts a rye field festival and a rape flower festival in spring and Cosmos Shepherd Festival where you can enjoy cosmos and pink muhly grass in autumn.

DIMENSIONS &
FACILITIES

Type	Location	Size		Capacity	
		Area(m ²)	Ceiling Height(m)	Theater	Banquet
Grand event hall	1F	1,980	-	-	1,000
Conference room(L)	1F	162	-	100	-
Conference room(M)	2F	108	-	60	-
Conference room(S)	2F	72	-	20	-

SIGHTSEEING &
HANDS-ON EXPERIENCE

Sumi Village

📍 Sumi Village Visitors Center, 55-2, Gobdani-gil, Danwol-myeon, Yangpyeong-gun, Gyeonggi-do, Republic of Korea
 ☎ +82-31-775-5205 📠 +82-31-775-5206 @ soomy@bullsland.co.kr 🌐 soomyland.com 📱



It is a rural village where a festival is held every day of the year amidst green nature of Yongmunsan Mountain in Yangpyeong. It offers various seasonal activities such as strawberry harvesting in spring, catching a catfish with bare hands in summer, fall harvest festivals, and ice fishing festival in winter. Visitors can also enjoy exciting amphibious car in Heukcheon that flows in front of the village.

SIGHTSEEING &
HANDS-ON EXPERIENCE

Chicken University

📍 191, Seoicheon-ro 528beon-gil, Mok-ri, Majang-myeon, Icheon-si, Gyeonggi-do, Republic of Korea
 ☎ +82-31-635-8461 📠 +82-31-635-8464 🌐 www.ckuniversity.com 📱



Chicken University is an education and training institute established by Genesis BBQ Group. Its Chicken Camp Experience has gained global popularity thanks to the growing interest in fried chicken that often makes an appearance in Korean TV dramas. Camp participants can make and sample fried chicken. The facility is also available for group team building programs and workshops.

DIMENSIONS &
FACILITIES

Type	Location	Size		Capacity	
		Area(m ²)	Ceiling Height(m)	Theater	Classroom
Chungseong Hall Small Lecture Hall 1	2F	75	2.4	-	24
Chungseong Hall Medium Lecture Hall	2F	107	2.4	-	30
Chungseong Hall POS Training Room	2F	75	2.4	-	16
Chungseong Hall Small Lecture Hall 2	3F	75	2.4	-	12
Chungseong Hall Auditorium	4F	306	5.4	96	200

Icheon Lotte Premium Outlet

📍 177-74, Premium outlet-ro, Dancheon-ri, Hobeop-myeon, Icheon-si, Gyeonggi-do, Republic of Korea

☎ +82-31-777-2500 📠 +82-31-887-4089

🌐 store.lotteshopping.com/handler/Main-Start?subBrchCd=059 🖱



Lotte Premium Outlet in Icheon, a UNESCO-designated creative city known for ceramics, is the largest outlet mall of its kind in Asia. The outlet features a unique exterior design resembling the beautiful curve of ceramics and carries a local ceramic shop in addition to famous international brands like Etro and Fissler. The world's first BMW Motorrad Café is found in this mall.

Yeoju Premium Outlets

📍 360, Myeongpum-ro, Yeoju-si, Gyeonggi-do, Republic of Korea

☎ +82-1644-4001 🌐 www.premiumoutlets.co.kr/yeoju/ko 🖱



It is Korea's first premium designer outlet, featuring 270 brand stores as a world class outlet. It also boasts over 60 luxury brands such as Gucci, Burberry, YSL and Bottega Veneta, that no other local outlets have.

NORTHWESTERN AREA

No.	Designation	Facilities	Capacity	Website	Page
1	KINTEX	Meeting	300,000	www.kintex.com	018
2	Ara Marina Convention	Meeting	800	www.aramarina.wedding	022
3	DMZ Ecotourism Information Center	Meeting	300	www.ggtour.or.kr	024
4	The MVL Hotel Goyang	Hotel(5-Star)	Meeting 1,040 377 Rooms	www.mvlhotel.com/goyang	026
5	Hotel L'art	Hotel	Meeting 150 144 Rooms	lartgimpo.com	028
6	Hyundai Cruise	Cruise	1,000	www.aracruise.co.kr	030
7	Onemount	Sightseeing & Hands-on Experience	-	www.onemount.co.kr	032
8	Aqua Planet Ilsan	Sightseeing & Hands-on Experience	-	www.aquaplanet.co.kr/ilsan	033
9	Hyundai Motor Studio Goyang	Sightseeing & Hands-on Experience	320	motorstudio.hyundai.com/goyang	034
10	Camp Greaves DMZ Experience Center (Youth Hostel)	Hands-on Experience	525	www.dmzcamp131.or.kr	035
11	Panmunjeom	Sightseeing	-	-	035
12	Aram Nuri	Viewing	4,636	www.artgy.or.kr	036
13	Korean Traditional Stone Pot Bibimbap Cultural Experience Hall	Hands-on Experience	-	-	036
14	Hyundai Department Store – KINTEX Branch	Shopping	-	www.ehyundai.com	037
15	Paju Premium Outlets, a Shinsegae Simon Center	Shopping	-	www.premiumoutlets.co.kr/paju	037
16	Lotte Premium Outlet - Paju Branch	Shopping	-	store.lotteshopping.com/handler/Main- Start?subBrchCd=054	038
17	Hyundai Premium Outlet Gimpo	Shopping	-	www.ehyundai.com/newPortal/outlet/DP/ DP000000_V.do?branchCd=B00172000	038
18	Lakins Mall	Shopping	-	www.lakins.co.kr	039
19	Western Dom	Shopping	-	-	039

NORTHEASTERN AREA

No.	Designation	Facilities	Capacity	Website	Page
1	CheongShim Peace World Center	Meeting	25,200	www.cspwc.co.kr	042
2	Good Morning HRD Center	Meeting & Accommodation	Meeting 1,265 44 Rooms	www.gmhrd.com	046
3	Island Castle Hotel&Resort	Meeting & Accommodation	Meeting 1,550 101 Rooms	Island-castle.co.kr	048
4	Hanwha Resorts Sanjeong Lake Annecy	Resort	Meeting 850 212 Rooms	www.hanwharesort.co.kr	050
5	Kensington Resort	Resort	Meeting 1,710 176 Rooms	www.kensingtonhotel.com	052
6	W Jiwoo Resort	Resort	Meeting 400 98 Rooms	wjiwooresort.com	054
7	Chi-ong Art Center	Meeting & Accommodation	Meeting 253 11 Rooms	www.chi-ong.co.kr	056
8	Herb Island	Sightseeing & Hands-on Experience	990	www.herbisland.co.kr	058
9	Petite France	Sightseeing & Hands-on Experience	-	www.pfcamp.com	059
10	The Garden of Morning Calm	Sightseeing & Hands-on Experience	-	www.morningcalm.co.kr/html/main.php	060
11	Pocheon Art Valley	Sightseeing & Hands-on Experience	880	www.artvalley.pocheon.go.kr	061
12	Sandulsori Botanical Garden	Sightseeing & Hands-on Experience	-	www.sandulsori.co.kr	061
13	Bears Town Resort	Sightseeing & Hands-on Experience	1,940	www.bearstown.com	062
14	Amazing Park	Sightseeing & Hands-on Experience	-	www.amazingpark.co.kr	062
15	Sansawon	Sightseeing & Hands-on Experience	-	www.sansawon.co.kr	063
16	Namyangju Organic Theme Park	Sightseeing & Hands-on Experience	400	www.organicmuseum.or.kr	063

SOUTHWESTERN AREA

No.	Designation	Facilities	Capacity	Website	Page
1	SINTEX	Meeting	3,932	https://laviedorresort.co.kr/convention.asp	066
2	Suwon Convention Center	Meeting	10,200	-	070

3	Novotel Ambassador Suwon	Hotel(4-Star)	Meeting 1,790 287 Rooms	www.novotelsuwon.com	072
4	Ramada Plaza Suwon	Hotel(4-Star)	Meeting 2,060 288 Rooms	www.ramadaplazasuwon.com	074
5	Royal Heritage Hotel	Hotel(3-Star)	Meeting 1,500 401 Rooms	www.royalheritage.co.kr	076
6	Rolling Hills Hotel	Hotel(4-Star)	Meeting 906 228 Rooms	www.rollinghills.co.kr	078
7	Shilla Stay Dongtan	Hotel(3-Star)	Meeting 64 286 Rooms	www.shillastay.com/dongtan	080
8	Ibis Ambassador Suwon	Hotel(3-Star)	Meeting 1,910 240 Rooms	www.ibissuwon.com	082
9	Hotel Prumir	Hotel(4-Star)	Meeting 1,500 239 Rooms	www.hotelprumir.com	084
10	Hotel Square	Hotel(3-Star)	Meeting 1,510 203 Rooms	hotelsquare.co.kr	086
11	Landmark Hotel	Hotel(2-Star)	Meeting 100 104 Rooms	www.landmarkhotel1.com	088
12	Value Hotel Suwon	Hotel	Meeting 240 300 Rooms	www.valuehighend.com	090
13	Hotel Vella Suite	Hotel	Meeting 210 99 Rooms	vellasuitehotel.co.kr	092
14	Suwon Silkroad Hotel	Hotel	Meeting 150 130 Rooms	www.hotelsilkroad.co.kr	094
15	The Koryo Hotel	Hotel(4-Star)	Meeting 516 127 Rooms	www.hotelkoryo.net	096
16	Ramada Pyeongtaek Hotel	Hotel	Meeting 595 476 Rooms	www.ramadapyeongtaek.com	098
17	La Vie D'or Resort	Resort	Meeting 340 241 Rooms	www.laviedor.com	100
18	Gyeonggi-do Youth Center	Youth-Center	Meeting 406 47 Rooms	www.ggye.kr	102
19	Suwon Hwaseong Fortress	Sightseeing & Hands-on Experience	-	www.swcf.or.kr	104
20	Gwangmyeong Cave	Viewing & Hands-on Experience	350	www.gm.go.kr/cv/index.do	105
21	Seoul Land	Sightseeing & Hands-on Experience	5,450	www.seoulnd.co.kr	106
22	Woongjin Playdoci	Sightseeing & Hands-on Experience	-	www.playdoci.com	107
23	Aiins World	Sightseeing & Hands-on Experience	-	www.aiinsworld.com	108
24	Bucheon Robo Park	Viewing & Hands-on Experience	80	www.robopark.org	108
25	Jebudo Island	Sightseeing & Hands-on Experience	-	-	109

26	Ansan Reed Marsh Park	Sightseeing & Hands-on Experience	-	wetland.iansan.net	109
27	Samsung Innovation Museum	Viewing & Hands-on Experience	300	www.samsunginnovationmuseum.com	110
28	Gyeonggi-Do Suwon Worldcup Stadium Foundation	Viewing	43,743	suwonworldcup.gg.go.kr	110
29	Korea Manhwa Museum	Viewing & Hands-on Experience	526	komacon.kr/comicsmuseum	111
30	Glass Island	Viewing & Hands-on Experience	-	www.glassisland.co.kr	111
31	Uiwang Rail Bike	Sightseeing & Hands-on Experience	-	www.uwrailpark.co.kr	112
32	Gyeonggi Arts Center	Viewing	2,250	www.ggac.or.kr	112
33	Pyeongtaek Gyodong Ferry Co. Ltd.	Viewing & Hands-on Experience	880	www.pjferry.co.kr	113
34	Suwon Traditional Culture Center	Hands-on Experience	68	-	113

SOUTHEASTERN AREA

No.	Designation	Facilities	Capacity	Website	Page
1	The Bloomvista	Meeting & Accommodation	Meeting 939 292 Rooms	www.bloomvista.co.kr	116
2	Daemyung Resort Yangpyeong	Resort	Meeting 1,130 191 Rooms	www.daemyungresort.com	120
3	Chereville Paradise Institute	Meeting & Accommodation	Meeting 633 68 Rooms	www.cherevillehotel.com, www.cherevilletrain.com	122
4	Adela Hanok	Meeting & Accommodation	Meeting 100 13 Rooms	www.아델라한옥.com	124
5	Courtyard by Marriott Seoul Pangyo	Hotel(4-Star)	Meeting 262 282 Rooms	www.courtyardpangyo.com, www.marriott.com/selpn	126
6	The soom Forest	Hotel	Meeting 120 83 Rooms	www.hotelthesoom.com	128
7	Yongin Central CO'OP Hotel	Hotel	Meeting 240 726 Rooms	www.yongincoop.co.kr	130
8	Namhangang Sunvalley Hotel	Hotel(4-Star)	Meeting 650 202 Rooms	www.sunvalleyhotel.co.kr	132
9	Ramada Yongin Hotel	Hotel	Meeting 370 399 Rooms	www.ramadayongin.com	134
10	Yangji Pine Resort	Resort	Meeting 1,250 296 Rooms	www.pineresort.com	136
11	Hanwha Resort Yangpyeong	Resort	Meeting 1,700 401 Rooms	www.hanwharesort.co.kr	138
12	Hanwha Resort Yongin Besançon	Resort	Meeting 1,248 261 Rooms	www.hanwharesort.co.kr	140

13	Konjiam Resort & Ski Course	Resort	Meeting 2,622 476 Rooms	www.konjiamresort.co.kr	142
14	Ocher Village	Meeting & Accommodation	Meeting 122 21 Rooms	www.ocher.kr	144
15	Yangpyeong Forest Pension	Meeting & Accommodation	Meeting 100 12 Rooms	ypforest.modoo.at	146
16	Sunning Leadership Center	Meeting & Accommodation	Meeting 720 156 Rooms	www.sunningleader.co.kr	148
17	Everland Themepark	Sightseeing & Hands-on Experience	4,843	www.everland.com	150
18	Korean Folk Village	Sightseeing & Hands-on Experience	–	www.koreanfolk.co.kr	151
19	Semiwon Garden	Sightseeing & Hands-on Experience	–	www.semiwon.or.kr	152
20	Hwadamsup	Sightseeing & Hands-on Experience	–	www.hwadamsup.com	153
21	Wild Flower Arboretum	Sightseeing & Hands-on Experience	–	www.nemunimo.co.kr	154
22	Gonjam Ceramic Park	Sightseeing & Hands-on Experience	–	www.kocef.org	155
23	Starlight Garden Ooozooo	Sightseeing & Hands-on Experience	–	www.ooozooo.co.kr	156
24	Retro Museum Yangpyeong	Sightseeing & Hands-on Experience	–	www.retromuseum.co.kr	156
25	Yangpyeong Rail Bike	Sightseeing & Hands-on Experience	–	www.yprailbike.com	157
26	Starfield Hanam Sports Monster	Hands-on Experience	–	www.sportsmonster.co.kr	157
27	Yeoju Challenge Adventure	Hands-on Experience	120	www.challengekorea.com , challengetop.blog.me	158
28	Yongin Daejanggeum Park	Sightseeing & Hands-on Experience	–	djgpark.imbc.com	158
29	Dumehyanggi	Sightseeing & Hands-on Experience	–	doomeh.kr	159
30	Icheon Pig Museum	Sightseeing & Hands-on Experience	–	pigpark.co.kr	159
31	Yangpyeong The Greem	Sightseeing & Hands-on Experience	45	www.thegreem.com	160
32	Anseong Farmland	Sightseeing & Hands-on Experience	1,180	www.nhasfarmland.com	160
33	Sumi Village	Sightseeing & Hands-on Experience		soomyland.com	161
34	Chicken University	Sightseeing & Hands-on Experience	282	www.ckuniversity.com	161
35	Icheon Lotte Premium Outlet	Shopping	–	store.lotteshopping.com/handler/Main-Start?subBrchCd=059	162
36	Yeoju Premium Outlets	Shopping	–	www.premiumoutlets.co.kr/yeoju/ko	162

GENERAL INFORMATION

Population & Geographical Location

Gyeonggi Province consists of 31 cities and counties, spanning a total area of 10,175km². The province is about 17 times the size of Seoul, 15 times the size of Singapore, and 9 times the size of Hong Kong. It borders Chungcheongnam-do to the south, the West Sea to the west, and has Seoul and Incheon, in its center. As of July 2016, the population of Gyeonggi is approximately 13 million. Suwon is the most heavily populated city with 1.19 million residents, while Yangpyeong has the largest area, covering 877km².



Time Zone

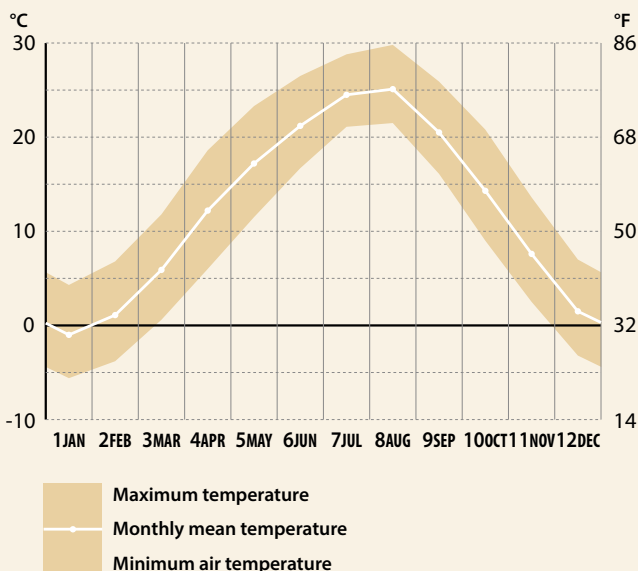
Korea uses Korea Standard Time (KST), which is 9 hours ahead of UTC (UTC+09). There are several other countries that have the same time zone – Russia's Yakutsk Time (YAKT); Japan's Japan Standard Time (JST); Indonesia's Eastern Indonesian Time (WIT); and Timor-Leste's East Timor Time (TLT).

Language

Korean is the official language of Korea. It is used throughout the Korean peninsula and its adjacent islands, including Jeju. Tourist information and interpretation services are available in English, Japanese, and Chinese at major tourist attractions for international visitors.

Climate

Located in the central region of the Korean Peninsula, Gyeonggi Province mostly has a continental climate and also a mountainous climate in the east. Winter is cold due to the seasonal wind from the northwest, whereas summer is hot with lots of precipitation. The annual average temperature is between 11-13°C, where the temperature in the mountain areas to the northeast is lower and the coastal areas to the southwest is higher. The temperature difference is greater in the inland areas than near the coast.



National Holidays

In Korea, holidays and seasons are marked by various celebrations and customs. While Koreans use both the solar and lunar calendars, traditional holidays and seasonal events are usually celebrated based on the lunar calendar. Seollal and Chuseok are the two major holidays in Korea. On Seollal (January 1 of the lunar calendar), Koreans put on their finest clothes, bow to their elders, and visit ancestral graves. During Chuseok (August 15 of the lunar calendar), a celebration of the year's harvest and thanksgiving, Koreans eat fresh harvested rice and songpyeon (rice cakes).

Currency

The monetary unit used in Korea is the won (₩). Bank notes come in denominations of 1,000, 5,000, 10,000 and 50,000 won bills and 1, 10, 50, 100, and 500 coins. The exchange rates (as of June 30, 2016) are: 1,151.00 KRW = 1 USD, 1,278.30 KRW = 1 EUR, and 1,120.63 KRW = 100 JPY.

Tax

Korea's tax free system can be divided into "Duty Free," and "Tax Refund." In duty free shops, no tax is applied to the price of items, including Individual Consumption Tax and Value Added Tax (VAT). Meanwhile, tax refund stores include tax and shoppers can apply for tax refunds at the airport for purchases of more than 30,000 won within 3 months of departure from Korea. Since January 1, 2016, immediate tax refund is offered to international travelers for convenient shopping. The prompt tax refund applies for purchases of less than 200,000 won, and is limited to a total value of 1,000,000 won per visit.

Business Hours (Government Offices & Banks)

In Korea, government offices follow the hours 9:00-18:00. Banks are open 9:00-16:00 and closed on Saturdays, Sundays, and public holidays.

Visa

All foreign nationals entering Korea are required to have a Korean visa. Korea does not offer visa on arrival except in very rare occasions, so unless you are from a country that has a visa waiver agreement with Korea, you need to obtain a proper visa in advance.

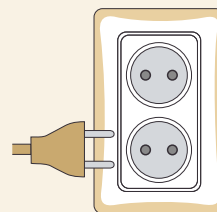
* For detailed information on visa, please visit the official website (www.visa.go.kr).

January 1	New Year's Day
March 1	Independence Movement Day
April 8 (lunar calendar)	Buddha's Birthday
May 5	Children's Day
June 6	Memorial Day
August 15	National Liberation Day
October 3	National Foundation Day
October 9	Hangeul Day
December 25	Christmas



Electricity

The standard voltage is 220 volts and 60 hertz.



Type C, F

TRAFFIC INFORMATION

Incheon International Airport / Gimpo International Airport

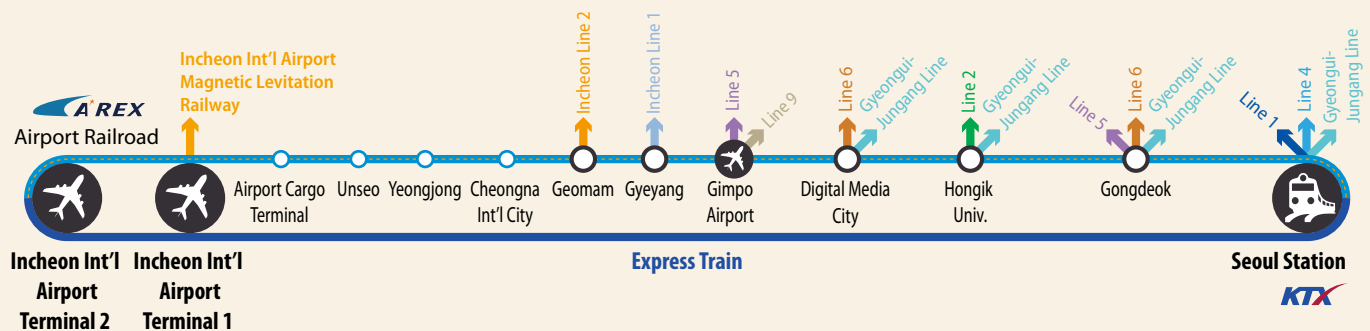
Incheon International Airport is a global hub, serving more than 60 million passengers a year. The airport houses various subsidiary facilities, such as shopping stores, restaurants, luxury spa, bank, convenience stores, etc. Moreover, it offers a wide range of culture and arts programs as a "culture port." The Millennium Hall is the venue for performances, while Korean Cultural Street offers first-hand experience of Korea's nature and cultural heritages through state-of-the-art interactive displays. Traditional craft programs are also available free of charge.

Gimpo International Airport

Gimpo International Airport has become a leading business airport (Biz-Port) of Northeast Asia by providing excellent facilities and services. The airport was ranked 1st for 6 consecutive years in Airport Service Quality (ASQ) and offers free Wi-Fi access throughout the property. It recently expanded short-haul international routes to China and Japan for the convenience of business travelers. In 2016, it opened the Seoul Gimpo Business Aviation Center (SGBAC), a dedicated and exclusive terminal for business jets.

Subway & Railway Links to the Airport

The Airport Railroad Express (AREX) is a quick and convenient railway that connects Incheon International Airport and Seoul Station. The Korea Train Express (KTX) stations of Gyeonggi Province are in Gwangmyeong, Suwon, and Haengsin. It is a mere 15-minute ride by KTX from Gwangmyeong Station to Seoul Station. With the opening of the Super Rapid Train (SRT), the trip from Pyeongtaek Station in Gyeonggi to Suseo Station in Gangnam, Seoul takes only about 20 minutes.



Railway Links

Lines	National Link Areas	Gyeonggi Link Areas
KTIX	Chungnam, Jeonbuk, Jeonnam, Gyeongbuk, Gyeongnam	Gwangmyeong Station, Suwon Station, Haengsin Station
Gyeongbu Line, Honam Line, Jeolla Line, Janghangseon Line	Chungnam, Jeonbuk, Jeonnam, Gyeongbuk, Gyeongnam	Pyeongtaek Station ▷ Osan Station ▷ Suwon Station
Jungang Line	Gangwon, Chungbuk, Gyeongbuk	Deokso Station ▷ Yangpyeong Station
Gyeongchun Line	Gyeonggi, Gangwon	Geumgok Station ▷ Daeseong-ri Station ▷ Gapyeong Station
Gyeongwon Line	Seoul, Gyeonggi	Uijeongbu Station ▷ Dongducheon Station ▷ Yeoncheon Station
Gyeongui Line	Seoul, Gyeonggi	Haengsin Station ▷ Ilsan Station ▷ Paju Station ▷ Munsan Station
Gyowei Line	Gyeonggi	Songchu Station ▷ Samneung Station

* Railroad Customer Center: 1544-7788

Airport Limousine Bus

Incheon International Airport bus information and tickets purchases are available at the ticket offices as below:

Terminal 1: F1 Arrivals Floor, located inside (by Exits 4 and 9) and outside (by Exits 4, 6, 7, 8, 11, 13, and 9C)

Terminal 2: B1 Transportation Center

Airport Limousine Bus (Gwangmyeong)

☎ www.airportlimousine.co.kr ☎ Incheon Airport 032-743-7600 ☎ Gimpo Airport 02-2664-9898

6014 • KTX Gwangmyeong Station ⇄ Gimpo Airport ⇄ Incheon Airport

6004 • KTX Gwangmyeong Station ⇄ Incheon Airport

Gyeonggi Airport Limousine Bus

☎ http://ggairportbus.co.kr ☎ 031-382-9600

A4300 • Suwon ⇄ Gimpo Airport

- **Bus Intervals:** 15 min during commuting hours, 30 min on weekdays (Bus schedules subject to change)
- **First Stop Departure (Dongsuwon Hotel Castle) [Course 1]** First bus 05:00, Last bus 20:30 | **[Course 2]** First bus 05:05, Last bus 20:20
- **Last Stop Departure (Gimpo Airport Int'l Terminal 2F No.1) [Course 1]** First bus 07:55, Last bus 22:55
[Course 2] First bus 06:45, Last bus 22:25
- **[Course 1] Suwon ⇄ Anyang ⇄ Gimpo Airport**
Dongsuwon (Hotel Castle) – Buksuwon (Hanil Town) – Uiwang (Gocheon) – Hogle Intersection (Traditional Market)
– Anyang (Beomgye) – Gimpo Airport
- **[Course 2] Suwon ⇄ Suwon Station ⇄ Seosuwon Terminal ⇄ Gimpo Airport**
Dongsuwon (Hotel Castle) – Suwon Station – Seosuwon Terminal – Gimpo Airport

A4000 • Suwon ⇄ Incheon International Airport

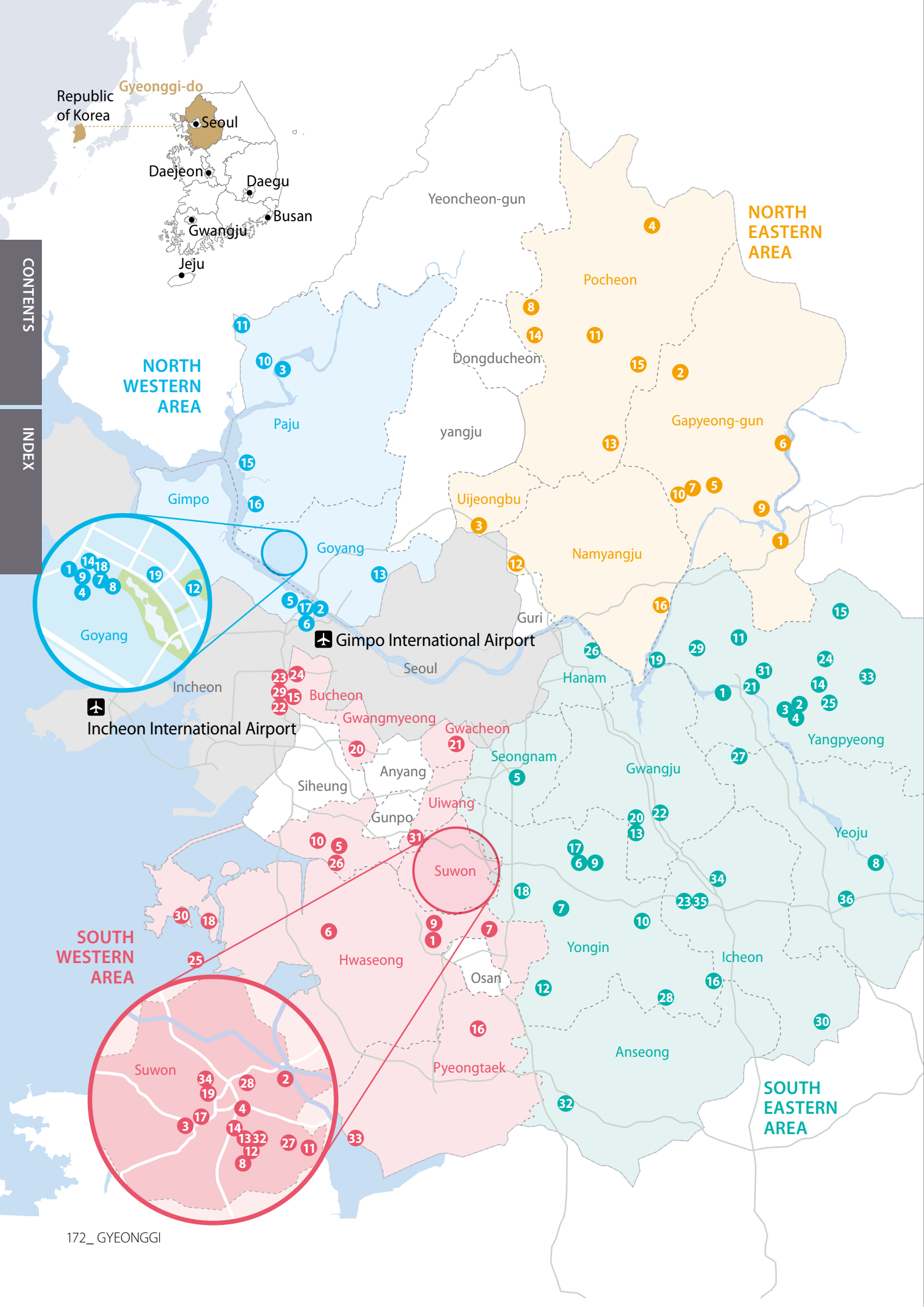
- **Bus Intervals:** 15 min during commuting hours, 25 min on weekdays (Bus schedules subject to change)
- **First Stop Departure (Dongsuwon Hotel Castle)** First bus 04:40, Last bus 20:30
- **Last Stop Departure (Incheon Airport Terminal 1, 1F Arrivals Floor, No. 8A)** First bus 05:50, Last bus 23:20
(Incheon Airport Terminal 2, B1 Transportation Center, No. 36) First bus 05:30, Last bus 23:00
- **[Course] Dongsuwon ⇄ Incheon Int'l Airport**
- Dongsuwon (Hotel Castle) – Buksuwon (Hanil Town) – Incheon Airport

A4100 • Yeongtong in Suwon ⇄ Incheon International Airport

- **Bus Intervals:** 20 min during commuting hours, 30-40 min on weekdays (Bus schedules subject to change)
- **First Stop Departure (Yeongtong Landmark Hotel) [Course 1]** First bus 05:05, Last bus 20:00 | **[Course 2]** First bus 05:00, Last bus 19:40
- **Last Stop Departure**
(Incheon Airport Terminal 1, 1F Arrivals Floor, No. 8A) [Course 1] First bus 07:10, Last bus 23:05 | **[Course 2]** First bus 08:05, Last bus 22:20
(Incheon Airport Terminal 2, B1 Transportation Center No. 36) [Course 1] First bus 06:50, Last bus 22:45 | **[Course 2]** First bus 07:45, Last bus 22:00
- **[Course 1] Yeongtong ⇄ Incheon International Airport**
Yeongtong (Landmark Hotel) – Suwon Terminal – Suwon Station – Seosuwon Terminal – Incheon Airport
- **[Course 2] Yeongtong ⇄ Homaesil ⇄ Seosuwon Terminal ⇄ Incheon Airport**
Yeongtong (Landmark Hotel) – Homaesil Library – Seosuwon Terminal – Incheon Airport

A4200 • Sanbon ⇄ Incheon International Airport

- **Bus Intervals:** 20 min during commuting hours, 30 min on weekdays (Bus schedules subject to change)
- **First Stop Departure (Sanbon in Gunpo)** First bus 04:50, Last bus 20:45
- **Last Stop Departure**
(Incheon Airport Terminal 1, 1F Arrivals Floor, No. 8A) First bus 06:20, Last bus 23:20
(Incheon Airport Terminal 2, B1 Transportation Center, No. 37) [Course 1] First bus 06:00, Last bus 23:00 | **[Course 2]** First bus 07:45, Last bus 22:00
- **[Course] Gunpo (Sanbon) ⇄ Anyang (Beomgye) ⇄ Incheon Int'l Airport**
Gunpo (Sanbon) – Anyang (Beomgye) – Anyang Station – Incheon Airport



NORTH WESTERN AREA

1 KINTEX	018	11 Panmunjeom	035
2 Ara Marina Convention	022	12 Aram Nuri	036
3 DMZ Ecotourism Information Center	024	13 Korean Traditional Stone Pot Bibimbap Cultural Experience Hall	036
4 The MVL Hotel Goyang	026	14 Hyundai Department Store – KINTEX Branch	037
5 Hotel L'art	028	15 Paju Premium Outlets, a Shinsegae Simon Center	037
6 Hyundai Cruise	030	16 Lotte Premium Outlet - Paju Branch	038
7 Onemount	032	17 Hyundai Premium Outlet Gimpo	038
8 Aqua Planet Ilsan	033	18 Lakins Mall	039
9 Hyundai Motor Studio Goyang	034	19 Western Dom	039
10 Camp Greaves DMZ Experience Center	035		

NORTH EASTERN AREA

1 CheongShim Peace World Center	042	9 Petite France	059
2 Good Morning HRD Center	046	10 The Garden of Morning Calm	060
3 Island Castle Hotel&Resort	048	11 Pocheon Art Valley	061
4 Hanwha Resorts Sanjeong Lake Annecy	050	12 Sandulsori Botanical Garden	061
5 Kensington Resort	052	13 Bears Town Resort	062
6 W Jiwoo Resort	054	14 Amazing Park	062
7 Chi-ong Art Center	056	15 Sansawon	063
8 Herb Island	058	16 Namyangju Organic Theme Park	063

SOUTH WESTERN AREA

1 SINTEX	066	18 Gyeonggi-do Youth Center	102
2 Suwon Convention Center	070	19 Suwon Hwaseong Fortress	104
3 Novotel Ambassador Suwon	072	20 Gwangmyeong Cave	105
4 Ramada Plaza Suwon	074	21 Seoul Land	106
5 Royal Heritage Hotel	076	22 Woongjin Playdoci	107
6 Rolling Hills Hotel	078	23 Aiins World	108
7 Shilla Stay Dongtan	080	24 Bucheon Robo Park	108
8 Ibis Ambassador Suwon	082	25 Jebudo Island	109
9 Hotel Prumir	084	26 Ansan Reed Marsh Park	109
10 Hotel Square	086	27 Samsung Innovation Museum	110
11 Landmark Hotel	088	28 Gyeonggi-Do Suwon Worldcup Stadium Foundation	110
12 Value Hotel Suwon	090	29 Korea Manhwa Museum	111
13 Hotel Vella Suite	092	30 Glass Island	111
14 Suwon Silkroad Hotel	094	31 Uiwang Rail Bike	112
15 The Koryo Hotel	096	32 Gyeonggi Arts Center	112
16 Ramada Pyeongtaek Hotel	098	33 Pyeongtaek Gyodong Ferry Co. Ltd.	113
17 La Vie D'or Resort	100	34 Suwon Traditional Culture Center	113

SOUTH EASTERN AREA

1 The Bloomvista	116	19 Semiwon Garden	152
2 Daemyung Resort Yangpyeong	120	20 Hwadamsup	153
3 Cherville Paradise Institute	122	21 Wild Flower Arboretum	154
4 Adela Hanok	124	22 Gonjam Ceramic Park	155
5 Courtyard by Marriott Seoul Pangyo	126	23 Starlight Garden Ooozooo	156
6 The soom Forest	128	24 Retro Museum Yangpyeong	156
7 Yongin Central CO'OP Hotel	130	25 Yangpyeong Rail Bike	157
8 Namhangang Sunvalley Hotel	132	26 Starfield Hanam Sports Monster	157
9 Ramada Yongin Hotel	134	27 Yeoju Challenge Adventure	158
10 Yangji Pine Resort	136	28 Yongin Daejanggeum Park	158
11 Hanwha Resort Yangpyeong	138	29 Dumehyanggi	159
12 Hanwha Resort Yongin Besançon	140	30 Icheon Pig Museum	159
13 Konjam Resort & Ski Course	142	31 Yangpyeong The Greem	160
14 Ocher Village	144	32 Anseong Farmland	160
15 Yangpyeong Forest Pension	146	33 Sumi Village	161
16 Sunning Leadership Center	148	34 Chicken University	161
17 Everland Themepark	150	35 Icheon Lotte Premium Outlet	162
18 Korean Folk Village	151	36 Yeoju Premium Outlets	162

**Gyeonggi MICE Bureau
is the best partner for
Successful MICE**



**GYEONGGI TOURISM
ORGANIZATION**

Published Date November, 2018

Published by Gyeonggi Tourism Organization / Gyeonggi MICE Bureau

① 5Fl., 1150, Gyeongsu-daero, Jangam-gu, Suwon-si, Gyeonggi-do 16207, Korea

☎ +82-31-259-4786 📠 +82-31-259-4780 ✉ gmice@gto.or.kr 🌐 www.gmice.or.kr

Designed by Hodgepodge