

The 10th Route is extended from Jangnam Bridge to Sunguijeonji Royal Palace. Horogoru Castle, dolmen at Hakgok-ri, and Sunguijeonji Royal Palace built over Jusangjeolli Cliff add the ecological value.

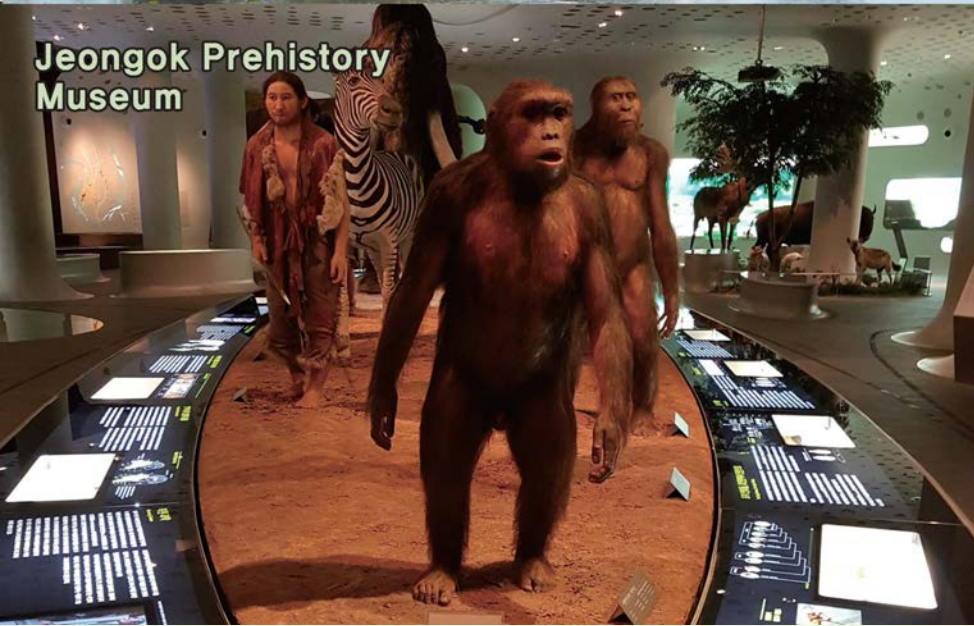
The sand hill of Imjingang River and the red cliff, sand beach of Imjingang River near Biryong Bridge, seen from Horogoru Castle, are water birds' paradise in the winter.

A colony of Amur maples and common reed, Samicheon Stream flowing down from the DMZ are the repository of aquatic organisms. You can also enjoy the beauty of spring flowers at Sunguijeonji Royal Palace.

Horogoru Castle



Jeongok Prehistory Museum



Jeongok Prehistory Museum You can easily understand the culture of the Old Stone Age at Jeongok-ri, Korea, and around the world. It exhibits valuable materials for the public and experts.

Yeoncheon Jeongok-ri Paleolithic Festival, ruins of Jeongok-ri Yeoncheon has one of the Korean peninsula's representative prehistoric remains. In the Jeongok-ri ruins site, the Paleolithic Festival, a representative cultural event of Yeoncheon takes place every May. In the Prehistory Experience Village, you can experience the primitive life.

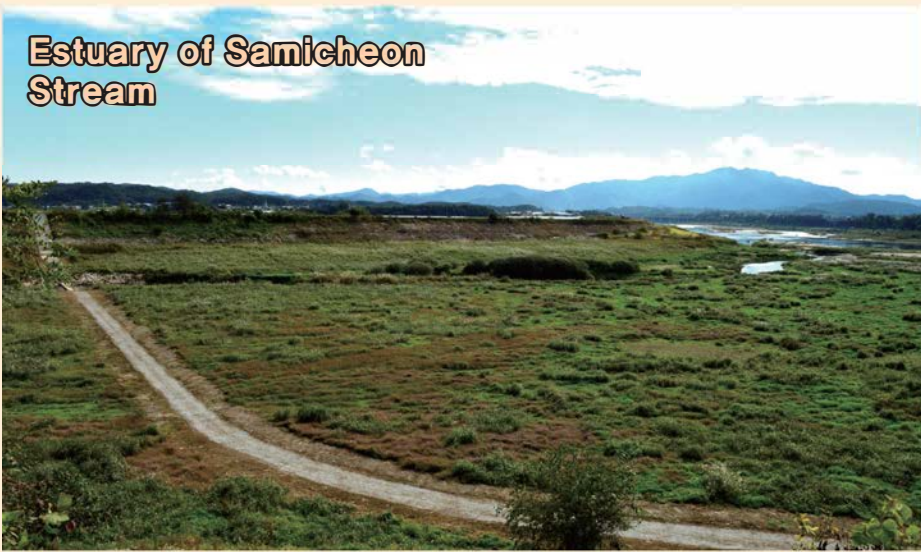
Jaein Falls Korea's first geological park formed around a river. It offers excellent natural views including Jusangjeolli Cliff. It is the most beautiful waterfall at Hantangang River. A park is established along the area.



Jaein Falls



Estuary of Samicheon Stream



10th Route

Imjingang River, a route for goods between Hansung and Gaesong

● Jangnam Bridge (Wondang-ri) → Sungui Royal Palace | 4.5 hours 16km

Royal Tomb of King Gyeongsun



Panorama of Dongi-ri



Dangposeong Castle



Dongi-ri Red Cliff



11th Route

Beautiful scenery of red autumn leaves along the 2.5km-long Jusangjeolli Cliff of Imjingang River.

● Sunguijeonji Royal Palace → Gunnam Flood Control Reservoir | 5 hours and 20 minutes 18km

Dangposeong Castle and Goguryeo Boruseong Castle—historical remains of the Goguryeo Dynasty, are geologically important sites. Jusangjeolli Cliff at Dongi-ri reflected in Imjingang River is truly a piece of work.

Cranes Theme Park located in Gunnam Flood Control Reservoir offers a glimpse of the wintering pond. The wide wetland in front of the reservoir is also beautiful.

Gyeonggi Province Pyenghwa-Nuri Trail (Yeoncheon)



Ecology where human beings and nature co-exist



Ongnyeobong Peak



Spring of Mangkoksan Mountain



Bingae yeowl Rapids



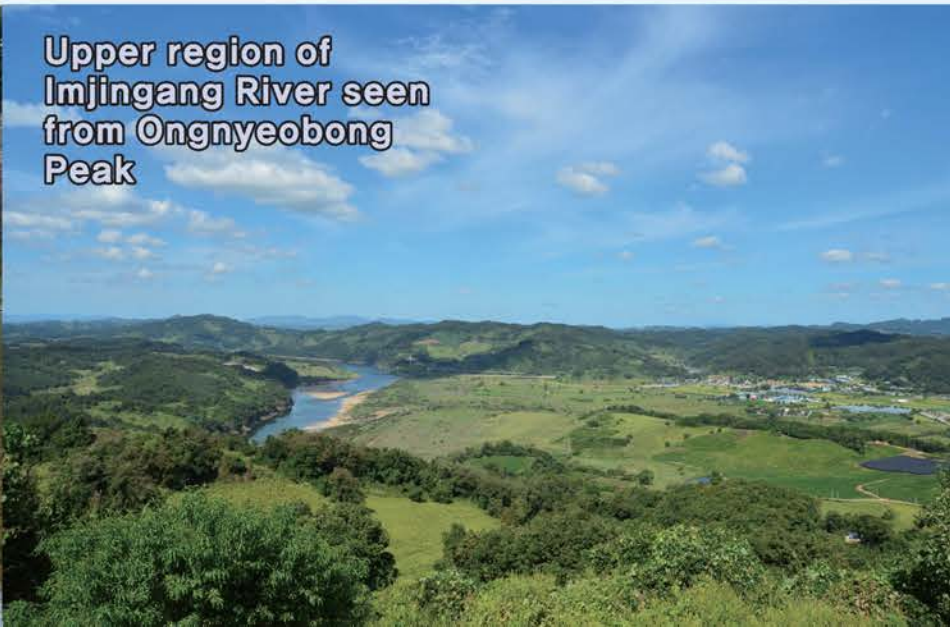
12th Route

Running by the DMZ and the CCZ, the route delivers a hope of reunification along the Gyeongwon Line to the north.

● Gunnam Flood Control Reservoir → Inverse Icicle Road | 7.5 hours 28km

The 12th Course leads from Gunnam Flood Control Reservoir to Inverse Icicle Road. It is running alongside the wintering pond

Upper region of Imjingang River seen from Ongnyeobong Peak



Pyenghwa-Nuri Trail

189km from Ganghwado, Gyeonggi Province, and Mt. Haengjusanseong Fortress to Sintan-ri. From the 1st Route to 12th Route, all routes are connected. In Yeoncheon-gun, 10, 11, and 12th Routes are established. The routes along the ceasefire line are filled with the hope of a peaceful reunification of the Korean peninsula. In the middle of beautiful scenery of primitive nature, a variety of animals and plants are living together.

●Yeoncheon-gun, Gyeonggi Province

The northernmost city of Gyeonggi Province. Surrounded by Paju-si and Pocheon-si. It is bordered with Hwanghae Province in North Korea, north of the 38th parallel line. In the central region of the Korean peninsula, it played a pivotal role in the political and geological sense, from the prehistoric time to ancient one. It is 50 minutes away from Seoul. It includes the DMZ, a repository of natural ecosystem that preserves the primitive nature of the Korean peninsula.



Upper region of Chatancheon Stream



Inverse icicle



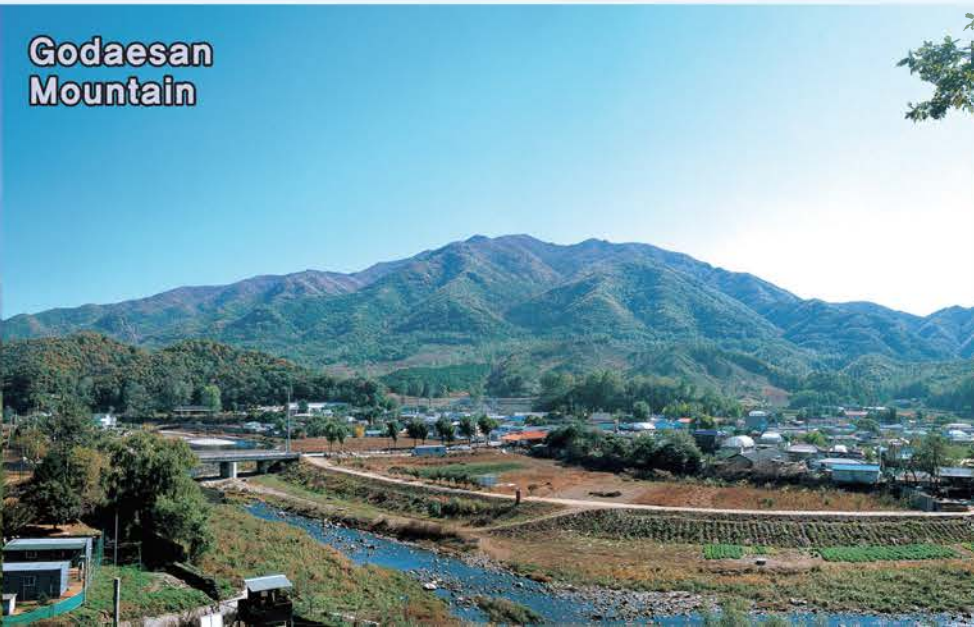
of cranes, in the closest to the DMZ and the CCZ.

Reed marsh of Chatancheon Stream is all around Sintan-ri Station, a historically meaningful venue, and it climbs up Godaesan Mountain. A group dance by cranes flying over the adlay field at Ongnyeobong Peak connected to Yeongang Narutkkil, gives a beauty of heaven. In the inverse icicle region, the mystery of giant inverse icicles meet the forest of primitive era.

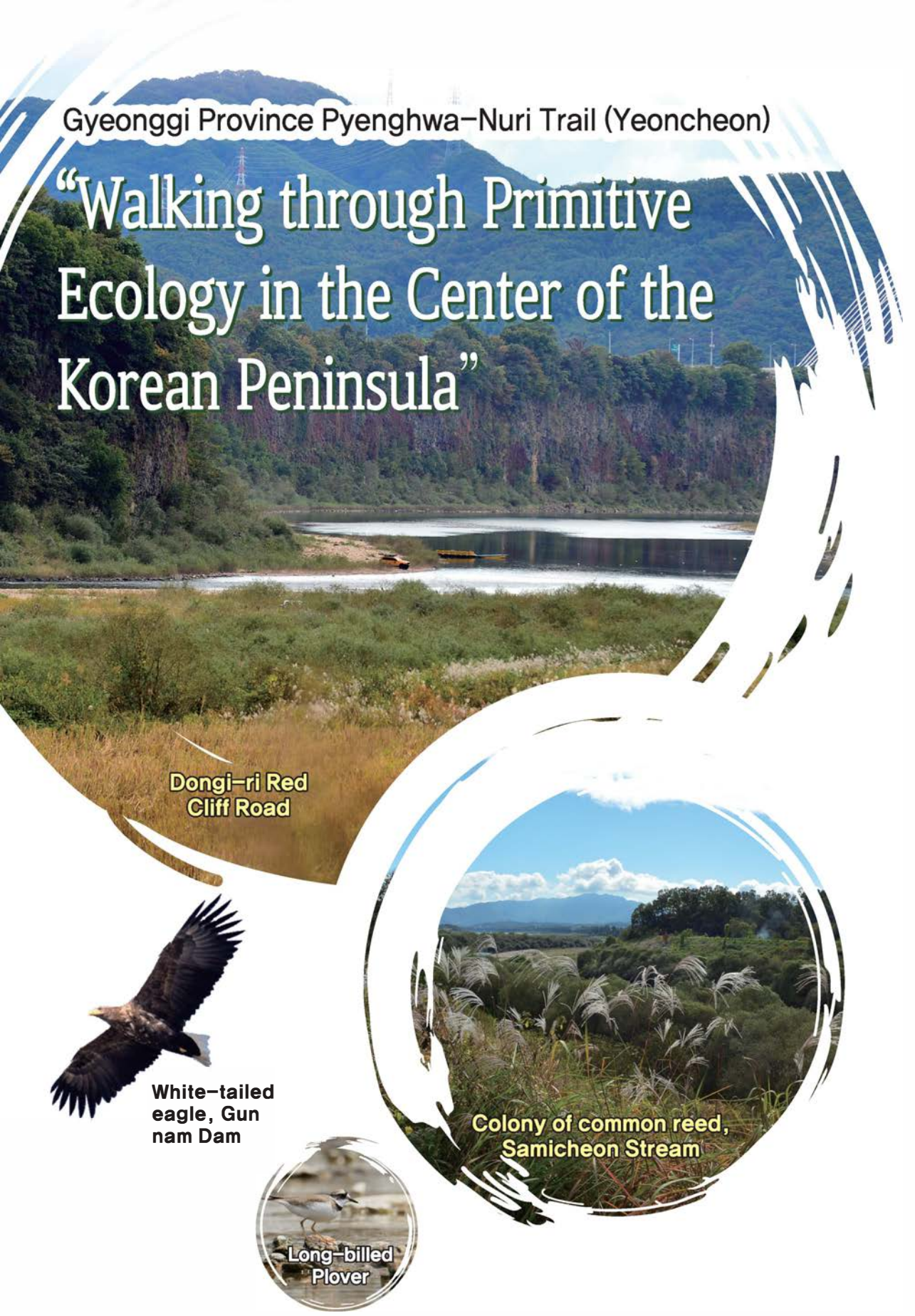
Gaehanmaru



Godaesan Mountain



“Walking through Primitive Ecology in the Center of the Korean Peninsula”



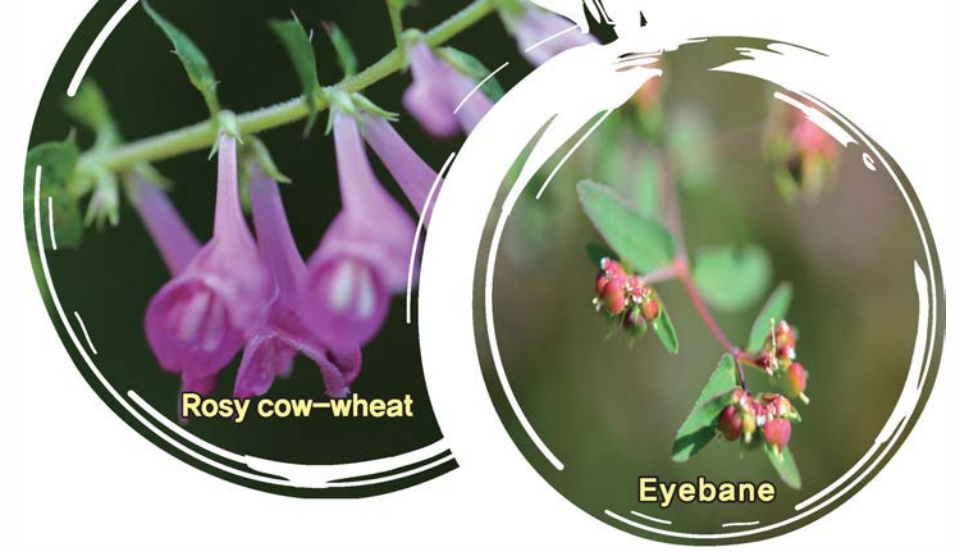
Dongi-ri Red Cliff Road

Colony of common reed, Samicheon Stream

White-tailed eagle, Gun nam Dam

Long-billed Plover

Unusual birds appearing At Yeoncheon Pyenghwa-Nuri Trail



Unusual birds
Extinction 39, Natural 50, Red List 64

Plant species category
Wild species 457
Naturalized species 53
Cultivated species 31

Tongil-ieumgil 12



Unusual birds
Extinction 19, Natural 20, Red List 27

Plant species category
Wild species 450, Naturalized specie 53
Cultivated species 23

Imjin Red Cliff Road 11



Unusual birds
Extinction 36, Natural 42, Red List 49

Plant species category
Wild species 322, Naturalized specie 53
Cultivated species 23

Gorangpo-gil 10

